



Your Touchstone Energy®  
Cooperative

"We Care"

4230 Hatwai Road • PO Box 997  
Lewiston, ID 83501  
(888) 743-1501  
(888) 798-5280 (Propane)  
www.clearwaterpower.com

**Board of Directors:**

Alan Lansing, Lenore, Idaho  
*President*  
Kenneth Weiss, Asotin, Washington  
*Vice-President*  
M.M. Harris, Saint Maries, Idaho  
*Secretary-Treasurer*  
Robert Callison, Kendrick, Idaho  
*Assistant Secretary-Treasurer*  
Thomas Hutchinson, Craigmont, Idaho  
Pamela Anderson, Potlatch, Idaho  
Richard E. Butler, Culesac, Idaho

**Management & Staff**

K. David Hagen  
*General Manager*  
Edwin Ausman  
*Director of Purchasing and Warehousing*  
Lisa Hall  
*Manager of Financial and Office Services*  
Lorrie McCabe  
*Director of Member Services*  
Douglas Pfaff  
*Manager of Engineering*  
Robert Pierce  
*Manager of Member Services*  
Scott Seegmiller  
*Manager of Information Systems*  
Cynthia Tarola  
*Director of Accounting*  
Stanley Vannoy  
*Manager of Operations*

**Business Hours:**

Monday - Thursday  
7:00 a.m. - 5:30 p.m.  
Closed Fridays

This institution is an equal opportunity provider and employer. If you wish to file a Civil Rights program complaint of discrimination, complete the USDA Program Discrimination Complaint Form, found online at [www.ascr.usda.gov/complaint\\_filing\\_cust.html](http://www.ascr.usda.gov/complaint_filing_cust.html), or at any USDA office, or call (866) 632-9992 to request the form. You may also write a letter containing all of the information requested in the form. Send your completed complaint form or letter to us by mail at U.S. Department of Agriculture, Director, Office of Adjudication, 1400 Independence Avenue, S.W., Washington, D.C. 20250-9410, by fax (202) 690-7442 or email at [program.intake@usda.gov](mailto:program.intake@usda.gov)

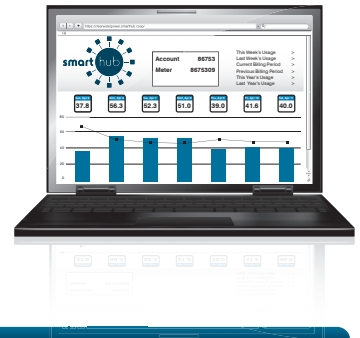
ID-1

# THREE WAYS TO MANAGE YOUR BILL EASY AS:

## 1 E-BILL (SmartHub)

E-Bill is faster than mailing a Check and our web site provides much more information than a paper bill.

Sign up at: [clearwaterpower.smarthub.coop](http://clearwaterpower.smarthub.coop)



## 2 AUTO-PAY

Automatically pay the exact amount due on the 5th or 20th each month. Use your: Credit Card, Debit Card or Checking Account

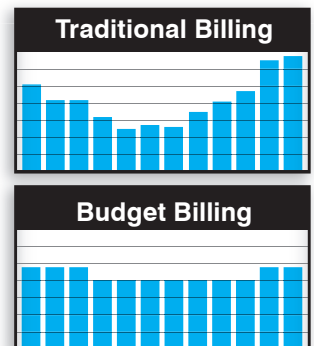
Sign up by calling: 1-888-743-1501



## 3 BUDGET BILLING

Budget billing smooths out your payments using your 12-month average. Your payments may decrease or increase in increments of \$10 each month.

Sign up by calling: 1-888-743-1501





171 Linden Way  
 P.O. Box 398  
 Heppner, OR 97836  
 (541) 676-9146

www.cbec.cc  
 info@cbec.cc

**Board of Directors**

**President**

Lori Anderson, Condon

**Vice President**

John Qualls, Heppner

**Secretary/Treasurer**

Roy Carlson, Fossil

Gary Wilde, Olex

Dan Lindsay, Lexington

Gerry Arnson, Heppner

Deacon Heideman, Lone

**Manager**

Thomas Wolff, Heppner

Columbia Basin Electric Cooperative's main objective is to provide reliable electric service to its members at the lowest cost consistent with good business practice.

OR-2



# Watch for Back-to-School Kids

## Drivers should take precautions around schoolchildren.

On average, 26 children in the United States are killed every year while getting on or off a school bus, or while waiting at the bus stop. To avoid such tragedies, drivers are reminded to:

- Carefully back out of driveways. Watch for children walking to the bus stop.
- Slow down. Watch for children walking in the street and playing or congregating near bus stops—especially in the early morning hours, when it may still be dark.
- Be alert. Children arriving late for the bus may dart into the street without looking.
- Obey the law. Yellow flashing lights on a bus mean motorists should slow down and prepare to stop. Red flashing lights mean motorists must stop their cars and wait until the red lights stop flashing, the extended stop sign is withdrawn and the bus starts moving again. Unless there is a median, oncoming traffic also must stop.

# NORTHERN WASCO COUNTY PUD

2345 River Road  
The Dalles, OR 97058  
(541) 296-2226 FAX 298-3320  
www.nwasco.com

## Board of Directors

Dan Williams, President  
Clay Smith, Vice President  
Howard Gonser, Secretary  
Barbara Nagle, Treasurer  
Ken Leibham, Director

## Manager

Dwight D. Langer

## Board Meetings

Usually the fourth Tuesday of the month at 6 p.m. at the PUD offices, 2345 River Rd. The public is always welcome.

## Our Mission

To provide reliable, competitively-priced energy and related services that benefit our customers, in the tradition of public power.

## Our Core Values and Beliefs

Local citizens championed and fought to create our People's Utility District. They believed—and we believe—in the public's right to own and control its electric utility.

Today, our values are a legacy from our public power heritage, as well as guideposts for a changing future.

We believe in:

- ▶ Public ownership and local control.
- ▶ Integrity.
- ▶ Keeping power rates as low as possible.
- ▶ Providing quality essential services.
- ▶ Quality customer service.
- ▶ Community involvement.

OR-3

## Manager's Report



Dear Customers—Our Friends and Our Neighbors,

September is here – one of the 12 great months of the year. September's weather is usually top-shelf and, with luck, we'll be blessed again with many near-perfect weather days.

Our students are back to school, and many spouses will become seasonal widows or widowers with the start of the NCAA football season and the pro football season in close pursuit. Go Ducks and Beavs! And Cougs, and Huskies, and Screamin Eagles, and (add your favorite here)!

In the July edition of Ruralite we were happy to announce to you that the board of directors authorized retiring early the remaining revenue bond obligations of the District. For the time being, your PUD is debt-free. That is obviously a good state of affairs in which to find an individual or an organization. Then we were curious as to how many years it had been since the District last had no outstanding bond obligations. This might be a good trivia question or bet to see who could guess the closest. What's your guess? (Hint: ask your great-grandpa or great-grandma.)

Here is what we found: The District's first audit was dated March 2, 1943, and was submitted to Oregon Secretary of State, Robert S. Farrell. From another audit, for the period of July 1, 1947 to June 30, 1948, we found the following statement, "At an election held November 5, 1940, the voters of the district authorized the issue of bonds in the amount of \$475,000. As of June 30, 1948 no bonds had been issued under this authorization. As of September 13, 1948, the Board of Directors sold \$225,000 electric revenue bonds dated July 1, 1948, and carrying interest at the rate of four per cent per annum".

In checking financial audits from then to the present, we found that the District would continue to have outstanding bond obligations continually from September 1948 until this past July 2015 — a total of 67 years! So if you guessed 67 years, or even close — you are a winner indeed.

In this instance, we hope all PUD customers feel we are all winners! Until next time, have a great day.

**Dwight Langer**  
General Manager



P.O. Box 31 • 1009 F St.  
Nespelem, WA 99155  
8 a.m. to 4:30 p.m. (M-F)  
Phone: (509) 634-4571  
Fax: (509) 634-8138  
email: [nvec@nvec.org](mailto:nvec@nvec.org)  
website: [www.nvec.org](http://www.nvec.org)

For after-hours emergencies,  
call 634-4571 to page  
an on-duty employee.

## Board of Trustees

### President

Ralph Rise  
*District 2, Elmer City*

### Vice President

Chuck Goldmark  
*District 9, Okanogan*

### Secretary/Treasurer

Monte Joseph  
*District 5, Nespelem*

Cindy Corpe  
*District 1, Coulee Dam*

Brad Dudley  
*District 3, Belvedere*

Dorothy Palmer  
*District 4, Nespelem*

Patrick Morin Jr.  
*District 6, Nespelem*

Gilbert Desautel Jr.  
*District 7, Disautel*

Albert Preugschat  
*District 8, Bridgeport*

Board meetings are the fourth  
Tuesday of every month.

WA-5

# NVEC's 76th Annual Meeting

*Get an update on your co-op and meet the new GM*

## Dear Members,

Nespelem Valley Electric Cooperative Inc.'s Annual Meeting is Friday, October 2, 2015. Registration is from 5 to 6:45 p.m. Attendance at this meeting gives the member-owners an opportunity to participate in cooperative business as well as enjoy a great meal and socialize with fellow members.

Trustees will be elected and there will be prize drawings throughout the meeting.

Inside this edition of Ruralite, you will find the agenda for the annual meeting. The list of nominees for the open trustee positions will be on our web page, [www.nvec.org](http://www.nvec.org), as soon as the nominating committee meets.

Your registration card is also inside the magazine. Please bring the card with you to the annual meeting.

The NVEC Board of Trustees is pleased to announce the hiring of General Manager Dan Simpson. Dan comes to us from Okanogan PUD and is an electrical engineer with his professional engineer license. His first day will be September 8.

The annual meeting will be a great opportunity to meet Dan.

Merger discussions with Inland Power and Light have come to an end. Attorneys for the cooperatives found language in the Washington state's administrative codes—the Revised Code of Washington—that had the potential to put both cooperatives at substantial financial risk. Neither board was willing to expose their members to that risk. This will be discussed at the annual meeting.

Your Board of Trustees look forward to seeing you October 2.

Sincerely,

**Ralph Rise**  
**Board President**



CONSUMERS POWER INC.

**MAILING ADDRESS**

**P.O. Box 1180  
Philomath, OR 97370  
(541) 929-3124  
(800) 872-9036**

**LOCAL OFFICES**

**6990 West Hills Road  
Philomath, OR 97370**

**1900 W Oak St.  
Lebanon, OR 97355**

**Russ Sapp**  
CHAIRMAN

**Thad Springer**  
VICE CHAIRMAN

**Terry Plagmann**  
SECRETARY

**Kevin Christopher**  
ASSISTANT SECRETARY

**Roman Gillen**  
PRESIDENT/CEO

**Tony Wilson**  
TREASURER/CFO

**www.cpi.coop**

**School is back in session. Watch out for children while you drive.**

OR-6

## President's Report

The Bonneville Power Administration issued its final Record of Decision on wholesale power rates that will take effect on October 1, and run through September 30, 2017. In late July, BPA announced its power rates will increase 7.1 percent on average and transmission rates will increase an average of 4.4 percent.

The increase in power rates is primarily due to the expiration of debt management actions that reduced capital costs during the current rate period. In addition, Power Services is seeing higher expenses for hydroelectric system operations and maintenance. Another driver of this increase is the higher level of benefits paid to investor-owned utilities under the terms of the Residential Exchange Program settlement which increases by \$18 million annually.

On the transmission side, the increase is attributed to the need for new construction and replacement of existing assets/infrastructure that will help maintain reliability. In addition, the costs of requirements for reliability, cybersecurity compliance and the integration of renewable resources are also a contributing factor.

With this information, CPI will analyze the impact of these changes. We plan to announce their effect on CPI members at the annual meeting on September 12.

### Fish Returns

Record heat did not stop summer chinook and sockeye from returning to the Columbia River in record numbers. The summer chinook run of 115,000 fish was the largest since 1960. Sockeye numbers tallied 509,000 making it the third-largest run in modern times.

Unfortunately, this year's strong fish returns are encountering higher than normal water

temperatures due to record high temperatures and low water levels. These high temperatures are causing extreme fish mortality rates.

Also of concern is that the excellent ocean conditions that have impacted these returns in recent years appear to be changing for the worse. While the region continues making positive impacts on fish habitat and fish survival rates while in the river, ocean conditions greatly influence fish return numbers because most of their lives are spent in the ocean.

### Legislative Update

This year's legislative session ended without major impacts to the state's electric cooperatives. Our cost of doing business and local control authority was not impacted in a significant way by any of the thousands of bills that were introduced at the beginning of the session. The efforts electric cooperatives deployed during the session were successful in maintaining the status-quo for now. Sometimes success is measured through mere survival.

### Clean Power Plan

In August, the Environmental Protection Agency unveiled the final version of the Clean Power Plan, which establishes state-by-state targets for carbon emissions reductions from power plants. The rule would reduce national electricity sector emissions by an estimated 32 percent below 2005 levels by 2030. While it appears the impacts to Oregon's consumer-owned utilities are less than in previous versions of the plan, the true costs associated with the plan will not be known for some time.

**Roman Gillen**  
President and CEO

# Benton R E A



A Touchstone Energy® Cooperative

## Benton REA

The Board meets the last Wednesday of each month at 6:00 p.m.

### Trustees:

President.....Michael Freepons  
Vice-president.....Kyle Shinn  
Secretary/Treasurer.....Mark Platt  
Trustee, District #1.....Buddy Treadway  
Trustee, District #3.....Bob Evans  
Trustee, District #5.....Tim Grow  
Trustee, District #7.....Connie Krull  
Trustee, District #8.....Catherine Russell  
Trustee, District #9.....Virgil Boyle

### Staff:

General Manager.....Clint Gerkenmeyer  
Engineering Manager.....Derek Miller  
Special Services Manager.....Mike Bradshaw  
Manager of Finance & Admin.....John Porter  
Operations Manager.....Jeff Ekrut  
I. T. Manager.....Jeff Bastow  
Member Services Manager.....Troy Berglund  
Attorney.....Terry Mundorf  
Consulting Engineer.....HDR  
Auditor.....Blodgett, Mickelsen & Naef

**Main Office**  
402 7th Street  
P.O. Box 1150  
Prosser, WA 99350  
[www.bentonrea.org](http://www.bentonrea.org)  
Phone: (509) 786-2913  
toll free (800) 221-6987  
Fax: (509) 786-0291

◆  
**Toppenish Office**  
410 South G Street  
P.O. Box 744  
Toppenish, WA 98948  
Phone: (509) 865-2600

◆  
**West Richland Office**  
6095 W. Van Giesen  
West Richland, WA 99353  
Phone: (509) 967-2921

WA-7

## Manager's Message



Dear Members:

The last couple of months, I've been discussing the upcoming rate increase that Benton REA will be implementing in response to the Bonneville Power Administration's (BPA) increased power and transmission rates.

BPA has formally announced its new increased rates that become effective next month. This increase raises our BPA wholesale power and transmission rates by 8.4 percent and 4.4 percent respectively. Taking into consideration this latest BPA increase, Benton REA's wholesale power costs will have increased by about 20% since we last increased our retail rates in March 2012.

The Benton REA Board of Trustees approved new retail rates for all rate classes with an average increase of 7.7 percent. Each Benton REA member will be receiving the new retail rate schedules for their specific account types. We will send the new retail rate schedules to every member in a special mailer in October. The new rate schedules will go into effect March 1, 2016 and will be reflected in the Benton REA bills that members receive the first week of April 2016.

As a reminder:

- Benton REA's rate increase is driven solely by increased wholesale power costs, and not the internal costs of running your cooperative. The majority of your electric bill consists of wholesale power costs—electricity that Benton REA purchases from wholesale power suppliers and delivers to its members.
- In order to minimize the impact to our members, Benton REA's Board of Trustees will not raise the retail rates this fall when BPA's increase goes into effect; but will instead delay the rate increase until spring 2016. Spring is when electrical usage is commonly less and we feel our member's won't be impacted as much by the rate increase through their electric bills during this period.
- In order to discuss the issue with our members and answer any questions, Benton REA's Board of Trustees has scheduled four area member meetings. You can find the dates and locations on page 28 of this Ruralite magazine.

We understand that rate increases are never welcome. However, having the ability to plan ahead and budget can help. I assure you we'll continue doing everything in our power to keep your rates low while still providing safe, affordable and reliable energy through your electric cooperative.

Sincerely

Clint Gerkenmeyer  
General Manager ([clintg@bentonrea.org](mailto:clintg@bentonrea.org))

## Offices

### Hermiston Office

750 W. Elm Ave.  
541 567-6414

### Boardman Office

203 E. Boardman Ave.  
541 481-2220

### Toll-Free

1-800-452-2273

### To Report An Outage

Call 888-465-5701 any  
time day or night

## Directors

### President

Jeff Wenholz

### Vice President

Bryan Wolfe

### Secretary-Treasurer

Bob MacPherson

RoseEtta Ansotegui

Lee Docken

John Otis

Glenn Rohde

### General Manager

Steve Eldrige

## Mission

Umatilla Electric Cooperative is a member-owned business that sells energy and invests in and supports other services to improve the quality of life in our communities.

[umatillaelectric.com](http://umatillaelectric.com)

OR-8

# UEC Looks Forward as BPA Rates Rise

This summer, Umatilla Electric and other Northwest consumer-owned utilities are deciding how to manage an increase in their wholesale power rates.

Bonneville Power Administration will raise its rates an average 7.1 percent for the two-year period starting Oct. 1, 2015. Because wholesale power comprises more than 60 percent of UEC's overall expenses, it is very likely that we will be increasing our rates in early 2016.

Bonneville's new rates are driven by many factors. There are cost increases for hydro system operations and maintenance, for fish and wildlife programs and the Residential Exchange Program settlement, for acquiring energy and transmission services to meet obligations to deliver power to off-system customers, and for capital-related expenses (new BPA transmission lines and substations).

I'd like to share a few factors that come into play for UEC as we review our rates.

UEC charges to its Members must be sufficient to pay for the power it buys to deliver to Members, debt service on borrowed money, meet the financial ratios required by UEC lenders, pay property and employment taxes, pay employee wages, buy poles, wires and transformers, gross revenue tax to the state of Oregon, office space, vehicles and so on as well as a small margin (5% or less of forecasted revenue) for some of the UEC operating expenses.

Of this list of financial obligations only the amount of power UEC purchases and sells to its Members varies month to month and year to year, sometimes by wide amounts. The other expenses are within UEC's control and while they may increase or decrease over the

longer term do not vary in amount month to month. A rate change which BPA instituted at the beginning of this contract (October 1, 2011) was a large monthly fixed charge. Now 50% of UEC's BPA power bill does not change with the amount of energy UEC buys.

One result of this action by BPA is to increase the fixed amounts UEC is responsible for each month independent of how much power UEC sells to Members. UEC's only source of revenue is from its Members. One rate design method an increasing number of utilities are using is to increase the monthly charge (currently \$14/month for UEC Residential Members) to more closely equal the utilities' fixed costs on a proportional basis.

UEC's bill to Members for an average sized all electric home is \$110/month. About \$44 of this \$110 average bill is for UEC's non power costs.

This cost remains whether or not any energy is used by the UEC Member. This \$44 is the cost to provide around the clock each day of the year access to electricity, in fact as much electricity as you want. We will be visiting with Members further on this rate design question in the near future.

Traditionally utilities set their basic charges low and have opted to collect most of their revenue from the kilowatt hours a Member consumes, which we call the "energy charge" on your bill.


When Members install their own electrical generation, such as solar panels, their purchases from UEC will probably be reduced, which reduces UEC revenues, while the cost to provide access to electricity is not reduced. If much Member owned generation is installed UEC will have to increase its charges to regain the revenues required for healthy, reliable operations.



Steve Eldrige

*Continued on Page 25*



A Touchstone Energy® Cooperative 

**105 E. 4th St.  
The Dalles, OR 97058  
Office phone: (541) 296-2740  
Toll-free phone: (800) 341-8580  
www.wascoelectric.com**

**Office Hours:**

Monday - Thursday,  
7:30 a.m. to 5:30 p.m.  
Friday, 8 a.m. to 5 p.m.

**Board of Directors**

- Ron Holmes ..... President
- Michael Collins ..... Vice President
- Jim McNamee ..... Secretary
- H. Kelly McGreer ..... Treasurer
- Gary Brown ..... Director
- Robert Durham ..... Director
- Robert "Bob" Hammel ..... Director
- Mathew Clausen ..... Director
- DeOra Patton ..... Director

**Staff**

- Jeff Davis ..... General Manager
- Marie Wilson .... Executive Admin. Assistant
- Shannon Bessette ..... Finance Manager
- Jim Green ..... Engineering Technician
- Brewster Whitmire ..... E&O Assistant
- Traci Brock... Marketing & Member Services
- Laura Correia ..... Customer Service Rep.
- Jennifer Lindsey .... Customer Service Rep.
- Casey McCleary ..... Operations Manager
- Michael North ..... The Dalles Foreman
- Robert Gridley ..... The Dalles Lineman
- Wesley Woods ..... Serviceman
- Dan Funkhouser ..... Grass Valley Foreman
- Frank Roeder ..... Maupin Foreman

**Mission Statement**

*"Wasco Electric Cooperative Inc. will provide its members with competitively priced, reliable energy and related services."*

OR-9

# Manager's Message

## Power Rate Increase

In late July, the Bonneville Power Administration announced a regionwide average 7.1 percent increase in wholesale power rates and a 4.4 percent increase in transmission rates, effective October 1, 2015.

The increase in wholesale rates stems from higher costs to operate and maintain the aging hydro system, higher long-term fish and wildlife costs, upgrades to an aging transmission system and reduced revenues from surplus power sales due to lower market prices for energy.

The Wasco Electric Cooperative management and board are determining the additional revenue requirements needed to cover the increased cost of power, as well as the cost to continue maintaining its own infrastructure serving the membership. This month, we will announce the final rate impact to the membership and when the increase will take place, likely as early as October 1.

We recognize a rate increase will be a challenge for many of our members. I assure you we are working diligently to keep the increase as low as possible, yet maintain system reliability and the financial health of your cooperative.

Increasing costs make energy efficiency more important than ever, and we will continue to encourage our members to take advantage of our energy-saving incentive programs. The smarter we are about our energy use now, the less power we will need in the future.

## WECare Donations

Each year, the cooperative reaches out to its members asking for support of those less fortunate who struggle to make financial ends meet. Your contributions to our WECare program help many families each year. We are asking for your support again this month.

With your September power bill is a donation card with which you can help support your friends and neighbors. Please see page 8 of this month's issue for more information on the benefits of this program.

As always, if you have any questions or concerns about your cooperative, please call or stop by the office.



**Jeff Davis**  
**General Manager**

# Owned By Those We Serve

Douglas Electric Cooperative Inc.,  
Roseburg, Oregon  
Phone (541) 673-6616  
(800) 233-2733

## Officers

President . . . . . Terry Nelson  
Vice President . . . Robert Poage  
Secretary . . . . . Shirley Cairns  
Treasurer . . . . . Dick McHaffie  
Director . . . . . Larry Shipley  
Director . . . . . Evan Barnes  
Director . . . . . Carey Weatherly

## General Manager

Cameron Frasnelly  
(541) 430-7676

## Superintendent

Todd Sherwood  
(541) 580-7205

## Office Manager

Paul Leonard

## Member Services

Todd C. Munsey

## Douglas Fastnet

Todd Way

## Mission Statement

The mission of Douglas Electric Cooperative, a member-owned and operated cooperative, is to provide affordable, reliable electric and other compatible services that enhance the quality of life for its members, using progressive marketing in conjunction with sound financial and management principles.

**DOUGLAS**  
ELECTRIC COOPERATIVE

A Touchstone Energy® Cooperative 

OR-10

## Why The “Basic Charge” Is Necessary

Dear Members,

When you receive your bill each month, you’ll notice there is a ‘basic charge’ as well as a charge for energy usage. The basic charge is an attempt to recover fixed costs incurred by your cooperative. Examples are insurance, payroll, equipment, poles, tree trimming and routine maintenance of the system.

Although the basic charge is often misunderstood, it is an attempt to recover costs not recovered through electrical usage, in a way that is fair and equitable to all members. We are not unlike other utilities in that we need to recover fixed costs, regardless of the amount of product consumed.

Determining the appropriate amount to charge members is definitely a balancing act. We know how much revenue to expect with a basic charge, but the amount of revenue from energy consumed varies in large part because of the weather. A mild winter, such as the most recent one, means less revenue. Keep in mind, as a not-for-profit cooperative, we buy and sell power to our members at cost, and that cost must be recovered again, in a way that is fair and equitable to all members.

A recent cost-of-service analysis determined that Douglas Electric basic charges do not reflect the true cost of providing service. In fact, the actual cost of delivering service to your location is much higher. That’s where the balancing act comes in. Again, this means that part of the fixed costs are recovered in the energy usage charge. Usage fluctuation makes it difficult to recover the actual expenses in maintaining our distribution system.

Douglas Electric is currently going through a process to analyze the basic and usage charges associated with each rate class, such as residential, commercial and industrial. There will likely be an adjustment in October.

No one wants to increase rates, but costs to maintain our system are constantly increasing. Please be assured that your board and management will be looking at these charges closely and as always, doing our best to keep them as low as possible.

If you have any questions, feel free to contact Douglas Electric for further explanation.

Best Regards,



Cameron Frasnelly  
General Manager



### • RATE INCREASE •

This is just a reminder that we will be looking at a cost-of-power rate increase beginning with your October statement. (September’s usage) The percentage will be low, but the exact amount is yet to be determined by Bonneville Power Administration.

# Columbia Power Co-op



P.O. Box 97  
Monument, OR 97864  
(541) 934-2311  
Toll free (888) 203-7638

## DIRECTORS

President Paul Walton  
Vice President Adam Temple  
Sec./Treasurer Tom Campbell  
Dan Cannon  
Dave Humphreys  
Cheryl Jenison  
LaReta Jones

## MANAGER

Troy Cox

The board of directors meets  
the second Monday of each month.

## POWER OUTAGE NUMBERS

Co-op office ..... 934-2311  
Ed Andersen ..... 934-2255  
Guy Andersen ..... 934-2098  
Troy Cox ..... 934-2155  
Josh Hamilton ..... 934-2133  
Mike Osborne ..... 934-2067  
Joe Ringering ..... 934-2198  
Gary Warner ..... 934-2961  
Brian Woodell ..... 934-2260

OR-11



## Watch for Back-to-School Kids

**Drivers should take precautions around schoolchildren.**

On average, 26 children in the United States are killed every year while getting on or off a school bus, or while waiting at the bus stop. To avoid such tragedies, drivers are reminded to:

- Carefully back out of driveways. Watch for children walking to the bus stop.
- Slow down. Watch for children walking in the street and playing or congregating near bus stops—especially in the early morning hours, when it may still be dark.
- Be alert. Children arriving late for the bus may dart into the street without looking.
- Obey the law. Yellow flashing lights on a bus mean motorists should slow down and prepare to stop. Red flashing lights mean motorists must stop their cars and wait until the red lights stop flashing, the extended stop sign is withdrawn and the bus starts moving again. Unless there is a median, oncoming traffic also must stop.

# Central Issues

## Central Electric Cooperative

### DIRECTORS:

Chairman Tom Strand, Terrebonne  
Vice Chairman Dan Steelhammer, Bend  
Secretary/Treasurer Kip Light, Madras  
Beverly Clarno, Redmond  
William J. Rainey, Sisters  
Boyd Keeton, Tumalo  
Shirley McCullough, Prineville  
Kelly McFarlane, Powell Butte  
Kenneth H. Miltenberger, Alfalfa

Attorney Robert E. Maloney Jr.  
Lane Powell PC, Portland

### STAFF:

#### President

Dave Markham

#### Chief Financial Officer

Rawleigh White

#### Operations & Engineering Director

Brad Wilson

#### Corporate Information Officer

Lisa Cutter

#### Member Services Director

Jeff Beaman

#### Bend District Manager

Karen Lewis

### 24-HOUR

### PHONE NUMBERS:

Redmond.....(541) 548-2144  
Bend.....(541) 389-1980  
Madras.....(541) 475-3266  
Prineville.....(541) 447-5321  
Sisters.....(541) 549-5698

#### Mission Statement

*The aim of Central Electric Co-op is to make electric energy available to its members at the lowest cost consistent with sound economy and good management.*

Board meets the third Thursday of each month at the CEC office, 2098 N. Highway 97, Redmond, OR.

[www.cec.coop](http://www.cec.coop)

OR-12

## President's Report

# Another BPA Rate Increase Puts Pressure on CEC Rates

Increases next month to the Bonneville Power Administration's wholesale electricity and transmission rates will likely impact Central Electric members' retail rates.

BPA, the supplier of virtually all of CEC's wholesale electricity, will increase its rates effective October 1—the start of the two-year power supply contract with its utility customers. The increases average 7.1 percent for electricity and 4.4 percent for transmission services. In July 2014, when BPA first announced its intention to raise rates, the projected percentages were higher. Fortunately, a slight reduction was achieved through the efforts of Oregon's electric cooperatives and Northwest utilities served by BPA. Rural economic recovery continues to lag behind urban areas and we objected to the magnitude of the increase.


Reasons for the wholesale power increase include growing hydroelectric system operating costs and growth in fish and wildlife program costs. BPA spent a staggering \$782.3 million on these programs in 2014 alone, accounting for about one-third of the wholesale cost of power. The transmission increase is driven by the need for new power lines and the replacement of old ones to maintain system reliability.

Biennial BPA increases have become the norm, and the agency advises us to expect the trend to continue. Since October 1, 2011, BPA has increased its energy rates 23.9 percent and its transmission rates 15.4 percent. During this period, CEC has increased rates once, 2.8 percent on January 1 this year. This shows a BPA increase does not automatically equate to a CEC increase. However, we will be challenged to achieve the same result this time around.

We will not change member rates this fall, but it is almost certain we will need to increase them in early 2016 to maintain the co-op's financial strength. The board of directors and management are analyzing the effects of the BPA increase on our finances. At the same time, we are continually working to reduce all costs within our control. For the past two years, we have reduced our operating budgets. We will again look to hold the line on expenses in 2016. Our employee count remains below that of 15 years ago despite a 36 percent increase in accounts during that time.

I am proud CEC rates are nearly 37 percent below the national average and 28 percent below Oregon's average. Any change to your rates will come only after we are certain we are achieving all possible savings without compromising the safety and reliability of the electricity we provide to you. I will keep you informed on this topic through the remainder of the year.

Sincerely,



Dave Markham

President and Chief Executive Officer



## Board of Directors

### President

Cheryl McMahan, Southern At-Large

### Vice President

John G. Herzog, Brookings/Harbor

### Secretary/Treasurer

Georgia A. Cockerham, Brookings/Harbor

Edward Dowdy, Northern At-Large

Jim Kolen, Gold Beach

Peter C. Radabaugh, Bandon

Daryl C. Robison, Port Orford/Langlois

Attorney—Tyler Pepple

## Staff

### General Manager/CEO

Roger Meader

### Corporate Services/CFO

Frank Corrales

### Operations Manager

C. Dale Wilson

### Marketing and Member Services Manager

Christine L. Stallard

### Local numbers

Coquille ..... (541) 396-3118

Port Orford..... (541) 332-3931

Gold Beach..... (541) 247-6638

Brookings ..... (541) 469-2103

Area office hours 7 a.m. to 5:30 p.m.

Monday through Thursday.

Closed Friday.

### After-Hours Outage Number

(866) 352-9044

### Call Before You Dig

811

[www.ccec.coop](http://www.ccec.coop)

OR-13

# Special Message

To those we are committed to—and serve electrically—every day.

Earlier this year, we joined 77 other Touchstone Energy cooperatives from 21 states in a member satisfaction survey. We typically survey our membership every other year. This year was the first time we participated in the national survey.

Our members gave us high satisfaction ratings for keeping the lights on, for offering payment options and a variety of services, and for being responsive, friendly and professional. That is not really news to us because we typically receive high marks in those areas. There are a couple of areas where members feel we could do a better job.

The first one is keeping them informed during outages. In last month's edition of Ruralite, we ran a story about our outage management system, including ways we are trying to communicate better. The key to notification is having accurate telephone numbers in our customer information/billing system database. Please give us a call to make sure we have your correct contact information on file so we can notify you of planned outages and keep you better informed during the unplanned ones.

The survey revealed another area of interest to members that ties in with the work we do to prevent outages and restore power when one occurs—helping one another prepare for natural disasters. While most people think of this work in the context of an earthquake or tsunami, we prepare for major storms or other major events the same way. We have an emergency/disaster plan in place and update it every year. Our employees are trained on what to do in case of an emergency or natural disaster. We work in cooperation with emergency first responders to provide training in the classroom and at community events. We plan for communitywide resilience and recovery in partnership with other organizations in Coos and Curry counties, Oregon State's Office of Emergency Management, the Pacific Northwest and across the nation.

One of these organizations, the Community Emergency Response Team, will hold a certification class in September. The CERT program educates people about disaster preparedness for hazards that may affect their area and trains them in basic disaster response skills such as fire safety, light search and rescue, team organization, and disaster medical operations. Using the training, CERT members can assist others in their neighborhood or workplace following an event when professional responders are not immediately available to help. CERT members are encouraged to support emergency response agencies by taking a more active role in emergency preparedness projects in their community.

Certification classes will be September 12, 19 and 26 from 9 a.m. to 4 p.m. There is no fee to attend, but you must attend all three classes to be certified. Classes will be at the Brookings EOC behind Brookings City Hall. Please reserve your spot with Don Kendall, Curry County's emergency management coordinator, at [kendalld@county.curry.or.us](mailto:kendalld@county.curry.or.us) or by calling (541) 247-3208.

**Roger Meader**  
General Manager



West Oregon  
Electric Co-op

A Touchstone Energy® Cooperative   
The power of human connections®

652 Rose Ave.

P.O. Box 69

Vernonia, OR 97064

(503) 429-3021

Toll free (800) 777-1276

www.westoregon.org

**BOARD OF DIRECTORS**

President Robert VanNatta  
(Dist. 2 – Mist, Apiary, Birkenfeld)

Vice President Bob Paleck  
(Dist. 5 – Timber, Buxton)

Sec./Treasurer Larry Averitt  
(Dist. 7 – Manning, Hagg Lake,  
Yamhill County)

Brian Baker  
(Dist. 1 – Jewell, Elsie, Hamlet)

Jim Buxton  
(Dist. 3 – Vernonia, Keasey)

Dan Murphy  
(Dist. 4 – Vernonia)

Rosemary Lohrke  
(Dist. 6 – Chapman, Scappoose)

**GENERAL MANAGER**

Bob Perry

Contact the Board:  
directors@westoregon.org

Board meetings are the fourth  
Tuesday of each month at 7 p.m.  
Members are welcome.

OR-14

# Power Rate Increase

In late July, the Bonneville Power Administration announced a regionwide average 7.1 percent increase in wholesale power rates and a 4.4 percent increase in transmission rates, effective October 1, 2015.

The increase in BPA wholesale rates stems from higher costs to operate and maintain the aging hydro system, higher long-term fish and wildlife costs, upgrades to an aging transmission system and reduced revenues from surplus power sales due to lower market prices for energy.

West Oregon Electric Cooperative's management and board are determining the additional revenue requirements needed to cover the increased cost of power, as well as the cost to continue maintaining our own infrastructure serving you. We understand that any rate increase will be a challenge for many of our members. I assure you we are working diligently to keep the increase as low as possible, yet maintain the system reliability and financial health of your cooperative so you can continue to enjoy the benefits of reliable electric service.



**Members' Meeting**

WOEC has scheduled a members' meeting to discuss and consider the proposed rate increase that would begin October 1, 2015. All WOEC members are invited to attend and discuss the rate proposal with the board of directors and management.

The meeting is Wednesday, September 16, at 7 p.m. at the Vernonia Fire Hall, 555 Bridge St. E.

This month, after the rate hearing, we will announce what the final rate impact will be to the membership, which will take effect this October.

Increasing costs make energy efficiency more important than ever, and we will continue to encourage our members to take advantage of our energy-saving incentive programs. The smarter we are about our energy use now, the less power we will need in the future.

**Bob Perry**  
General Manager



# Surprise Valley Electrification Corp.

516 U.S. Hwy. 395 E.  
Alturas, CA 96101

Phone (530) 233-3511  
Toll-Free: (866) 843-2667  
www.surprisevalleyelectric.org

*Office open 7 a.m. to 5 p.m.  
Monday through Friday*

After hours and outages:  
Call office numbers above

## STAFF

Brad Kresge, General Manager  
John Minto, Engineer  
Dennis Reed, Line Superintendent  
Lynn Culp, Member Service Manager

## BOARD OF DIRECTORS

Craig Joiner, President  
*Lookout*

Dennis Flynn, Vice President  
*Valley Falls*

Raymond Cloud, Secretary/Treasurer  
*New Pine Creek*

Wesley Cook  
*Cedarville*

Scott Warner  
*Lakeview*

John Erquiaga  
*Lake City*

Duane McGarva  
*Likely*

Board meets the fourth Thursday of the month at the SVE office.

**"Owned by those we serve"**

CA-15

## Join Us Saturday, September 12

Be a part of the 77th Annual Meeting of Members of Surprise Valley Electrification Saturday, September 12, at the Modoc County Fairgrounds in Cedarville. Exercise your right to vote for representatives to the cooperative's board of directors, hear reports about the successes and challenges of the past year and the year to come, and enjoy a festive atmosphere that includes lunch and musical entertainment. Join us and take advantage of your status as a customer and owner of your electric cooperative.

### Annual Meeting Agenda

- ▶ Presentation of the colors
- ▶ Invocation: Minister Dewey Potter, Church of Christ, Alturas
- ▶ Introductions: General Manager Brad Kresge
- ▶ Call of the roll: President Craig Joiner
- ▶ Reading of notice/proof of mailing: Secretary Raymond Cloud
- ▶ Reading of 2014 Annual Meeting minutes: Secretary Cloud
- ▶ President's message: President Joiner
- ▶ Manager's message: General Manager Brad Kresge
- ▶ Guest message: Ted Case, ORECA
- ▶ Youth in the cooperative: High school seniors scholarship
- ▶ Election of directors: Districts 2 and 3
- ▶ Drawing of prizes: Must be present to win
- ▶ Grand prize drawing: \$500 local shopping spree
- ▶ Adjournment

Pre-meeting entertainment provided by Klamath County Old Time Fiddlers and cowboy poet Jessica Hedges. Lions Club pit barbecue beef lunch with all the fixings is served at 11:30 a.m.



**Kathy Zandstra, left, and SVE employee Pam Robbins at the 2014 Annual Meeting of the Members.**

**BOARD OF DIRECTORS**

- Chris Seubert, President**, Central District
- Susan Knudsen Obermeyer, Vice-President**, Oakridge District
- Jack Billings, Secretary/Treasurer**, Central District
- Hugh Buermann**, Row River District
- J. Ingrid Kessler**, Central District
- Kathy Keable**, McKenzie District
- Jeri Nelson**, Oakridge District

**GENERAL MANAGER**

**Matt Michel**

**MANAGEMENT STAFF**

- Tony Toncray**; Mgr. Engineering & Operations
- Debi Wilson**; Mgr. Office & Staff Services
- Dave D'Avanzo**; Mgr. Member & Regional Affairs

**BOARD MEETINGS**

4th Monday of each month  
Lane Electric's Office, 787 Bailey Hill Road, Eugene, OR  
Meetings begin at 9 a.m.  
(Unless otherwise noted on LEC web site)

**In This Issue**

<b>Feature:</b>	<b>Page #</b>
Take A Look At LEC's Payment Options...	4 & 5
Kids Are Back To School. Drive Safe...	8
Have You Considered LEC's MAP Plus Program...	25
Power Lines...	28 & 29
Down the Line...	32

OR-16

**Down the line**



Dear Member:

The *McKenzie River Reflections* weekly newspaper reported last month on the Bonneville Power Administration's (BPA's) rate increases for the next two years. Average wholesale power rates will increase 7.1% and average transmissions rates will increase 4.4%. I'll pick up the story from there to give you some background on BPA's increase and how it will affect your electric bill.

Infrastructure costs continue to grow for the 31 dams that comprise the federal hydroelectric system in the Pacific Northwest. While the Army Corps of Engineers and federal Bureau of Reclamation operate the dams, it's your electric bill dollars that we deliver to BPA that then go on to fund those projects' maintenance and replacement programs.

What's driving the rate increase is newly re-financed debt that saved money with more favorable terms and now must start to be paid. This is in addition to the ongoing operational maintenance and capital replacement programs occurring at each dam. These costs continue to grow because the dams have been generating clean renewable power for 60 to 90 years now. As I said at last year's District Meetings, this is our proud legacy and responsibility as a long-time BPA customer since the early 1950s.

Other rate pressures include the Ferndale, Washington Alcoa smelter's decision to buy less power from BPA, lower forecasted market proceeds for that power due to abundant natural gas, and fish & wildlife program costs that mitigate the impacts of hydroelectric dams. One local example of these program costs is BPA's proposed funding of ODF&W's acquisition of 224-acres west of Eugene near Coyote Creek through a conservation easement for native wet prairie restoration and water fowl foraging.

How will BPA's rate increase affect your electric bill? We won't know until we forecast next year's revenues and expenses over the coming months. I believe we'll find a revenue gap that will create pressure for electric rates to go up. Another rate pressure is mild winter weather. A warmer January, February, and March kept your electricity bills lower, but our 2015 budget anticipated normal electricity usage to pay for your electric system. The term "belt-tightening" is being used frequently at Lane Electric these days as we postpone purchases and dial-back programs while sustaining long term commitments. I'm proud to say that thanks to Lane Electric's remarkable employees and directors, we're on track to successfully manage this significant unexpected revenue shortfall for this year.

I'll continue to keep you updated on how those rate pressures will affect your electricity bill as we go through the budget process. In the coming months your Board of Directors will work carefully and diligently to determine what the rates need to be to keep the Co-op financially sound and reliably maintained.

And visit [www.McKenzieRiverReflectionsNewspaper.com](http://www.McKenzieRiverReflectionsNewspaper.com) sometime soon to stay informed on all things going on along the McKenzie and support a local newspaper!

*MJ Michel*

Matt Michel, General Manager





## **Blachly-Lane Electric Cooperative**

90680 Highway 99  
Eugene, OR 97402  
(541)-688-8711  
(800)-446-8418  
www.blachlylane.coop

**Mission Statement:** *Blachly-Lane provides safe, reliable electric service that is consistent with the values of its members.*

### **Board of Directors:**

#### **Ernie Jacksch, Vice Chairman**

(ph: 927-3466) District 1  
jacksche@blachlylane.coop  
(Low Pass, Blachly, Deadwood and Indian Creek areas)

#### **Curtis Short**

(ph: 998-2721) District 2  
shortc@blachlylane.coop  
(Fern Ridge and Elmira-rural areas)

#### **Cheryl Haskell**

(ph: 998-3954) District 3  
haskellc@blachlylane.coop  
(Junction City-rural and Hwy 99N)

#### **Marlene Northrup, Secretary/ Treasurer**

(ph: 998-1216) District 4  
northrupm@blachlylane.coop  
(Hwy 36, Hall Road and North Poodle Creek Road)

#### **Cliff Kelley, Chairman**

(ph: 935-5728) District 5  
kelleyc@blachlylane.coop  
(Warthen, Sheffler and Walton areas)

#### **General Manager**

Joe Jarvis  
jarvisj@blachlylane.coop

A Touchstone Energy® Cooperative   
*The power of human connections*

OR-17

## **Service Reliability of Utmost Importance**

**Dear Members,**

Blachly-Lane Electric Co-op's mission is to provide safe, reliable electric service that is consistent with the values of our members. Every day, we focus on things that matter to you, such as delivering reliable electric service you can count on, employing sound and responsible business practices, and being a positive part of our community, all at the lowest possible cost.

Embedded in the mission is to do what it takes to ensure our system effectively and amply serves each of our residential, commercial and industrial members now and into the future. We are doing that through a 10-year system reliability and capacity improvement plan.

From my vantage point, I see Blachly-Lane's extremely dedicated employees take great pride and personal responsibility in working on behalf of our members. Your co-op staff wants to do what is right for you, and that is reflected in their work daily. Our board of directors is just as dedicated and has made the decision to invest the funds it will take to complete these vital system improvements. They are appropriately thinking of the long-term benefits the improvements represent.

Most importantly, we hear from you, our members, that you support the responsible and careful reinvestment of your patronage capital into a strong system that will serve you and Blachly-Lane generations to come.

A healthy electrical distribution system is essential to the health of the Blachly-Lane economy, and we take that seriously. In the coming months and years, you will see the work we are doing to make this happen. To learn more about what drives our 10-year improvement plan, see the article on pages 28 and 29 of this issue.

**Joe Jarvis  
General Manager**





**Board of Commissioners**

**Ray A. Mosbrucker**

*President*

**Randy L. Knowles**

*Vice President*

**Dan G. Gunkel**

*Secretary*

.....

**Jim Smith**

*General Manager*

**Ron Ihrig**

*Chief Operating Officer*

**John Janney**

*Chief Financial/Risk Officer*

**Gwyn Miller**

*Human Resources Manager*

**Ron Schultz**

*Chief Engineer*

**Mike DeMott**

*Customer Service Supervisor*

.....

**www.klickitatpud.com**

**Goldendale Office**

1313 S. Columbus Ave.  
Goldendale, WA 98620  
(509) 773-5891  
(800) 548-8357

**White Salmon Office**

110 NE Estes Ave.  
P.O. Box 187  
White Salmon, WA 98672  
(509) 493-2255  
(800) 548-8358

WA-18

---

## Online Bill Pay/Meter-Read Enhancements

Along with the change in the weather, you may notice a change in the Klickitat PUD online bill pay/meter-read format. If you haven't noticed the changes to online bill pay, I encourage you go online and check it out.

The first thing you will notice is you need to create a user name and password. There are step-by-step instructions to guide you through the registration process. Registration is required for both new and previously enrolled customers; there was no way around this step in our new system.

The good news is, once you complete your initial registration, the next time you visit our website to pay your bill or submit a meter read, you just need to log in to view all of your accounts.

One of the added benefits of the new format is the ability to request password resets through the online system. This eliminates waiting for business hours to contact customer support to reset your password. That puts your account management tool on your timeline.

When the original online bill pay system went into service several years ago, it was an ideal solution for customers with a single utility account. Customers could set up the account number and manage it from the comfort of their computer. However, it left a lot of customers juggling multiple account numbers and passwords, making it an inconvenient tool for managing their utility accounts. This enhancement enables customers to manage multiple accounts with a single username and password.

The new online bill pay system allows you to make payments, input multiple meter reads, review usage and enroll in KPUD programs all in one location. The ability to display PDF images of your statement and graph use by month continues to be available.

KPUD strives to provide the best customer service possible. As always, if you have any questions or feedback, please call our customer support team at (800) 548-8357, or visit the website at [www.klickitatpud.com](http://www.klickitatpud.com).



**Brandy Myers**

**Interim Customer Service Supervisor**



*The power of local service*

A Touchstone Energy® Cooperative 

www.nli.coop  
P.O. Box 269  
Sagle, ID 83864

**For Outages:**  
(866) NO-LITES  
(866) 665-4837

**For regular business  
within the Sandpoint area:**  
(208) 263-5141

**Outside Sandpoint:**  
(800) 326-9594

**Board President**  
Steve Elgar

**Board Vice President**  
Eric Anderson

**Board Secretary/Treasurer**  
Judith Simonson

**General Manager**  
Annie Terracciano

**Board of Directors by District**

Dist. No. 1—Eric Anderson, Priest Lake, ID  
(208) 610-1718

Dist. No. 2—Judith Simonson, Noxon, MT  
(406) 847-2643

Dist. No. 3—Steve Elgar, Sandpoint, ID  
(208) 265-0570

Dist. No. 4—David Pemberton, Careywood, ID  
(208) 661-5911

Dist. No. 5—Kennon McClintock, Moyie Springs, ID  
(208) 267-7064

Dist. No. 6—G.E. Butch Hagen, Bonners Ferry, ID  
(208) 819-3191

Dist. No. 7—Jim Woodward, Sagle, ID  
(208) 946-7963

ID-19

## NLI Acquires Landfill Gas Generation Project

I hope everyone has been enjoying their summer as much as I have and taken advantage of the recreational fun the Northwest has to offer. Whether you enjoy camping, hiking, boating, swimming or all of the above, we are blessed to live in an environment that allows us to get outside and appreciate our surroundings. I truly believe this is one of the best places to live.

Northern Lights, along with 13 other Northwest electric cooperatives that have joined together as PNGC Power, has acquired the Coffin Butte Landfill Gas Generation Project located near Corvallis, Oregon. The Coffin Butte Project generates clean, renewable energy that comes from landfill gas—a natural byproduct of the organic matter in the neighboring regional landfill, also known as Coffin Butte.

The Coffin Butte Gas Generation Project has a capacity of 5.66 MWs, and produces enough energy to power nearly 4,000 homes. Coffin Butte's conversion of landfill gas to energy is a cost-effective, renewable resource that reliably and predictably produces power as a baseload generator.

As a member of PNGC Power, Northern Lights pools its future needs for electricity with the 13 other rural electric cooperatives while relying on the federal renewable hydropower system, and continues to look at new generating resource options. The acquisition of the Coffin Butte Gas Generation Project marks NLI's commitment to innovative resources, responsible resource use, reliable service and low-cost energy for all its members.

—Annie Terracciano  
**General Manager**





## Idaho County Light & Power Cooperative

P.O. Box 300  
Grangeville, Idaho 83530  
Phone: (208) 983-1610  
Toll free: (877) 212-0424  
Fax: (208) 983-1432  
Email: iclp@iclp.coop  
Website: www.iclp.coop

### Directors

President Ernie Robinson  
White Bird

Vice President John Solberg  
Kamiah

Secretary-Treasurer Cliff Tacke  
Greencreek

Frank McIntire  
Kamiah

Gerald Frei  
Grangeville

Kim Dahler  
Kooskia

Jim Poxleitner  
Cottonwood

### Attorney

J.A. Wright

### Manager

Jake Eimers

c-21

## Annual Meeting is Coming Soon

### Dear Members,

In two short months, the Annual Members Meeting will be upon us. That, of course, means we are already at work preparing for the meeting. You will receive the official notice with your October Ruralite.

One reason I bring this up is to let you know your next Ruralite will be delivered a little later than usual. Our bylaws require the notice to be postmarked not more than 25 days nor less than 10 days prior to the date of the meeting. Because the meeting is Thursday, November 5, your October Ruralite will not be mailed until around October 12.

Here is a little heads up. The meeting returns to the Elks Lodge in Grangeville at our usual time. Registration opens at 11 a.m., buffet dinner is served at noon, and the meeting begins at 1 p.m.

One topic I know we will cover is the recently announced rate increase from our wholesale power supplier, the Bonneville Power Administration. We will come prepared to visit with you

about how that will affect your cooperative and you.

By the time you pick up this issue of Ruralite and scan the pages, our office remodel should be nearing completion. As I am writing this, that is a little hard to imagine, as the walls and floors are all stripped clean of their old coverings and carpet. However, general contractor (and member) Jeff Schacher assures me everything is going well and should be completed by about the end of September. By then, you will find the propane office (ICP Inc.) on your right as you enter our front doors and will continue to do business with. You electric cooperative at the counter on your left.

I hope you will drop in and visit with us on your next trip to Grangeville so we can show you around.

I hope to see you at the Annual Members Meeting on November 5.

**Thanks for listening,  
Jake Eimers, Manager**



# Columbia REA

A Touchstone Energy® Cooperative 

115 East Main Street  
P.O. Box 46  
Dayton, WA 99328  
Phone: (509) 382-2578  
Fax: (509) 382-2736

2929 Melrose Street  
Walla Walla, WA 99362  
Phone: (509) 526-4041  
Fax: (509) 526-3666  
Toll Free: (800) 642-1231

ColumbiaREA.coop

## Board of Directors

Vic Parks, President  
Katie Wooldridge, Vice President  
Eric Johnson, Sec/Treasurer  
Duane Depping, Director  
Jay DeWitt, Director  
Tom Hildreth, Director  
Greg Knowles, Director  
Dennis Munden, Director  
Tim Pettyjohn, Director

Board meetings are normally the fourth Tuesday of each month. The meeting starts at 8:30 a.m. and is usually held in the Dayton office.

## Staff

Chief Executive Officer, Les Teel  
Executive Assistant/HR,  
Jennifer Aichele  
Manager of Marketing &  
Member Services, Scott Peters  
Manager of Engineering & Operations,  
Dave Reller  
Manager of Financial Services,  
Jim Cooper  
Manager of Communications & IT,  
Bob Greene  
Manager of Safety & Regulatory  
Affairs, KC Dors

WA-22

## Letter from Les:

So how did you spend your day? Chances are cooperatives were a big part of it from dawn until bedtime; Here's how co-ops benefit you every day.

Your morning orange juice might have come from Florida's Natural, a producer-owned cooperative based in – you guessed it – Florida and distributed throughout the U.S. If your morning coffee came from Equal Exchange ([www.equalexchange.coop](http://www.equalexchange.coop)), you get bonus points because they source their coffee from farmer-owned co-ops in developing countries, and they are a worker-owned co-op. If you like milk in your coffee or cereal, check this out: more than 86 percent of all fluid milk flows through a co-op!

The wheat in your muffin or toast was likely processed through a farmer-owned grain elevator. Cranberries in that muffin? They likely came from Ocean Spray. Maybe you used Land O'Lakes Butter or Welch's Concord Grape Jam – all producer-owned co-ops.

Working parents might drop off their young children at one of the over 1,000 preschool co-ops that operate throughout the U.S.

Perhaps this is the day to make some improvements to your home. Ace Hardware, True Value and Do It Best are all examples of purchasing co-ops. These are small businesses that came together to form a co-op so that they can compete with big box retailers.

You might need to stop by the credit union for a loan or pick up some cash for that home project. More than 100 million people in the U.S. are members of a credit union, and yep, you guessed it, credit unions are co-ops.

On your way home, you may stop at one of the 300 community-owned cooperative grocery stores in the country, where many of the meat products and vegetables are also sourced from co-ops. If you are in a hurry, maybe you swing by KFC, Taco Bell or Pizza Hut to pick up dinner. The franchise owners of these fast food restaurants are all members of a purchasing co-op, just like the hardware stores above. So are the owners of Dunkin Donuts and many other franchises.

After dinner, perhaps you are watching TV from one of the more than 1,000 small cable companies that serve rural America that have come together to form a co-op to help keep costs as low as possible.

Travel plans? If you are staying in a Best Western – that is also a purchasing co-op!

And when it's time for "lights out," you can flip that switch knowing you're receiving safe, reliable electricity from your local electric cooperative, your friends at Columbia REA. From morning until night, you can have a very cooperative day.



**Les Teel**  
CEO, Columbia REA

Until next time,



A Touchstone Energy® Cooperative

16755 Finley Butte Road  
P.O. Box 127  
La Pine, OR 97739

www.midstateelectric.coop  
info@midstateelectric.coop  
(541) 536-2126 • (800) 722-7219

#### Departments

Customer Service ..... Option 3  
Engineering ..... Option 4  
Marketing ..... Option 5  
Operations ..... Option 6

**After-Hours Outage and  
Emergencies: (541) 536-2165  
or (800) 752-5935**

#### OFFICE HOURS

Monday through Thursday  
7 a.m. to 5:30 p.m.  
Closed Fridays and holidays

#### BOARD OF DIRECTORS

##### President

Vic Russell, Fall River

##### Vice President

Bud Kendall, La Pine

##### Secretary/Treasurer

Gordon DeArmond, Crescent

Diana Cox, Christmas Valley

Alan Parks, Fort Rock

Robert Reed, La Pine

Ron Sommerfeldt, Gilchrist

Leland Smith, Sunriver

Ken Wilson, Chemult

Board meets the fourth Monday  
of each month at the co-op office.

#### STAFF

##### General Manager

Dave Schneider

##### Operations/Engineering Manager

Steve Hess

##### Marketing Manager

Teresa Lackey

##### Information Services Manager

Allen Simmons

##### CFO/Accounting Manager

Jami Bartunek

##### Attorney

William Sheridan Jr.

OR-23

## Manager's Message

### Dear Member:

Last month, I told you we were involved in a rate-setting process with our power supplier, the Bonneville Power Administration. On July 24, BPA announced its power and transmission rates for fiscal years 2016 and 2017 will go up an average of 7.1 percent. The new rates are scheduled to go into effect October 1, 2015.

According to BPA, the overall power rate increase is driven by capital-related costs and increases in expenses for hydro systems' operation and maintenance, costs for fish and wildlife programs, BPA's cost of acquiring energy services, and new construction and replacement of existing transmission assets to maintain reliability and facilitate the integration of renewable resources.

The power and transmission rate increases will add \$725,000 to Midstate Electric Cooperative's cost of power. With this much of an increase from BPA, we will be forced to impose a member/consumer rate increase.

MEC's management is conducting a revenue requirements study to determine what the rates will need to be to cover the cost of power. We also are evaluating how to balance the components of your power bill: the variable components, such as the energy charges and large commercial business demand charges; and the fixed component, such as the facilities charge.

The variable charges are billed to you based on how much energy in kilowatt-hours you use each month and a portion of the facilities. The fixed charges are allocated evenly to each member via the facilities charge.

The facilities charge reflects the cooperative's monthly fixed costs that occur every day of each month, whether or not any energy is bought or sold.

Some of the fixed costs included in the facilities charge are the costs of power poles, wire, transformers and meters for construction and maintenance of MEC's system, and costs for taxes, insurance, materials and fuel.

Without a facilities charge, we would have to raise the kilowatt-hour variable charge to a much higher level, and low-energy users no longer would pay their fair share of the fixed costs.

MEC is on a 10-year plan to raise the facilities charge to a level that ensures every member/consumer pays their fair share.

I hope this clarifies what our facilities charge is, and why it is a necessary part of our business.

Every service we use in our homes—electricity, cable/satellite television, natural gas, propane or telephone—has this same type of charge somewhere in its bill. It might be called a service charge, basic charge, fixed charge or monthly minimum charge, but it is basically the same thing.

For more information about MEC's facilities charge, please visit our website, [www.mse.coop](http://www.mse.coop).

Next month, we will let you know the amount of the member/consumer rate increase. As we work through this process, I assure you we are doing everything we can to reduce the impact of the BPA increase while continuing to provide you with safe, affordable, reliable power.

**Dave Schneider, General Manager**



[www.rrelectric.com](http://www.rrelectric.com)

**DIRECTORS**

President Larry Henson  
Vice President Dennis Poulsen  
Secretary-Treasurer Larry Monroe  
Ralph Scissons  
Stan Spencer  
Krinn McCoy  
Doug Webb  
Gary Jones  
Blaine Tanner

**GENERAL MANAGER**

Heber Carpenter

**OPERATIONS MANAGER**

Kim Smith

Board meets the fourth Wednesday  
of each month

**P.O. Box 617**  
**Malta, ID 83342**

**To call Raft River**

- Office hours (208) 645-2211
- Toll free (800) 342-7732  
(After hours and outages)

**Western Division**

(All calls for Jackpot, Jarbidge,  
Mountain City and Owyhee)

- Office hours (208) 645-2211
- Toll free (800) 342-7732  
(After hours and outages)



Touchstone Energy®  
*The power of human connections*

ID-24

## Teach Kids School Bus Safety

For millions of students nationwide, the school day begins and ends with a trip on a school bus. Unfortunately, many children are injured and several are killed each year in school bus incidents.

Although drivers of all vehicles are required to stop for a school bus when it is stopped to load or unload passengers, children should not rely on them to do so. The National Safety Council encourages parents to teach their children these rules for getting on and off the school bus.

### Getting on the Bus

- When waiting for the bus, stay away from traffic.
- Do not stray into streets, alleys or private property.
- Line up away from the street or road as the school bus approaches.
- Wait until the bus has stopped and the door opens before stepping onto the roadway.
- Use the handrail when stepping onto the bus.

### Getting off the Bus

- If you have to cross the street in front of the bus, walk at least 10 feet ahead of the bus along the side of the road until you can turn around and see the driver.
- Make sure that the driver can see you.
- Wait for a signal from the driver before beginning to cross.
- When the driver signals, walk across the road, keeping an eye out for sudden traffic changes.
- Do not cross the center line of the road until the driver has signaled that it is safe for you to begin walking.
- Stay away from the wheels of the bus at all times.

### Crossing the Street

Children should always stop at the curb or edge of the road and look left, then right and then left again before crossing. They should continue looking in this manner until they are safely across the street.





## BIG BEND ELECTRIC COOPERATIVE, INC.

**P.O. Box 348  
Ritzville, WA 99169**

Ritzville office 659-1700

Toll free (866) 844-2363

[www.bbec.org](http://www.bbec.org)

### TRUSTEES

President Curtis Dahl  
Vice President Daniel Hille  
Secretary Ken Story  
Treasurer John Harder  
Robert Clinesmith  
Lyle Holt  
Stacy Kniveton  
Lanny Hayes  
Dennis Swinger Sr.

### GENERAL MANAGER/CEO

Yvette Armstrong

### LEGAL COUNSEL

Kenneth D. Carpenter

.....

Ritzville, Lind, Washtucna area  
after hours, Saturday, Sunday and  
holiday emergency calls:

**659-0487**

All other areas after hours, Saturday,  
Sunday and holiday emergency calls:

**(866) 844-2363**

WA-25

## A Message for Irrigators

As the irrigation season winds down, irrigators start to think about next year.

Did your irrigation system run efficiently this year? If the answer is no, you may need to consider a few things, such as new sprinkler packages, updating your pump or installing a variable-frequency drive. Each of these upgrades may qualify for a Big Bend Electric Co-op conservation rebate.

When was the last time you had a pump test? We can help you get a test and find out what improvements are needed so your pump station can deliver water efficiently and evenly. Improving your pump's efficiency also may qualify for conservation rebates.

Would your system perform more efficiently if a variable-frequency drive were installed? When a motor is partially loaded, it is not as efficient as when it is fully loaded. A VFD can change motor speed to operate as if it is always fully loaded. This means a VFD can save energy and money if varying operating conditions exist. If motor operation is the same most of the time, there may be little or no savings.

VFD motors can generate harmonics. This is a form of electrical pollution that flows through your electrical system and the cooperative's system. Harmonics cause problems with sensitive electrical equipment. The industry standard, IEEE-519, requires harmonics to remain below a specific level. BBEC includes this standard in all retail rate tariffs.

As a result, harmonic filters may be needed when designing a system that meets industry and co-op requirements. Your dealer should be aware of the industry standard, the cooperative's requirement and how to design a system to meet both.

There are several questions you should ask your dealer:

- Do my operating conditions vary enough to justify the installation of a VFD?
- Are you aware of the IEEE-519 harmonic standard?
- Are you aware the cooperative has requirements limiting harmonics?
- Given the above, will a VFD produce savings for me?

If you are considering a VFD, please call Manager of Engineering Christina Carter at BBEC to discuss the co-op's requirements. You also will want to talk to Member Services Manager Dale Anderson about possible irrigation system rebates.

# Hood River Electric Cooperative



P.O. Box 125  
3521 Davis Drive  
Odell, OR 97044

(541) 354-1233  
www.hrec.coop

.....

#### DIRECTORS

President Butch Gehrig  
Vice President Patrick Moore  
Secretary Bernie Wells  
Treasurer Roger Nelson  
Gary Bloom  
Opal DeBoard  
Doug Mahurin  
John McGhee  
Dick Sohler

#### MANAGER

John Gerstenberger

.....

Serving rural  
Hood River County  
since 1945

OR-26

## Manager's Message

Greetings!

Each year, the National Rural Utilities Cooperative Finance Corporation compiles financial and operational statistics of more than 800 member systems. CFC is a cooperative—owned by its member cooperatives—that provides loan and investment products and services. Hood River Electric Cooperative has been a CFC member since 1998.

The compilation of statistics, known as a key ratio trend analysis, spans the past five years. Results are grouped and comparisons made of all participants nationwide, participants within each state, co-ops of like size and those served by a common wholesale power supplier. We are then able to see how HREC ranks nationally, within Oregon, with other small co-ops and among the Bonneville Power Administration's cooperative utility customers.

HREC is one of the smallest participants in terms of members served, energy sales and investment in distribution infrastructure. However, your cooperative ranks among the best of approximately 800 participants in terms of financial strength, efficiency and reliability.

I am particularly proud that only 36 participating cooperatives in the nation returned a higher percentage of capital credits to their members in 2014. Cumulatively, HREC has returned 50.25 percent of all margins retained from past years of operation. That is the best in Oregon and 21st of 704 on a national basis. Our controllable expenses per consumer are up to 30 percent lower than average in three of four groupings: Oregon, similar-size co-ops and BPA customers. On a national comparison, we are about 9 percent higher than average.

Your board of directors and I review and discuss the key ratio trend analysis each year. We note if and where any of our values appear to be declining and why. The report is an important and beneficial tool for benchmarking HREC against others providing similar services under common circumstances.

**John Gerstenberger**  
Manager



# Harney Electric Cooperative



A Touchstone Energy®  
Cooperative   
*The power of human connections®*

277 Lottery Lane  
Hines, OR 97738  
(541) 573-2061  
hec.burns@harneyelectric.org

Orovada, Nevada  
(775) 272-3336  
orovada.office@harneyelectric.org

[www.harneyelectric.org](http://www.harneyelectric.org)



.....  
**Board of Directors**

President John Ugalde  
Vice President Joe Cronin  
Sec./Treasurer Gary Miller  
Frank Albisu  
Rod Hoagland  
Alex Dufurrena  
Zach Sword

**General Manager**

Randy Whitaker

**Operations Manager**

Brent Beverly

**Line Superintendent**

Jason Hill

**Electrical Engineer**

Shane Sweet

**Office Manager**

Fred Flippence

**Attorney**

Raymond S. Kindley

OR-27



## Watch for Back-to-School Kids

### Drivers should take precautions around schoolchildren.

On average, 26 children in the United States are killed every year while getting on or off a school bus, or while waiting at the bus stop. To avoid such tragedies, drivers are reminded to:

- Carefully back out of driveways. Watch for children walking to the bus stop.
- Slow down. Watch for children walking in the street and playing or congregating near bus stops—especially in the early morning hours, when it may still be dark.
- Be alert. Children arriving late for the bus may dart into the street without looking.
- Obey the law. Yellow flashing lights on a bus mean motorists should slow down and prepare to stop. Red flashing lights mean motorists must stop their cars and wait until the red lights stop flashing, the extended stop sign is withdrawn and the bus starts moving again. Unless there is a median, oncoming traffic also must stop.



P.O. Box 384  
Challis, ID 83226  
Phone: (208) 879-2283  
Fax: (208) 879-2596  
After-hours emergency numbers:  
Propane: (208) 879-2201  
Electric: (208) 879-4900

#### **Board of Directors**

President Bob Boren  
Vice President Jeff Bitton  
Sec./Treasurer Norman Wallis  
Michael Miller  
Doug Parkinson  
Steve Rembelski  
Earl Skeen

Manager Ken Dizes  
Attorney Dale Storer

**Board meets the third  
Wednesday of each month**

**Email: [energy@srec.org](mailto:energy@srec.org)**

**Website: [www.srec.org](http://www.srec.org)**

A Touchstone Energy<sup>®</sup>  
Cooperative



ID-28

## Outage Response

### **Dear Members:**

We take pride in delivering your power. Your electric cooperative continues making power available to your homes and businesses more than 99 percent of the time.

One reason for our success is our quick outage response. Considering we have nearly 800 miles of distribution power lines and the distance from one end of our electrical system to the other is approximately 150 miles, our quick response is remarkable.

We have partnered with the Cooperative Response Center to handle our 24/7 after hours, weekend and holiday power outage dispatch. CRC is cooperatively owned by its members—a partnership of electric cooperatives, electric member corporations, public power districts and public utility districts. CRC has 325 member-owners representing six million customers. They have call centers in Minnesota, Tennessee and Texas. CRC started as a central station alarm monitoring service in 1992. In 1995, it began call-handling and line crew dispatch. Today, CRC offers video verification monitoring, outage texting and customer billing.

Prior to partnering with CRC, outage calls were often handled by linemen, their families and management. Our linemen were often in the field responding to an outage when additional outage calls were incoming. We were not always able to handle the calls promptly. In addition, our linemen had no way to contact our electric customers while they were responding to outages in the field. Most importantly, our linemen had limited ability to contact help in an emergency.

We looked at many alternatives to address these deficiencies in our outage communications. CRC was chosen because it provides the most cost-effective outage dispatch and customer service.

One challenge for our electric customers has been calling CRC to report a power outage, and speaking with someone who does not know them or where they live. The personal touch just isn't there. I apologize for that.

We continue to look for ways to improve your experience with your outage calls. We have given CRC specific instructions on how to handle our power outage calls, including taking calls even if adequate information to timely dispatch line crews is lacking. We can better serve you and respond to your power outage if you provide the correct address, account name and number, meter number or power pole number where the outage is.

Please contact me to let me know how we handled your power outage, good or bad. We constantly look for ways to best serve you—our member-owners.

—Ken Dizes, Manager



**Ken Dizes**

# United Electric Co-op Inc.

## Directors

President Dean Nielsen  
Vice President Bruce Beck  
Sec./Treas. Cordell Searle  
Brent Bowen  
Ronald Osterhout  
David Phillips  
George Toner  
John R. West

## General Manager

Jo Elg

## Engineering and Operations

Trevor Parke

## Line Superintendent

Dan Kidd

## Executive Assistant

Penny West

## Manager of Finance and Admin.

Curtiss Peterson

## Community Relations Manager

Chris Seibold

## Mailing address:

1330 21st St.

Heyburn, ID 83336

**Phone:** (208) 679-2222

**Fax:** (208) 679-3333

**Email:** [uec@unitedelectric.coop](mailto:uec@unitedelectric.coop)


**Website:** [www.uec.coop](http://www.uec.coop)

**Office hours:** Monday-Friday,  
8 a.m. to 5 p.m.

**After Hours:** (208) 679-4444



**UNITED ELECTRIC**  
CO-OP, INC.

Your Touchstone Energy® Cooperative 

ID-29

## On the Wire at United Electric

The National Safety Council promotes National Farm Safety and Health Week Sunday, September 20, through Saturday, September 26. The weeklong celebration commemorates the hard work, diligence and sacrifices of our nation's farmers and ranchers. The September 2015 event marks the 72nd year of the recognition, which has included a presidential proclamation every year since 1944.

The risk of injury is a daily reality for many agricultural workers. They are exposed to hazards from handling chemicals, transporting large machinery, livestock and entering hazardous grain storage bins. With preparation and proper training, these risks can be mitigated and lives can be saved.

According to statistics from the Bureau of Labor Statistics, the fatality rate in the agriculture industry is among the top 10 of all occupations. This is especially relevant during fall harvest season, as farmers put in long hours under the stress of weather delays, equipment breakdowns and high operating costs.

The theme of 2015 Farm Safety Week is "Ag Safety is not just a slogan, it's a lifestyle." It's a theme that also can be applied to the electric utility industry.

As an electric utility, the board of directors, employees and management at United Electric are keenly aware of job hazards and are committed to safety. The commitment to safety extends beyond daily work at United Electric. It extends into the community. United Electric provides electrical safety education at local schools, farms and fire stations.

If you are interested in electrical safety education, please contact us. Let's commit to making safety a lifestyle.

Jo Elg  
General Manager



**it's a lifestyle.**

**National Farm Safety  
& Health Week  
September 20-26, 2015**



# Lost River Electric Cooperative Inc.

305 Pine Street  
P.O. Box 420  
Mackay, ID 83251-0420

Phone: (208) 588-3311  
Fax: (208) 588-3038  
Email: office@lrecoop.com

## Directors

Brad J. Gamett  
President

Susan M. Harris  
Vice President

Bret L. Zollinger  
Secretary/Treasurer

Chad H. Angell  
James D. McKelvey  
Randy R. Purser  
Lynn O. Rothwell  
Wiley F. Smith  
Merlin A. Waddoups

## Manager/CEO

F. Richard Reynolds

The Board of Directors  
meets the second Friday  
of each month and 10 a.m.

ID-30



## Help Your Child Succeed in School

Parents want to see their children grow up to become well-adjusted, happy and successful adults. Most parents know that for their children to be successful, they need a good education.

Studies show that children do better in school if their parents are involved in their education. Although small children are inquisitive and eager to learn, they need encouragement and reinforcement to start them off and keep them going in the right direction in school.

Good reading skills are necessary for success in school. Here are some tips to help your child develop good study habits and a lifetime love of learning:

- **Start early by instilling a love for learning.** Read to preschool children every day. It arouses their natural curiosity and encourages them to want to learn to read for themselves.

- **Provide books and supplies.**

Give your children the tools they need to improve their reading and complete projects.

- **Work out a schedule.** Decide how much time should be set aside for homework, and establish a routine.

- **Help your children get organized.** Using a calendar gives students a sense of accomplishment.

- **Designate a quiet, comfortable place for studying.** Study in the same place every day, away from distractions.

- **Provide reinforcement.** Praise your children for working hard and completing assignments.

Talk with your children about what is going on in the world around them. Encourage new ideas and interests.

Set an example. Parents are, after all, the most important teachers in a child's life. ■



### Board of Directors

Paul Kildal, President  
Lon Rake, Vice President  
Mary Odden, Secretary  
Will Stark, Treasurer  
Michael Johnson, Director  
Jeff Saxe, Director  
Dan Stowe, Director  
Fred Williams, Director

P.O. Box 45  
Glennallen, AK 99588  
www.cvea.org

### Copper Basin District

(907) 822-3211  
(907) 822-5586 (fax)  
Mile 187 Glenn Hwy.

### Valdez District

(907) 835-4301  
(907) 835-4328 (fax)  
367 Fairbanks Dr.

### After hours outage line

(866) 835-2832

### Important Dates

#### September

**CVEA Offices Closed:** The CVEA offices will be closed, Monday, September 7, 2015, for Labor Day

**CVEA Board Meeting:** The September meeting of the Board of Directors has been cancelled

#### October

**Cooperative Month Celebration and Community Foundation Fundraiser:** Stop by the CVEA office in your district from 11-1 p.m., Thursday, October 1, 2015, in Glennallen, and Friday, October 2, 2015, in Valdez; watch for event details

**Ruralite Cover Photo Contest:**

Submit photos October 1 - October 29, 2015

**CVEA Board Meeting:** The October meeting of the Board of Directors is 1 p.m. Thursday, October 15, 2015, in Glennallen

**Halloween Trick or Treat Event:** Stop by the CVEA office in your district for Halloween fun from 3-5 p.m., Friday, October 30, 2015

AK-34

## Winter is On The Way

Winter is on the way for CVEA members and with it comes the end of CVEA's construction season and the start of the winter generation season.

### Construction Season

As we approach the end of September, we are soon promised colder temperatures, frozen ground, and winter weather. Along with this comes the end of CVEA's construction season. If you are planning any new construction or an electrical service upgrade before the end of the season, please contact CVEA at 822-3211 in the Copper Basin, or 835-4301 in Valdez, as soon as possible.



### Winter Generation

Heading into winter, inflows at Solomon Gulch stop and the lake level begins to fall as the water is used to generate hydroelectricity. This is what is called the winter generation season, and it typically runs October through May.

During winter CVEA backs off Solomon Gulch to manage water use, and brings the Cogeneration Plant online which generates the majority of CVEA's requirements, roughly 75 percent, using fuel.

Due to the high cost of fuel, CVEA members should expect to see higher electric bills throughout the winter generation season, typically beginning in October.

Members can easily see this impact by reviewing their electric bills. There is a separate line item on the bill that denotes the amount each individual member is charged for the fuel cost associated with their electric usage.

CVEA encourages members to prepare for the fuel charges that will begin to increase their bills starting in October. Visit the CVEA website at [cvea.org/resources/pdfs/copHistory.pdf](http://cvea.org/resources/pdfs/copHistory.pdf) for a rate history or to research individual historical charges.

CVEA also encourages members to take control of their power bill by becoming more efficient with their energy usage. Often times, a substantially higher winter bill is not only caused by high fuel costs, but increased usage during the coldest, darkest time of the year. Preparing a home for winter is the first line of defense against high energy consumption during winter months.

Don't forget to visit [cvea.org](http://cvea.org), or [togetherwesave.com](http://togetherwesave.com), for many great ways to help reduce energy consumption this winter and lower monthly bills.

If you have questions or would like to review your power bill with a CVEA representative, contact Sharon Crisp at 822-5506, 835-7005, or email [crisp@cvea.org](mailto:crisp@cvea.org). ■



1115 Pacific Ave. • P.O. Box 433  
Tillamook, OR 97141  
Phone: (503) 842-2535  
Toll free: (800) 422-2535  
[www.tpud.org](http://www.tpud.org)

Office hours are 8 a.m. to 5 p.m.  
Monday through Friday.

For EMERGENCY service after  
business hours, call (800) 842-2122.

#### Board of Directors

Ken Phillips, President  
Harry Hewitt, Vice President  
Barbara Trout, Treasurer  
Doug Olson, Secretary  
Ed Jenkins, Director

#### General Manager

Raymon Sieler

Board meetings are in the PUD office  
at 6 p.m. the first Tuesday after the  
11th of the month.

#### Mission Statement

Tillamook People's Utility District  
is dedicated to delivering the best value of  
electric services, while continuing our  
commitment to the customer-owners and  
communities we serve.

#### Creed

We shall work together to:

- ▶ Provide exceptional customer service;  
anticipate and strive to exceed our  
customers' needs.
- ▶ Provide high-quality and cost-effective  
services to our customers.
- ▶ Ensure a safe electrical system and  
working environment for our customers  
and employees.
- ▶ Operate a financially stable business.
- ▶ Encourage cooperation and open  
communication among the customers,  
board of directors, management and  
employees of Tillamook PUD.
- ▶ Support all the communities we serve.
- ▶ Be environmentally responsible.

OR-35

#### Dear Customers,

With children going back to school this month, it is a good time to look at ways to save energy. Children at school may mean an unoccupied house during the day. That, in itself, is saving energy. Here are a few other ways to save:

- **Adjust your thermostat.** If your home is unoccupied for more than four hours, it is cheaper to turn off your heating or air conditioning than it is to maintain the temperature. It is as easy as turning the heat down or the air conditioning up, or consider a programmable thermostat to take care of it automatically.

- **Unplug chargers.** Chargers for phones, tablets and every other electronic gadget are everywhere. Leaving chargers plugged in uses energy whether they are charging a device or not. The wasted energy is not huge, but it is zero energy if you unplug them when not in use.

- **Power down the entertainment equipment.** TVs, DVD players, game stations and cable boxes all use power whether they are on or off. Consider plugging them all into a power strip or, better yet, a surge suppressor, and flip the switch off when not in use.

Visit [www.tpud.org](http://www.tpud.org) for more ideas on how you can save energy and money this fall and every day of the year. Give our energy-efficiency experts a call at (503) 842-2535 to schedule a free energy audit to determine how you can best get started. We offer a variety of weatherization programs and incentives to help you create a more efficient home or business.

Sincerely,

**Raymon D. Sieler**  
General Manager





P. O. Box 449  
Barrow, AK 99723  
Phone: 852-6166  
Fax: 852-6372  
www.bueci.org

### **Board of Directors**

#### **President**

Price E. Brower

#### **Vice President**

Roy Nageak Sr.

#### **Secretary/Treasurer**

Don Nungasak

Doreen A. Ahgeak  
Herman Ahsoak  
Frederick F. Brower  
Lewis F. Brower  
Ellen Leavitt  
Richard Ungarook Sr.

#### **General Manager**

Ben L. Frantz

AK-36



# **Keep An Eye On Your Kids**

## **Teach children not to play with electrical cords.**

It is never too early to teach children about electrical safety. It can help them avoid unsafe behavior. To prevent injury to children from electrical cords:

- Keep cords in the house tied up or out of sight in high traffic areas. Tripping on cords is a safety and electrical hazard. Tie-backs and clips can be purchased to make sure cords are out of sight and out of mind.
- Show your children how to unplug cords when they are old enough. They should know to pull the cord out by the plug, and not by the cord.
- Unplug all appliances when they are not being used. Keep them away from the edge of the counter—beyond a toddler's grasp—and keep the cords out of reach.
- Replace any damaged electrical cord.



AK-37

## Owned By Those We Serve

### BOARD OF DIRECTORS

Bill Nordmark, Chairman (District 7)  
Tom DeLong, Vice-Chairman (District 2)  
John Sloan, Secretary (District 6)  
Rick Schikora, Treasurer (District 3)  
Chris Bunch (District 5)  
Aren Gunderson (District 1)  
Gary Newman (District 4)

### MAIN OFFICE

758 Illinois Street  
PO Box 71249  
Fairbanks, AK 99707-1249

Regular Business Phone  
(907) 452-1151  
Fax (907) 458-6365  
Member Services

### DISTRICT OFFICES

#### Delta Junction

1681 Richardson Hwy.  
PO Box 909  
Delta Junction, AK 99737  
(907) 895-4500  
Fax (907) 895-5472

#### Nenana

7259 Parks Hwy.  
PO Box 00130  
Nenana, AK 99760  
(907) 832-5481  
Fax (907) 458-6387

Toll-Free Number  
1-800-770-GVEA (4832)

[www.gvea.com](http://www.gvea.com)



# Healy Unit 2 Power Plant another step closer to commercial operation

On August 4, GVEA's Healy 2 Power Plant was fired on coal for the first time since 1999.

This began a two-month testing phase, as the plant transitions from running on oil to coal. The plant will be brought up and down, from 5 to 50 megawatts, in order to test equipment and systems. Full commercial operation is expected to begin later this fall.

Work will continue at the plant for the next two years. The new environmental controls will be housed in a new addition to the plant, which is approximately 55 percent complete and scheduled to be finished in the summer of 2017. A new 9,000-sq.-ft. warehouse is also being erected adjacent to the power plant.

The Healy 2 Power Plant operated briefly in 1999, but was idled when it failed the 90-day commercial operation test. In December 2013, GVEA purchased Healy 2 from the Alaska Industrial Development and Export Authority (AIDEA). Crews have spent the past 18 months retrofitting and refurbishing the plant, which included updating systems and replacing obsolete controls.



The Selective Catalytic Reduction (SCR) addition is shown under construction. This is a new addition to Unit 2 and will house the new environmental controls. Much of the equipment has already been installed, since the easiest way to install it is to erect the building around it. Photo by Tina Graham

About 90 workers are involved with the restart. Once Healy 2 is in commercial operation, 30 regular, full-time jobs will be added in the Denali Borough.

This 50-megawatt power plant increases our baseload of coal-fired generation and will provide long-term rate stability, since coal prices over time have proven to be significantly less volatile than oil or gas prices.

The benefits and costs of Healy Unit 2 will be reflective in the rate case GVEA anticipates filing in 2016.

For more information on GVEA's Healy Unit 2 Restart project go to [www.gvea.com/energy/healy2](http://www.gvea.com/energy/healy2). ■

## COMMUNITY CALENDAR

### September 3

**Quincy Certified Farmers Market. Corner of Church and Main.** 4:30 to 7:30 p.m. Event is open to the public, and features local and regional farmers and ranchers, crafters, artisans and live music with Stone Soup.

For more information, go to [www.quincycertifiedfarmersmarket.org](http://www.quincycertifiedfarmersmarket.org).

### September 3 and 11

**Sierra Valley Farms Farmers Market.** 1329 County Road A23, Beckwourth. 10 a.m. to 2 p.m.

For more information, call (530) 832-0114, or visit [www.sierravalleyfarms.com](http://www.sierravalleyfarms.com).

### September 4

**Artist's Opening Reception.** Plumas Arts Gallery, 525 Main St., Quincy. 5 to 7 p.m.

For more information, call (530) 283-3402.

**Artist's Opening Reception.** Main Street Artists Gallery, 432 Main St., Quincy. 5 to 7 p.m.

For more information, call (530) 283-1909.

**Celtic Music with Ha' Penny Bridge Band.** West End Theatre, 541 Main St., Quincy. 7 p.m. Tickets \$10 in advance, \$12 at the door.

For more information, call (530) 283-1956.

### Cowboy Musician with Dave Stamey.

Greenhorn Creek Guest Ranch, 2116 Greenhorn Ranch Road, Quincy. Dinner 5 p.m., concert 7 p.m. Feather River College Equine Studies Fundraiser. Presale tickets: concert \$20, dinner \$15, Package \$35. At-the-door tickets: Concert \$25, dinner \$15, package \$40. Limited outdoor seating available, bring your chair or blanket.

For tickets or more information, call (530) 283-0930, or visit [www.greenhornranch.com](http://www.greenhornranch.com).

### September 4-6

**Antique and Collectibles Fair.** Graeagle Fire Hall. Friday, noon to 6 p.m.; Saturday, 10 a.m. to 5 p.m.; Sunday, 10 a.m. to 4 p.m. Wide selection of quality antiques and collectibles. Fundraiser for Eastern Plumas Chamber of Commerce.

For more information, call (530) 832-6811, or email [epcc@psln.com](mailto:epcc@psln.com).

### September 5, 19 and 26

**Lassen Land & Trails Trust Farmers Market.** 601 Richmond Road, Susanville. 8 a.m. to noon.

For more information, call (530) 257-3252, or visit <http://lassenlandandtrailstrust.org/farmer-s-market.html>.

### September 10

**Lassen County Chamber of Commerce Mixer.** 5:30 to 7:30 p.m. Hosted by Artisan Coffee, Steve's Pumps and Pizza Factory, 464-440 Church St., Janesville.

For more info call (530) 257-4323.

**Calpine Marketplace. Calpine Park.** 10 a.m. to 4 p.m. Free to the public. Classic cars, live

music, raffle, art and craft vendors, kids' games, barbecue, beer and wine garden, bake sale. Fun for the whole family.

For more information, call (925) 878-1640, or email [s\\_estrada@sbcglobal.net](mailto:s_estrada@sbcglobal.net).

### September 12

**Plumas-Sierra REC Annual Member Meeting.**

Portola office, 73233 State Route 70. 10 a.m. to 2 p.m.

For more information, call (530) 832-4261.

**College Application Essay Workshop.** Quincy Collective, 91 Church St. Noon to 3 p.m.

Incoming college freshmen or transfer students learn to write the perfect college essay for their college applications. \$55.

For more information, call (530) 375-0580, or email [writerchickmama@gmail.com](mailto:writerchickmama@gmail.com).

**Dinner in the Barn.** Sierra Valley Farms, 1329 County Road A23, Beckwourth. \$125 per plate.

For more information, call (530) 832-0114.

### Honey Lake Valley Riders Horse Show.

Janesville Park. Show, 8 a.m., play day, 2 p.m.

For more information, email [hlvrr@honeylakevalleyriders.org](mailto:hlvrr@honeylakevalleyriders.org).

**Tomato Tasting & Purses for Pets.** Every Bloomin' Thing, 705-620 US-395, Susanville. 2 to 6 p.m. Free admission, live music, silent auction, wine.

For more information, call (530) 251-2330.

### September 13

**Rotary Club of Portola Fly-in Breakfast.**

Beckwourth Nervino Airport. 8 to 11 a.m. This event is fun for the entire family. This year, free airplane rides are available for kids 18 and younger.

### September 16

**Wild & Scenic Film Festival.** Quincy Town Hall Theatre, 469 Main St. Showtime 6:30 p.m. \$10 in advance, \$12 at the door. At Wild & Scenic, film-goers are transformed into a congregation of committed activists, dedicated to saving our increasingly threatened planet.

### September 19

**Historic Uptown Susanville Association Fall Crafters Festival.**

9 a.m. to 2 p.m. Uptown Susanville. Crafts and sidewalk sales.

For more information, call (530) 257-2249.

### September 20

**Food, Blues and Views Summer Concert Series.**

Sierra Valley Farms, Beckwourth. 4 to 6:30 p.m. Featuring Johnny "V" Vernazza Band and special surprise guest band. \$60.

For more information, call (530) 832-0114, or visit [www.sierravalleyfarms.com](http://www.sierravalleyfarms.com).

### September 24-27

**Lost Sierra Hoedown.** Johnsville Historic Ski Bowl. Fundraiser for Johnsville Ski Hill, tickets \$100.

For more information, visit [lostsierraheodown.com](http://lostsierraheodown.com), or email [info@lostsierraheodown.com](mailto:info@lostsierraheodown.com).

### September 24-26

**The Adventures of Sad Girl: The Superheroine.**

Live production at the West End Theatre, 541 Main St., Quincy. 7 p.m. Playwright Margaret Elysia Garcia of Writerchickmama Productions debuts her new play.

For more information, email [writerchickmama@gmail.com](mailto:writerchickmama@gmail.com).

### September 30

**Dave and Phil Alvin with The Guilty Ones Concert.**

Quincy Town Hall Theatre, 469 Main Street. 7:30 p.m. \$25 Plumas Arts members, \$30 nonmembers.

## Manager's Message

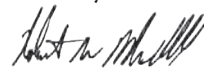
*Continued from page 32*

They also introduce them to the cooperative way, teaching the value of involvement and commitment to their communities.

Please see page 4 for more information on the Washington Youth Tour, and visit our website at [www.psrec.coop](http://www.psrec.coop) for more information on all of our youth opportunities.

If you have any questions, please call me at (800) 555-2207 ext. 6076, or email me at [bmarshall@psrec.coop](mailto:bmarshall@psrec.coop).

Sincerely,



Bob Marshall  
General Manager



Your Touchstone Energy® Cooperative 

#### BOARD OF DIRECTORS:

##### President

Dave Roberti, *Sierra Valley*  
[droberti@psrec.coop](mailto:droboti@psrec.coop)

##### Vice President

Fred Nelson, *Clio*  
[fnelson@psrec.coop](mailto:fnelson@psrec.coop)

##### Secretary/Treasurer

David Hansen, *Doyle*  
[dhansen@psrec.coop](mailto:dhansen@psrec.coop)

Dan Kenney, *Sloat*  
[dkenney@psrec.coop](mailto:dkenney@psrec.coop)

Ole Olsen, *Graeagle*  
[oolsen@psrec.coop](mailto:oolsen@psrec.coop)

Tom Hammond, *Herlong*  
[thammond@psrec.coop](mailto:thammond@psrec.coop)

##### Manager

Robert (Bob) Marshall  
[bmarshall@psrec.coop](mailto:bmarshall@psrec.coop)



Our subsidiary,  
**Plumas-Sierra  
Telecommunications**

offers a variety  
of high-quality  
Internet solutions.  
For more information,  
please visit  
[www.pst.coop](http://www.pst.coop) or call  
(800) 221-3474

For information about any  
of our products, please  
call (800) 555-2207 or  
visit our website at  
[www.psrec.coop](http://www.psrec.coop)

CA-39

## Manager's Message

### Dear Members:

The cooperative's 2015 annual meeting is Saturday, September 12. We hope you will join us for a fun, informative day at the co-op. This year's meeting will feature interactive displays of the many things you can do with broadband, a health fair by Eastern Plumas Health Care and a grand prize of \$500 off your electric bill.

This is always a lively event with great opportunities to ask questions about your electric cooperative and its telecommunications business.

### Meters

Recently, the local newspaper covered a case involving a dispute regarding metering and PSREC's rules and policies. Unfortunately, there were a few factual errors we need to correct.

PSREC does not use smart meters. Smart meters are, by industry standards, two-way meters that send and receive data in real-time. We do not install this type of meter. We measure energy use through radio meters. Our meters use one-way automatic meter reading technology that provides electric usage readings once a month.

Contrary to what the paper and a single employee at the California Public Utilities Commission said, PSREC is regulated by the CPUC, except for rates and financing. Our rules of operation are approved by the CPUC, along with safety guidelines and service territory. A good example is when we expanded the cooperative's territory in Herlong in 2002. CPUC ruled (Decision 02-04-011) for the expansion of our service territory and operation under their jurisdiction as defined in the Public Utility Code. Section 701 states, "The commission may supervise and regulate every public utility in the State and may do all

things, whether specifically designated in this part or in addition thereto, which are necessary and convenient in the exercise of such power and jurisdiction." Therefore, PSREC follows applicable CPUC decisions and models its policies based on rulings that may apply to other utilities, but that make sense for PSREC to follow.

As the community's local, member-owned electric utility, PSREC strives to keep member-owner interests in mind while working to keep the lights on and costs low.

In addition, when members want custom services, we are glad to provide them, as long as those services are not subsidized by the general membership.

### WRAP Program

We are again offering a discounted rate for qualifying members through our Winter Rate Assistance Program. The discounted rate is available for November through April electricity use to income-qualified members.

The WRAP program provides educational information to help members conserve energy and offers a discounted electric rate during the heating season.

For more information and an application, visit [www.psrec.coop](http://www.psrec.coop), or call (530) 832-4261.

### Youth Opportunities

As part of our commitment to the communities we serve, PSREC and its subsidiary offer life-changing opportunities to local youth, including scholarships and the Washington Youth Tour.

These programs provide enriching experiences to help young people discover themselves and their roles as citizens.

*Continues on page 28*



## MT. WHEELER POWER

P.O. Box 151000  
1600 Great Basin Blvd.  
Ely, NV 89315

(775) 289.8981  
(800) 97-POWER  
info@mwpower.net

### Emergency Contacts

Ely Office  
(775) 289-8981

Eureka Office  
(775) 237-5693

Outside Ely / Eureka Area  
(800) 97-POWER

### Board of Directors

- District 1 – Ron Miller
- District 2 – Bob Swetich
- District 3 – Jerry Morrill
- District 4 – Don Phillips
- District 5 – Rick Hendrix
- District 6 – Jerald Anderson
- District 7 – Sandra Green
- District 8 – Wilma Sanford
- District 9 – Frank Leon

Proudly serving more than 10,000 residents and businesses throughout Nevada and Utah.

*Winter hours are November through April;  
Summer hours are May through October.*

*Summer hours: Ely office will be open from  
7 a.m. to 5:30 p.m. Monday-Thursday.  
Eureka office is 8:30 a.m. to 3:30 p.m.  
Monday-Thursday.*

### “Powering Your Future”

A Touchstone Energy® Cooperative   
*The power of human connections*

NV-40

# EPA’s Proposed Rule Will Raise Power Rates

Deseret Power, our power supplier, is celebrating 30 years of operating the Bonanza power plant. It was built to produce 400 MWs of power. In 2000, it was upgraded with a ruggedized rotor to increase its output to 458 MWs.

In 1978, six co-ops in Utah, Wyoming and Nevada came together and formed Deseret Power. The same year, concerned that unrest in the Middle East could choke off the world’s supply of natural gas, Congress passed the Powerplant and Industrial Fuel Use Act, restricting construction of new natural gas power plants and encouraging the use of coal as a fuel source.

I’m sure back then our board members felt they had a generation source for the next 60 years.

On August 3, the Environmental Protection Agency finalized regulations to limit carbon dioxide emissions from power plants. The regulations will dramatically reshape how America generates and uses electricity.

Cooperatives are local businesses. Co-op employees and directors live in the communities they serve, and they care about the members at the end of the line who will be footing the bill to comply with these regulations. According to the EPA’s own estimate, the rule would prematurely shut down more than

one-quarter of electric co-op coal-fired generation capacity.

The Clean Power Plan will cut carbon emissions from the power sector by 32 percent by 2030, compared with 2005 levels. The measure places significant emphasis on wind and solar power and other renewable energy sources. Each U.S. state has an emission-cutting goal assigned to it and must submit a proposal to the EPA on how it will meet the target.

The National Rural Electric Cooperative Association says the final rule still appears to reflect the fundamental flaws of the original proposal. It exceeds the EPA’s legal authority under the Clean Air Act. It will raise electricity rates for our country’s most vulnerable populations while challenging the reliability of the grid.

Any increase in the cost of electricity most dramatically affects those who can least afford it, and the fallout from the EPA’s rule will cascade across the nation for years to come.

Your board of directors and employees at Mt. Wheeler Power will continue to provide safe reliable electricity and fight for the lowest cost possible for you.

**Randy Ewell**  
General Manager

# Wells Rural Electric Company

## Board of Directors

F. Scott Egbert  
President

Gerald Anderson  
Vice President

Mary Wright  
Secretary/Treasurer

Jonathan Dahl  
Kirk Dahl  
Orlin Kidner  
Fred Montes de Oca  
Lois Nannini  
Jim Whited  
Bruce Widmer  
Howard Wright

## Director Emeritus

D. Vernon Dalton

### Carlin office:

1322 Chestnut Street  
P.O. Box 727  
Carlin, Nevada 89822  
(775) 754-6362

### Wendover office:

1706 West Butte Street  
P.O. Box 3699  
West Wendover,  
Nevada 89883  
(775) 664-2204

### Wells office:

1451 Humboldt Avenue  
P.O. Box 365  
Wells, Nevada 89835  
(775) 752-3328

### website:

[www.wrec.coop](http://www.wrec.coop)

NV-41

## CEO Message

The cost of everything has gone up dramatically over the last 75 years. Consider a few basic groceries that might be used to make breakfast. The national average price for bacon was \$0.38 per pound. The national average is now \$4.51 per pound. Eggs that were \$0.27 a dozen average \$1.97 per dozen. Coffee prices have increased nearly 5,000% from \$0.15 per pound in 1940 to a national average of \$7.43 per pound today.



During that same time period, electricity rose from a national average of a nickle to \$0.11 per kiloWatt hour (kWh). Locally, the increase in the price of electricity has been much smaller. Even after the rate increase that will become effective in October, Wells Rural Electric Company's retail residential rate will still be less than eight cents.

The cost to provide you with safe, reliable service continues to rise because of increasing government regulation and unfunded mandates. In addition to those rising costs, the Bonneville Power Administration, our wholesale power supplier, is also raising its rates. This increase in wholesale power costs is driving the pending rate increase. Work done to minimize the increase is detailed on page 8.

The percentage increase you will see on your residential bill will vary depending on your particular account and usage patterns. Tools to help you better understand how the rate increase will affect you will be provided over the next couple of months through Rate Proceedings in each community, on [www.wrec.coop](http://www.wrec.coop), in our offices and in future editions of Ruralite.

Wells Rural Electric Company (WREC) owners benefit from receiving hydro power from the Pacific Northwest's dams. Hydro is a renewable, highly efficient, affordable form of generation. In addition, WREC has reduced its internal costs through budget reductions, automation and innovation, reductions in the number of employees and employee benefit reforms. When combined with local efforts to control costs, hydro will help keep WREC's rates below both Nevada and US averages even after the October rate increase.

WREC has an excellent track record for providing safe and reliable electricity. We perform extensive preventative maintenance and act quickly during an outage. Power is available 99.94% of the time on average.

While rates are going up, the cheapest kWh is always the one you don't use. WREC's Board has made a conscious effort to design rates that collect fixed costs like debt service, depreciation, taxes, insurance, payroll and overheads through the basic service charge. The kWh charge then more accurately reflects the cost of energy so your employees can focus on helping you use less electricity through conservation and energy efficiency.

**Clay R. Fitch**  
Chief Executive Officer



Valley Electric  
Association, Inc.

A Touchstone Energy® Cooperative 

NV-42



**Assist our community for  
less than \$1 a month.  
Visit [www.vea.coop](http://www.vea.coop)  
to learn more.**

800 E. Highway 372  
P.O. Box 237  
Pahrump, NV 89041

**BOARD OF DIRECTORS**

**DISTRICT 1**      **DISTRICT 2**  
Peter Gazsy      Shiela Rau

**DISTRICT 3**      **DISTRICT 4**  
Rick Johnson      John Maurer

**DISTRICT 5**      **DISTRICT 6**  
Dave Lowe      David Dawson

**OFFICE PHONE**

800-742-3330 (within Nevada)  
or 775-727-5312, 8 a.m. to 5 p.m.  
Monday-Friday, except holidays

**AFTER HOURS & EMERGENCY**

We are here 24 hours a day,  
seven days a week for your  
emergency needs.

775-727-5312

Website: [www.vea.coop](http://www.vea.coop)

Email: [wmc@vea.coop](mailto:wmc@vea.coop)

## Letter From the CEO

### Optical Fiber Broadband Benefits Communities



At Valley Electric Association, Inc. (VEA), forward-thinking business initiatives play an integral role in our member-focused philosophy. When evaluating these initiatives, VEA not only considers the financial benefits to the cooperative itself, but also the economic and social impact on businesses and community members across southwestern Nevada.

As many members are aware, VEA is preparing to offer optical fiber broadband communications service within its service territory. To support this effort, VEA recently distributed surveys to all members, asking for their input on service options and possible programs.

More than 4,000 people returned the surveys, the majority of which were overwhelmingly supportive of the service. Almost 70 percent of the respondents stated they would switch to an optical fiber internet service if it were available through VEA. Much like they did when VEA was formed 50 years ago, communities are gathering together to support the development of a much-needed service at a level that other companies are unable or unwilling to offer.

All businesses and individuals receiving the service will experience the immediate benefits of reliable and fast optical fiber communications service provided by a trusted organization.

Students will be among the most significant beneficiaries. Online testing, which is vital to today's educational environment, will be more reliable and efficient. To support education beyond the classroom, VEA will supply the service free of charge to the Pahrump Community Library.

In addition, the service will promote economic development. According to studies conducted by the National Agricultural and Rural Development Policy Center, broadband adoption increases total employment, raises median household income and grows the number of businesses in a given area. A recent study conducted by the University of Colorado and Carnegie Mellon University found that fiber-optic connections can add thousands of dollars to the selling price of a home.

The service will also directly improve safety in our communities by increasing the communication abilities of local emergency services. Optical fiber broadband communications is truly a service that can improve all aspects of life in southwestern Nevada.

As a member-owned and member-focused cooperative, VEA will always pursue valuable projects that strengthen the cooperative while improving the quality of life for the communities we serve.

Until next month,

**Thomas H. Husted, Chief Executive Officer**



## Kittitas County Public Utility District No. 1

1400 Vantage Highway  
Ellensburg, WA 98926  
(509) 933-7200  
(24-hour phone service)  
Office hours: 8:30 a.m. to 4 p.m.  
Monday through Friday

### Commissioners

Roger C. Sparks  
Paul Rogers  
Shan Rowbotham

### General Manager

Matt Boast

### Assistant General Manager

Brian Vosburgh

Please visit our website to view  
all approved board minutes:  
[www.kittitaspud.com](http://www.kittitaspud.com)

The Board of Commissioners  
meets the last Tuesday of each  
month in Building B.

WA-43

## Power Rate Update

In August, the Bonneville Power Administration announced a wholesale power rate increase of 7.1 percent and transmission rate increase of 4.4 percent for fiscal years 2016 and 2017. While the increase for individual utilities varies throughout the region, the overall expected increase to the Kittitas PUD is 5.86 percent, effective October 1, 2015.

Kittitas PUD is committed to providing safe and reliable electric service at a reasonable cost, while promoting affordable energy efficiency and meeting the essential energy needs of our customers. Unfortunately, the PUD does not own generation facilities. Instead, the PUD buys the majority of its power supplied to customers from BPA. Despite the lack of district-owned generation, electric rates have consistently been lower than national averages, as demonstrated below.



The PUD is reviewing revenue requirements and actively researching how the BPA rate increase will affect our customers. The Kittitas PUD Board of Commissioners' public meetings are held the last Tuesday of each month.

For additional information regarding BPA's rate increase, please visit our website, [www.kittitaspud.com](http://www.kittitaspud.com).



Member-owned since 1921

# Ohop Mutual Light Co.

34014 Mountain Highway E.  
Eatonville, WA 98328

Phone: (253) 847-4363  
Night troubles: (253) 847-4363

Email: [office@ohop.coop](mailto:office@ohop.coop)  
[www.ohop.coop](http://www.ohop.coop)

## Board of Directors

President Mel Cox  
Vice President Frank Hoffman  
Sec./Treasurer Louie Mettler  
Director Jerry Walter

## General Manager

Isabella Deditch

WA-49

# Fall is Almost Upon Us

## Dear Members:

Summer is drawing to a close. I hope you had time to enjoy the warm sunny days. In some cases, it seemed almost a little too much. But like someone once said, the good thing about the weather here is if you don't like it, it will change soon.

## Watch for Back-to-School Kids

September always brings the start of fall colors and the beginning of school. Drivers should take precautions around schoolchildren.

Did you know that more than 25 children are killed every year while getting on or off a school bus—some even while waiting at the bus stop?

Please take extra caution around areas where there are children and:

- Use care when backing out of a driveway.
- Keep an eye out for children walking to and from a bus stop.
- Slow down in areas where children are walking in the street and playing or congregating near bus stops, especially in the morning hours when it may still be dark.
- Be alert. Children who are running late for the bus may run into the street without looking.
- Watch for flashing yellow lights on the school bus. Slow down and be prepared to stop. Red flashing lights mean motorists must stop until the red lights stop flashing, the extended stop sign is withdrawn and the bus starts moving again. Unless there is a median, oncoming traffic also must stop.

I hope you all have great end of summer celebrations and family gatherings as we look forward to the beautiful, cooler days of fall.

**Isabella Deditch**  
General Manager





**TANNER ELECTRIC**  
Cooperative

45710 SE North Bend Way  
P.O. Box 1426  
North Bend, WA 98045-1426  
Telephone: (425) 888-0623  
Toll-free: (800) 472-0208  
www.tannerelectric.coop

**General Manager**

Steve Walter

**Chief Financial Officer**

Rob Carr

**Operations Manager**

James Anderson

**Board of Directors**

President Ed Stephenson

Vice President Julie Fromm

Treasurer Susan Serrette-Egan

Secretary Mike Hodge

Roger Guay

Jeff Gillette

Kendel Lyman

Paul Bay

Mark Dilger

*An electric utility owned  
by those we serve in:*

North Bend

Ames Lake

Anderson Island

*Tanner Electric Cooperative is an  
equal opportunity provider and  
employer*

WA-50

## The Value of Electric Cooperatives

### *The co-op business model makes all the difference*

There are three main types of electricity providers in the U.S. Investor-owned utilities serve primarily densely populated areas. Municipal-owned utilities also serve densely populated cities from large areas such as Los Angeles to the small such as Robersonville, North Carolina. And of course, there are rural electric cooperatives like Tanner Electric Cooperative that serve less populated parts of the country.

In the utility business, population matters a lot. Since the cost to serve any given area is similar, the more customers you have allows you to spread the costs among more people to keep rates lower. At least that is the theory.

Municipal-owned utilities have the greatest density—48.3 customers per mile of line, generating an average of \$113,301 of revenue. IOUs follow with 34 customers per mile of line, while generating average revenues of \$75,498. Finally, electric co-ops average 7.4 members (not customers, but members) per mile of line, bringing in an average of \$14,938 of revenue per mile.

Tanner Electric Cooperative serves an average of 12.5 members per mile of line, generating an average of \$30,300.

If I were to give this data to any business school in the country and ask—based on this information—what the rates should be for each of the utilities, the answer would likely be a rate 7.5 times greater than municipal-owned utilities and five times higher than IOUs. But that is not the case. Why not?

It has to do with the co-op business model. IOUs are owned by outside investors who may or may not be users of the electric utility they own. These companies' stocks are traded on Wall Street, and those investors demand a return on their investment. This drives up the price their customers pay.

Many municipal systems charge rates that generate a profit for their cities to help pay for other services.

Tanner Electric Cooperative operates on a not-for-profit basis. Of course, we are a business and must generate enough revenue to cover costs—the largest being the purchase of wholesale power. But we don't have to charge rates to pay outside stockholders.

Since our members are our owners, we can provide safe, reliable and affordable power to you. That is just another way your co-op brings you value.

**Steve Walter**

**General Manager**



## Parkland Light & Water Company

Owned By  
Those We Serve

12918 Park Ave.  
P.O. Box 44426  
Tacoma, WA 98448-0426  
(253) 531-5666

### BOARD OF TRUSTEES

Gary Grazzini - President  
Janet Detering - Vice President  
Elaine Walter - Secretary  
Charles Nelson - Treasurer  
Gary Hauenstein - Public Relations

### GENERAL MANAGER

Mark Johnson

*Incorporated in 1914—  
The country's oldest  
mutual cooperative*

**FOR UTILITY EMERGENCIES 24/7,  
CALL (253) 531-5666**

WA-52

## Seven Steps to a Water-Efficient Yard

**1. Plan first, plant second.** Draw a scale picture of your home and yard. Consult a professional landscape architect, master gardener or local nursery for advice. This allows you to implement water-efficient yard principles to save you time and money.

**2. Smaller lawns.** Lawns are the largest water user in most yards. Before planting, contact your local nursery to determine the proper variety of grass to use. Only plant lawns where they are truly needed.

**3. Soil improvement.** Determine your soil type and nutrient needs. Adding organic matter will improve overall soil quality and reduce water and fertilizer needs.

**4. Water wisely.** Use efficient watering systems such as sprinklers for grass and drip or spray systems for shrubs and ground cover.

**5. Use mulch.** Place mulch over soil to cool the soil, reduce weed growth, slow erosion and minimize water evaporation.

**6. Right plant, right place.** Check for information on drought-resistant plants appropriate to our climate. Plants with similar water needs should be placed close together to maximize water efficiency and minimize cost.

**7. Maintenance.** Regularly weed your yard since weeds compete for the same water that your grass and plants use. Regular maintenance will keep your water bill low and save you time.



495 E. Columbia River Highway  
PO BOX 216

Clatskanie, Oregon 97016  
(503) 728-2163 Office  
www.clatskaniepud.com

Office Hours: 8 am to 5 pm  
Monday through Friday

Please call to report outages  
(503) 728-2163

Automated Payment Center  
1-855-430-0765

#### BOARD OF DIRECTORS

Don Hooper, President  
Bob Wiggins, Vice President  
Merle Gillespie, Secretary  
Stephen D. Petersen, Treasurer  
Linda A. Hooper, Director

#### GENERAL MANAGER

Marc Farmer

#### CPUD \$10 Bill Credit Drawing

Account #00100108-11  
If this is your account number,  
please call the office to claim your  
prize. Congratulations!

## Community Calendar

#### September 7: Labor Day

CPUD office closed

#### Labor Day North Coast Big Band

**Concert & the kickoff barbecue of the  
Clatskanie Arts Commission 2015-16**

**Performing Arts Series**, 1-4 p.m., in  
Clatskanie City Park.

#### September 23: Clatskanie PUD Board

**Meeting** Workshop at 5:30 p.m., followed  
by regular board meeting at 7 p.m.

#### September 26: Clatskanie Health & Safety Fair 10 am to 2 pm

Please see the CPUD website for more  
information about the fair.

**\*The September CPUD Meeting will be  
held on Wed., September 23, 2015.**

OR-60

I know we have warned you about scam phone calls before, but since we recently had one of our Clatskanie customers alert us that they received a scam phone call, I felt it wise to remind everyone of the danger. The scammers claimed to be from the utility and tried to get them to pay their bill and give them customer information, but when questioned they said they represented PacifiCorp.

Upon more questioning they hung up and then blocked further attempts to contact them. When the scammers asked the customer for their account number, the customer alertly said that if they were really their utility, wouldn't they already know that? These scammers have been working this angle for quite some time now, but are successful at getting some customers to give them information and pay money. Please call us at our local office if you receive any calls about your utility bill to make sure it is really Clatskanie PUD that you are talking to. We want to make sure you and your information are safe.

At the August 19th Board of Directors meeting, the board heard a staff report about the effects of the BPA rate increase in our wholesale power rates and our transmission rates. The wholesale power rate from BPA will increase by 7.2% and the transmission rate will increase by 4.4%. As we stated last year, these increases have been scheduled by BPA for two years and we knew they were coming, we just didn't know the final number until recently. Staff will be proposing a 7.6% rate increase to the Board, which would be an increase of \$5.64 per month for the typical residential customer.

The BPA rate increase needs to be passed through, as we are not able to absorb the increase due to water levels over the dam being down to 88% of normal this year. This low water year, combined with a very mild winter, has reduced revenues below our projections. The Board will discuss the rate increase in their workshop meeting and then vote on the proposed rate at the September 23rd Board Meeting.

Staff has already begun the exercise of identifying cuts to the 2016 budget as we anticipate a 90% of average water year due to the continued effects of El Nino weather conditions. We budgeted for a 95% of average water for 2015, but the level fell to 88% of average. Hopefully by cutting the budget to 90% we can better prepare for low water next year. This will likely come in the form of delaying some capital projects, not filling a vacant position, and other further reductions in expenses.

I would also like to note the retirement of Debbie Throop who served as our Manager of Administration and Finance. We wish her well in her retirement and want to express our gratitude for her 25 years of hard work, dedication, and effort. Not only to Clatskanie PUD, but also in the communities we serve as she was very active in many organizations over the years. Barb Haas has been promoted to replace Debbie as the new Finance Manager, and Sarah Rossi has been promoted to Customer Relations & Services Manager. Congratulations to all!

Marc Farmer, General Manager





## Board of Directors

### Chairman

Robert L. Beans Sr.,  
Mountain Village

### Vice Chairman

Charlie Curtis, Kiana

### Secretary

Phyllis Clough, Old Harbor

### Treasurer

Helena R. Jones, Ambler

### Directors

Peter Demoski, Nulato  
Fred Sagoonick, Shaktoolik  
Walter G. Sampson, Noorvik

board@avec.org

### Communities Served

Alakanuk	Mt. Village
Ambler	New Stuyahok
Andreafsky	Nightmute
Anvik	Noatak
Bethel	Noorvik
Brevig Mission	Nulato
Chevak	Nunapitchuk
Eek	Old Harbor
Ekwok	Pilot Station
Elim	Pitkas Point
Emmonak	Quinhagak
Gambell	Russian Mission
Goodnews Bay	St. Mary's
Grayling	St. Michael
Holy Cross	Savoonga
Hooper Bay	Scammon Bay
Huslia	Selawik
Kaltag	Shageluk
Kasigluk	Shaktoolik
Kiana	Shishmaref
Kivalina	Shungnak
Kobuk	Stebbins
Kotlik	Teller
Koyuk	Togiak
Lower Kalskag	Toksook Bay
Marshall	Tununak
Mekoryuk	Upper Kalskag
Minto	Wales

### Alaska Village Electric Cooperative, Inc.

4831 Eagle Street  
Anchorage, AK 99503  
(907) 561-1818  
(800) 478-1818



AK-105

## Nominations Open for AVEC Board

The bylaw amendments adopted by the membership this year have changed the way board members are elected. Instead of being elected by delegates at the annual meeting in Anchorage, they will instead be elected by you, the members, via a mail-in ballot. To implement that process, the AVEC Board has appointed a nominating committee of seven individuals who served as delegates at the 2015 annual meeting.

The nominating committee will meet telephonically during the next several weeks and develop a list of candidates for the two board seats that will be vacated in 2016. Those seats are held by Walter Sampson of Noorvik and Fred Sagoonick of Shaktoolik.

The nominating committee is seeking nominations for candidates. According to the bylaws, "No member shall be eligible to become or remain a Director ... who is not a bona fide member of the Cooperative or in good standing or who is in any way employed by or financially interested in a competing enterprise or a business selling electric energy or supplies to the Cooperative. When a membership is held jointly, either one, but not both, may be elected as Director, provided, however, that neither shall be eligible to become or remain a Director...unless BOTH shall meet the qualifications hereinabove set forth."

If you are interested in running for the board of directors or wish to nominate another individual, please send a letter of nomination addressed to the nominating committee and include name, address, account number or telephone number of the potential candidate and a brief statement describing why the individual is running for the position. The nomination may be sent by mail to our address in Anchorage or by email to amurphy@avec.org.

The nominating committee is charged with the duty "to nominate candidates from the widest possible geographical distribution" and will prepare a slate of two or more candidates for each board vacancy. Directors are elected at large, so the two candidates with the highest number of votes will be elected to the board unless both candidates come from the same community. Since the bylaws also dictate that there shall not be more than one director from the same community, the candidate with the most votes from that community would be elected and the candidate with the highest votes from another community would be elected to the second seat.

We expect the nominating committee to complete its task late this year, and ballots will be mailed to all members of record in early February 2016. Ballots must be returned by late March. The results will be announced at the annual meeting April 6, 2016.

Until next time,

Meera Kohler  
President and CEO





65 S. Roop St.  
Susanville, CA 96130  
Phone (530) 257-4174  
Fax (530) 257-2558  
www.lmud.org

**BOARD OF DIRECTORS**

President Richard Vial  
Vice President Fred Nagel  
Treasurer Jay Dow Jr.  
H.W. "Bud" Bowden  
Jess Urionaguena

**STAFF**

**General Manager**

William H. "Bill" Stewart, CPA

**Assistant General Manager**

Doug Smith

**Electric Operations Manager**

Cort Cortez

**Business Office Manager**

Keri Richards

**Energy Services Manager**

Theresa Phillips

**IT Operations Technician**

Nick Dominguez

**Executive Assistant**

Karen Rollings

**In case of an outage:** If your electricity is off for more than a few minutes, call 257-4174. Office hours are 8:30 a.m. to 4:30 p.m., Monday through Friday. After-hours and weekend calls are answered by a local service and immediately forwarded to standby personnel.

*The board meets at 5:30 p.m. the fourth Tuesday of each month.*

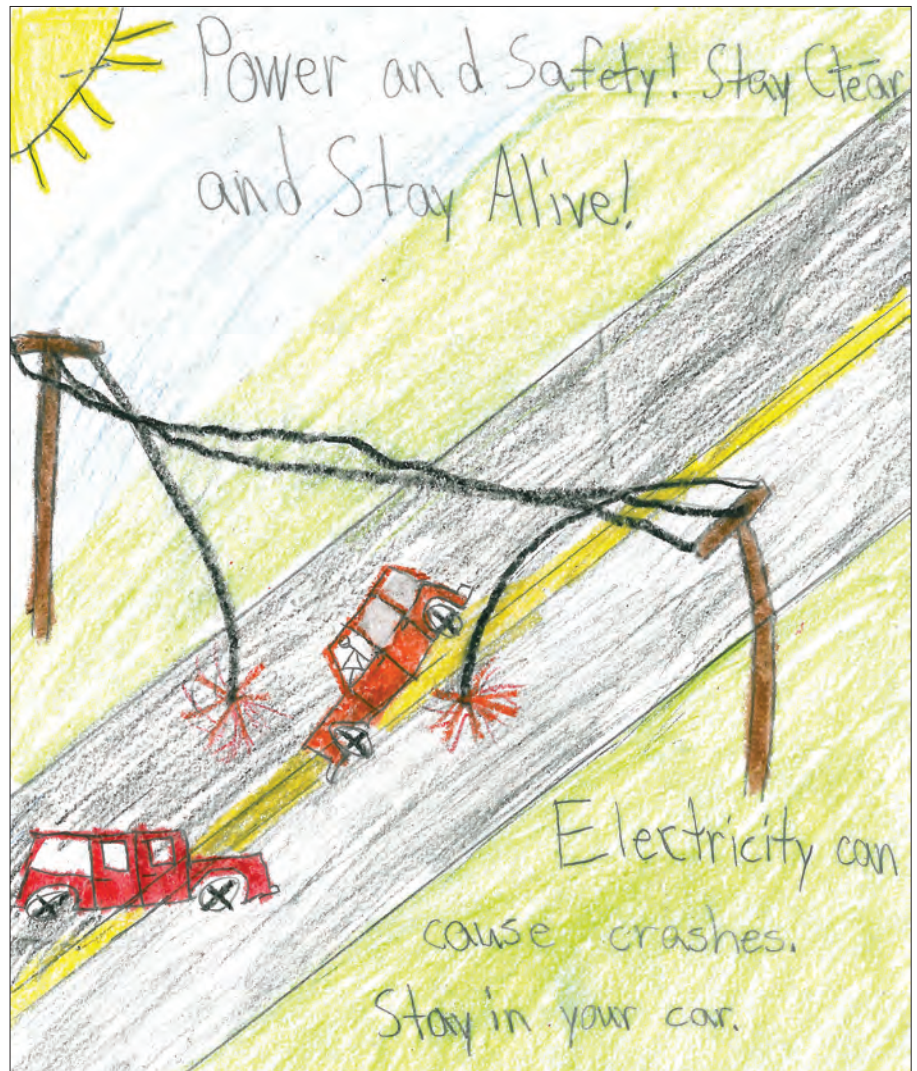
CA-106



**David Magana—Fourth grade, Juniper Ridge Elementary**

**September Student Art Safety Poster**

*We will run a winning poster every month on the back page for the next year.*





## Lincoln County Power District No. 1

HC 74, Box 101  
Pioche, NV 89043

Phone: (775) 962-5122  
Toll free: (888) 649-3814

Email: [lcpd@lcpd1.com](mailto:lcpd@lcpd1.com)

### DIRECTORS

President Ed Wright  
Vice President Lee Mathews  
Bob Rollins  
Mike Fogliani  
Dylan Frehner  
Secretary David Luttrell

### GENERAL MANAGER

David Luttrell

Board meets the  
second Monday  
of each month



### MISSION STATEMENT

*To construct, operate and maintain  
a system which will provide  
our customers with electric service  
in the most economical and  
efficient manner consistent with  
sound business practice.*

NV-107

## A Busy Summer at LCPD No. 1

As always, we have been busy at Lincoln County Power District this summer. First, however, I want to say that we at the district enjoy summer just like everyone else. Time outside with family and friends cannot be beat. However, summer also makes us nervous because it brings with it the possibility of high winds, lightning and wildfire.

These storms can create significant problems for rural overhead power lines. So far this year, I am pleased to report we were not affected by wildfires and have had minimal power outages caused by wind or lightning. The few we did have were isolated to small groups of customers. Although we did have winds and lightning this summer, it was not as bad as years past.

In addition, our efforts to “harden” the electric system are beginning to pay off. By harden, I refer to projects to make the electric system better able to withstand storms. Pole change outs, crossarm change outs, tree trimming, right-of-way clearing, installation of lighting shield wires and sectionalizing devices, and using heavier class materials are some of the projects we have done. This summer, we changed out 30 poles and crossarms on one of our distribution lines, and cleared nearly 5 miles of right of way.

We also have been busy at Lincoln County High School in Panaca. The school district has been planning a project for several years to improve the track and football field area. The project required us to relocate the primary overhead power line on Edwards Street. We placed the circuit feeding the high school complex underground, making room for their plans and significantly improving the visual aesthetics in the area. We appreciated working with Mike Anderson from the school district staff to complete this complex project.

This past August, we spent considerable time working with Union Pacific Railroad and its construction contractor to energize the underground circuit between Caliente and the Nevada-Utah state line. We are now working on line extensions to individual customers in the Acoma, Barclay and Crestline areas of Lincoln County. The first extension completed was to Harold Wittwer of Acoma. We completed the extension and began service to him in August. Welcome to the power district, Harold. As of this writing, work continues to extend facilities in the Barclay area.

In other news, we hired a new operations technician. Pat Gloeckner, the operations manager for numerous years, will retire in a few years. To fill this void, the position of operations technician was created and Richard Wilson, who graduated with an engineering degree from Boise State University in December, was hired. Richard will have big shoes to fill when Pat retires, but he is off to a good start. If you see Richard and his family out and about, be sure to welcome them to the community.

Earlier this year, I wrote about the NRECA Youth Tour and the great opportunity this event provides. After completing the youth tour in June, Janel Meldrum, one of the district's student representatives to the event, was selected to represent all of Nevada at the NRECA Youth Leadership Council in Washington, D.C., in July. While there, she was required to prepare and give a speech. Based on her speech she was selected as the first runner up among the 44 finalists. Way to go, Janel.

—David Luttrell, General Manager



A Touchstone Energy® Cooperative   
The power of human connections®

698 12th St. SE Suite 210  
Salem, OR 97301

(503) 585-9988  
www.oreca.org

#### OFFICERS

Dave Markham, President  
Christopher Seubert,  
Vice President  
Robert MacPherson,  
Secretary/Treasurer  
Alicia Bonesteele,  
Exec. Committee At-Large  
Bob Durham,  
Exec. Committee At-Large  
Roman Gillen,  
Immediate Past President

#### EXECUTIVE DIRECTOR

Ted Case

#### LEGISLATIVE REPRESENTATIVE

Rachel Kloor

#### OREGON ELECTRIC CO-OPS

Blachly-Lane Electric Co-op  
Central Electric Co-op  
Clearwater Power Company  
Columbia Basin Electric Co-op  
Columbia Power Co-op  
Columbia Rural Electric Co-op  
Consumers Power Inc.  
Coos-Curry Electric Co-op  
Douglas Electric Co-op  
Harney Electric Co-op  
Hood River Electric Co-op  
Lane Electric Co-op  
Midstate Electric Co-op  
Oregon Trail Electric  
Consumers Co-op  
Salem Electric  
Surprise Valley Electrification  
Umatilla Electric Co-op  
Umpqua Indian Utility  
Wasco Electric Co-op  
West Oregon Electric Co-op

OR-400

## Case in Point

Before school came back in session, my wife told me she was going to shop for the kids' supplies. They needed pencils, notebooks and, of course, the coolest new backpacks. I told her that as long as she was shopping, she also should pick up a year's supply of water and 1,000 AA batteries.

Welcome to the new world of the Cascadia earthquake.

As this month's feature story points out, the residents of the Pacific Northwest are getting a triple dose of the Cascadia subduction zone. No one is panicking, but when experts proclaim a 9.0 earthquake off the Northwest coast will be the most calamitous natural disaster in North American history ... well, you have our attention.

No one in the electric utility industry is hiding under a table, either. As the cover story attests, electric cooperatives and the Bonneville Power Administration are working diligently to plan for the unfathomable.

Coos-Curry Electric Co-op not only is taking steps to make sure its infrastructure can withstand an earthquake, it is helping educate coastal residents how to prepare for an earthquake. The co-op knows it will take a big hit, but with careful planning, it is minimizing the impact the best it can.

For its part, BPA has devoted considerable resources to disaster planning. As one BPA official told me, "We are agnostic about what type of disaster it is. Our job is to be ready."

We do not know the time or day that the Cascadia subduction zone will shift and set off a chain reaction of destruction. It is a risk we take living in a place with such spectacular natural beauty. I think it is worth the risk. But the threat does cross my mind as I send the kids off to school with their cool new backpacks. They are loaded with supplies, ready to take on the rigors of elementary school.

Perhaps I will not see Cascadia in my lifetime, but it is highly likely they will. My wife tells them to make good choices. I tell them to take extra water. We have plenty in stock.



#### Ted Case

Executive Director

## BOARD OF DIRECTORS

Billy Adams, President  
Ryall Stewart, Vice President  
Joel Carlisle, Secretary  
Harold Burdick, Treasurer  
Paul Elmore  
Belinda Hepler  
Michael Machado

## GENERAL MANAGER

Kevin Short

AZ-56 **Postmaster:** Send address changes to Currents, 5605 NE Elam Young Pkwy., Hillsboro, OR 97124

### EMPLOYEE ANNIVERSARIES

#### September and October Congratulations!

- ▶ Scott Davies ..... 11 years
- ▶ Michael Gervais ..... 3 years
- ▶ Laura Manseau ..... 3 years
- ▶ Paula Ruiz ..... 5 years

### IMPORTANT DATES

- ▶ Labor Day (co-op office closed) ..... September 7
- ▶ Washington Youth Tour deadline ..... October 16
- ▶ Daylight saving time ends ..... November 1

## Need Help With Your Utility Bills?

CAP Riverside/HEAP Program  
Anza Community Hall  
Wednesday, September 16  
9:30 to 11 a.m.

### BRING COPIES OF:

- ▶ Proof of household income
- ▶ Current electric and propane bills
- ▶ Proof of U.S. citizenship
- ▶ Picture ID for applicant
- ▶ Any disconnect/urgent notices (if applicable)
- ▶ Food stamps notice of action (current)

For application information, visit  
[www.capriverside.org](http://www.capriverside.org) or [www.anzaelectric.org](http://www.anzaelectric.org).

## A Message from the Manager

# It is Time to Begin Again

There's a traditional children's song that involves the misadventures of old Michael Finnegan. This tune goes on to describe Mr. Finnegan's problems, which seem to never end. At the conclusion of each verse the singer instructs everyone to begin again.

As an old(er) Irishman, I'm here to tell you this isn't necessarily the Luck o' the Irish. We frequently do much better than Finnegan.

In our local community, we're nearing the end of a verse in our song. It's time to begin again. This doesn't mean we've lost something, or that things are deteriorating. It just means we've rounded a corner, and we have the opportunity for a fresh start. In fact, optimists would say we get this opportunity with every new sunrise. Today is a new day.

Those of us fortunate enough to have attended our Annual Membership Meeting in July met such an optimist in our keynote speaker, Michelle Wulfestieg. Her story is an inspiration—an exhortation to keep going, to keep trying. To see this for yourself, visit Michelle's website at [www.allwehaveistoday.com](http://www.allwehaveistoday.com). We also posted a video of her speech on our website at [www.anzaelectric.org](http://www.anzaelectric.org).

Our new beginning is full of anticipation. We can pick up the threads of our community and begin to weave a new story.



Kevin Short

Our independence offers us opportunities to improve and excel.

We make our own future; we are the masters of our shared destiny.

It's time to work together to achieve our goals. It won't be easy. Sometimes it seems as if we're blocked at every turn by negative thinking and obstructions to our progress. Many times, it's easier to give in and give up, accept the status quo. However, I believe the only way to achieve the things that will benefit

our community the most—economic development, better jobs, improved infrastructure—is through communitywide cooperation. This is the very essence of the cooperative model.

Despite tremendous personal challenges, Michelle is a shining example of perseverance. Mr. Finnegan's continuing saga of endless, yet silly, troubles tells us to begin again.

Ahead of us are tests and trials we must work through together. I believe we are up to the test. It's time to act as one for the common good, to build a future that's worth living. We can prove our independence as a cooperative and a community is the best thing for us all.

## No. 29568-001

If this is your account number, contact the AEC office and claim your \$25 bill credit.

## ANZA ELECTRIC COOPERATIVE, INC.

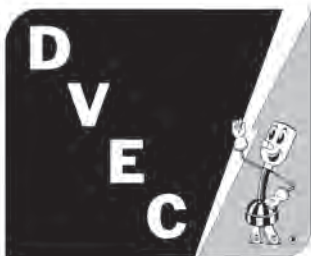
P.O. Box 391909 • Anza, CA 92539

Phone: (951) 763-4333 • Fax: (951) 763-5297 • [aec@anzaelectric.org](mailto:aec@anzaelectric.org) • [www.anzaelectric.org](http://www.anzaelectric.org)  
Our crew is on standby 24 hours a day. To report an outage or other service problem, please call (951) 763-4333.



Touchstone Energy®

The power of human connections



## Duncan Valley Electric Cooperative Inc.

379597 AZ 75  
P.O. Box 440  
Duncan, AZ 85534  
Phone: (928) 359-2503  
Fax: (928) 359-2370  
www.dvec.org

### BOARD OF DIRECTORS

Johnnie Frie  
*President*  
Tom Powers  
*Vice President*  
Judy McKinley  
*Secretary/Treasurer*  
Frank Downs  
Vance Lee  
Suzanne Menges  
Leon Reynolds  
Dustie Robinette

### ADMINISTRATION

Steven Lunt  
*CEO*

### BOARD MEETINGS

September 21  
October 12  
November 10

*Generally the third Monday of the month*

**Owned By Those We Serve—  
Incorporated June 1947**



AZ-143 **Postmaster:** Send address changes to Currents, 5605 NE Elam Young Pkwy., Hillsboro, OR 97124

### CEO's Message

# Silver Linings in the Monsoon Clouds



**Steven Lunt**

From the afternoon of August 17 until the afternoon of the 18th, we experienced one of our longest widespread outages in many years.

In the Duncan area, we had severe winds and flooding that either brought down poles or sent debris cutting through power lines. Power was out from Duncan north to the Apache Grove area, and east through Franklin and Virden out to Red Rock.

We had to replace several poles that carry our Virden, Franklin and Red Rock circuits away from the substation. We also had to splice wire, exchange transformers, and replace poles and wire in several other locations.

As from many tough experiences, there were some silver linings. I speak for all of the employees as I express thanks to those of you who were patient and understanding of the situation. Many of you called and expressed a desire to help. With rare exception, callers sympathized with our crews working out in the elements trying to fix a problem that was not of their doing.

We are grateful that members understand that when they are out, we are out. I use the term "out" with two meanings. The first is that when the power is out, our crews are out working. Second, because our employees are your neighbors, they also are without power.

In this extended outage, most of our employees did not have the chance to check on any storm damage to their homes, or run home to check on freezers or well pumps.

Instead, they went straight to work and worked straight through.

All of us here are thankful for friends and neighbors who checked on things for us.

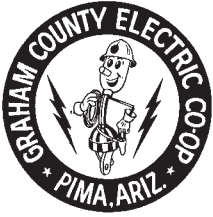
It was most heart-warming to witness an outpouring of support from our community.

Here are a few examples.

- As the night wore on, an employee's spouse made a food run so the work crews would have the fuel they needed.
- A co-op member who works for an electrical contractor made arrangements to get extra workers and equipment here quickly.
- Employees of neighboring cooperatives checked to make sure we had enough material and equipment.
- In the twilight hours before dawn, a former employee knew that body energy would be running low, and brought water and snacks to keep the crews going.
- As night turned into day, a director made and brought us breakfast. Another director made a drive to get some material and equipment from another co-op.
- We received calls from county and town employees offering help.
- At the end of the day, another member brought us doughnuts that were quickly consumed the next morning as we had an employee meeting to make plans for what still needed to be done.

Who can ask for better neighbors?

It is said that a person's character is revealed when in a crisis. I believe the same can be said of a community. Thank you, members of our cooperative community, for showing your character. Your forbearance and willingness to help are silver linings on a stormy day.



P.O. Drawer B  
Pima, AZ 85543

(928) 485-2451  
Toll free: (800) 577-9266  
Fax: (928) 485-9491  
www.gce.coop

**Graham County Electric Board of Directors:**

President Reuben McBride  
Vice Pres. Gene R. Larson  
Secretary Tommy Clonts  
Jim Bryce  
Chris Claridge  
Mark Claridge  
Dennis Jacob  
Robert Reed  
Gerald Schmidt

**Graham County Utilities Board of Directors:**

President Jeff B. Larson  
Vice President Dennis Jacob  
Secretary Mike Crockett  
Jim Bryce  
Bob Brown  
Tommy Clonts  
Gene R. Larson  
Larry H. Morris  
Gerald Schmidt

**General Manager:**

Steve Lines



AZ-145 **Postmaster:** Send address changes to Currents, 5605 NE Elam Young Pkwy., Hillsboro, OR 97124

**Manager's Message**

# Impact of the Clean Power Plan

As detailed in the Arizona Republic, the affordability and reliability of your electricity has been threatened by federal regulations. "The federal Environmental Protection Agency is expected to march the nation's energy consumers into new territory on the frontier of controlling carbon emissions," the editorial board wrote in a July 26 article. "Representatives of the big power companies are flooding Washington, D.C., in a desperate effort to mitigate the impact of the EPA's venture, known as the Clean Power Plan."

You acted along with nearly 40,000 Arizonans by sending messages to EPA about the proposed plan. It is clear your engagement made a difference. In reaction to concerns of Arizonans statewide, EPA took your comments to heart and made changes in its final rule proposal released August 4.

Under the draft plan, Arizona faced the most ambitious goal to reduce carbon. Debates between environmental activists and politicians about its implications heated up. But few looked at the EPA's new carbon plan with quite the riveted sense of alarm as small utility companies that serve rural customers. "The people throughout rural Arizona that we serve will be screwed more than anybody else in the country," Patrick Ledger, CEO of the Arizona Generation and Transmission Cooperatives, told the Environment and Energy news service.

AEPCO, serving some 500,000 rural customers, operates one natural gas-fired and two coal-fired units at the Apache Generating Station in southeastern Arizona. One of the coal-fired units is scheduled to convert to gas in 2018 to accommodate recent EPA rules governing haze. But under the draft plan, the co-op would have been forced to shutter its coal-fired unit altogether, stranding around \$230 million in recent upgrades and investment. In addition, the co-op would have to take on between \$450 million and \$600 million in additional debt to rebuild capacity to serve its customers. All told, that would push the price of the energy Ledger's cooperative sells to distribution cooperatives to 38 percent above market rates. That, said Ledger, would spell the end. "We will be put out of business," he told the editorial board. "We go into bankruptcy."

Ledger and his colleagues understand coal's future is limited, so they lobbied EPA to give the nation's 100 smallest utilities more flexibility in meeting carbon goals.

We are thankful for the support we received from our national, state and local elected officials, as well as individuals concerned about the effect these rules will have on rural Arizona. We specifically would like to thank Arizona Sens. John McCain and Jeff Flake. On July 8, they stated the facts and asked the hard questions about the proposed Clean Power Plan in a letter to Gina McCarthy, EPA administrator; Tom Vilsack, U.S. Department of Agriculture secretary; and Shaun Donovan, director of the Office of Management and Budget.

Although EPA has made some changes with the August 4 ruling, we still have a lot of work to do to ensure Arizonans are protected. Our concerns about the federal overreach embodied in the EPA approach and the effect on the reliability and affordability of electricity for co-op members remains at the forefront of our minds as we continue to analyze the more than 4,000 pages accompanying the final rule. We shall see how the new ruling affects G&Ts. Look for more information in the coming months. Thanks again for your continued support!



**Steve Lines**

## FLORIDA Currents

Members acknowledge that \$3.96, plus actual postage, is the cost to publish 12 issues a year of **Florida Currents** (USPS-8300). Published by Ruralite Services Inc., 5605 NE Elam Young Pkwy., Hillsboro, OR 97124—a not-for-profit Oregon cooperative corporation—the magazine serves the communications needs of consumer-owned electric utilities in Florida. Preferred Periodicals postage paid at Hillsboro, OR 97123 and at additional mailing offices.

**Postmaster:** Please send address corrections to 5605 NE Elam Young Pkwy., Hillsboro, OR 97124.

### HOW TO CONTACT FLORIDA CURRENTS

**Have a problem receiving your edition of Florida Currents?** Utility members should contact the local utility office listed on the back cover. Nonmembers should contact Ruralite Services, 5605 NE Elam Young Pkwy., Hillsboro, OR 97124; (503) 718-3717; email [info@floridacurrents.com](mailto:info@floridacurrents.com).

**Subscription services:** Nonmember subscriptions \$12 (U.S.) per year; \$25 (foreign) per year. Prepayment required. Allow 4 to 8 weeks for first issue. Be sure to identify which local edition you want to receive. Order online at [www.floridacurrents.com](http://www.floridacurrents.com).

**Extra copies:** \$2 each, pre-payment required. Supply is limited. Identify edition, month and year. Contact Ruralite Services.

**Reprint permission:** Direct all requests to Ruralite Services.

### MANUSCRIPTS AND PHOTOGRAPHS

Please do not send unsolicited materials. If interested in writing for Florida Currents, query first. Include a self-addressed stamped envelope for writer's guidelines. Address requests and queries to Ruralite Services.

### DISPLAY ADVERTISING INQUIRIES

Contact Jessah Willis  
National Country Market  
611 S. Congress Ave. Suite 504  
Austin, TX 98704  
(800) 626-1181 or (512) 441-5200  
[www.nationalcountrymarket.com](http://www.nationalcountrymarket.com)

### PRINTED IN FLORIDA

Trend Offset Printing Services  
10301 Busch Drive North  
Jacksonville, FL 32218

© 2015 Ruralite Services Inc. All rights reserved. Reproduction in whole or in part without written permission is prohibited.



## Manager's Message

# EREC Online Helps Save Money

Costs are rising. While there is not much we can do about that, there is a lot we can do to reduce the amount of energy we use, which will save us money. Escambia River Electric Cooperative's website contains valuable information on energy conservation, how energy is used in your home, costs associated with different kinds of lighting and appliance use, and much more.

The Home Energy Calculator helps you learn more about your home's energy use. You can view useful details about your estimated use, seasonal factors and cost-saving recommendations. The Home Energy Calculator is free and takes fewer than 10 minutes to complete.

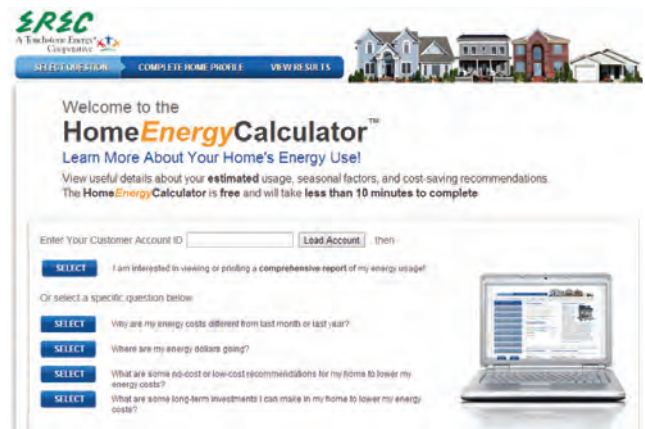
The Energy Savings section of [www.erec.com](http://www.erec.com) also has links to How to Save videos on YouTube, with topics ranging from programmable thermostat installation to pool pump preventative maintenance and everything in between. EREC's website includes information about the Energy Efficiency Financing Program. This loan program helps members finance energy-efficiency improvements such as heating and cooling systems, insulation, sealing, ventilation, water heating, and windows and doors.

I encourage you to take a few minutes to check out [www.erec.com](http://www.erec.com). These are only a few of the beneficial tools that can be found in the energy section of our website to help you save money on your electric bill by improving energy efficiency.

Although these days our dollar seems to buy less and less, let's use all the avenues available to us to stretch that dollar as far as it can go.



Clay R. Campbell



## Inside

September 2015  
Vol. 4, No. 11

## Making Reading More Accessible 12

Bookmobiles deliver resources to the people, as libraries change with the times.

### Also In This Issue

Side Roads 10

In the Kitchen 16

Great Picture Hunt 18

Festival Roundup 22

Outdoor Pursuits 24

Parting Shot 30

Your utility pages: 4, 5, 6, 7, 8, 25, 26, 32



# FKEC NEWS

SEPTEMBER 2015

WWW.FKEC.COM

**FLORIDA KEYS  
ELECTRIC COOPERATIVE  
ASSOCIATION, INC.**

*Member Owned Since 1940*

## BOARD OF DIRECTORS

**James J. Boilini**

District 1, Key Largo • President

**Gretchen Holland**

District 1, Key Largo • Vice President

**Michael H. Puto**

District 4, Marathon • Secretary

**Frank N. Hawkins, Jr.**

District 2, Tavernier • Treasurer

**David C. Ritz**

District 1, Key Largo

**Craig Belcher**

District 2, Tavernier

**George D. Hertel**

District 3, Islamorada

**Cale Smith**

District 3, Islamorada

**Karl M. Wagner**

District 4, Marathon

## CONTACT US:

(305) 852-2431 • (800) 858-8845

Pay by Phone 1-855-385-9912

www.FKEC.com

Mailing Address

P.O. Box 377, Tavernier, FL 33070

## MEMBERS SHOULD

**KNOW:** *Don't be Scammed!*

*Never give your personal, confidential, or financial information to any unidentified individuals.*

Unless otherwise noted, "FKEC NEWS" writing, design & photography by:

**Nikki Dunn Cullen** • [news@fkec.com](mailto:news@fkec.com)

Edited by: Rebecca Callahan Newman

## Employee Milestones: CEO Scott Newberry Celebrates 25 Years

Florida Keys Electric Cooperative congratulates Chief Executive Officer Scott Newberry on his 25-year employment anniversary.

"Scott is an exceptional leader and we are lucky to have him at FKEC," said Board President Dr. Jim Boilini. "On behalf of the board, we would like to thank Scott for his years of dedicated service and for always striving to take FKEC to the next level."

In 1990, Newberry joined FKEC as the Planning, Rate and Budget Analyst and a few years later earned the position of Chief Financial Officer. From that position he was promoted to Assistant General Manager and in January, 2006, he was promoted again to Chief Executive Officer.

Scott began his career in the electricity industry in 1988 when he joined the Rural Electrification Administration (REA) in Washington, D.C. With the REA, he worked as a Commercial Loan Specialist and later as a Power Requirements Officer before moving to the Florida Keys to join FKEC. Newberry's electrical industry experience also includes completing the three-year national electrical



course for apprentice linemen as well as the National Rural Electric Cooperative Association's Management Internship Program. He also holds both a degree in Agriculture Business and Economics and a Master of Business Administration degree.

Outside of the cooperative, Newberry is active in the community and enjoys playing golf and spending time with his wife Danette and their families.

"I am proud to have been a part of FKEC for the last 25 years," said Newberry. "I'm also grateful to work with outstanding co-workers and board members and am proud of what we've achieved together."



**Maria Jones**  
15 Year  
Anniversary



**Sharon Claude**  
15 Year  
Anniversary

**FKEC celebrates employee anniversaries in five-year intervals.**

# GLADES Electric Cooperative, Inc.

"Neighbors Working for Neighbors"

A Touchstone Energy® Cooperative 

## OFFICES

Open 7 a.m. to 6 p.m. Monday through Thursday

26733 U.S. Hwy. 27 East/P.O. Box 519  
Moore Haven, FL 33471  
(863) 946-6200  
Fax: (863) 946-2150

214 SR 70 West  
Lake Placid, FL 33852  
(863) 531-5000

808 N. Parrott Ave.  
Okeechobee, FL 34972  
(863) 467-5111

## POWER INTERRUPTION NUMBER

Moore Haven .....(863) 946-6200

Phones are answered 24 hours a day, seven days a week, including weekends and holidays. Please have your location or account number handy when you call.

## BOARD OF TRUSTEES

John "Jack" Cox, President, District 8  
Lake Josephine, (863) 655-3056  
James "Jim" Aul, Vice President, District 7  
Lorida, (863) 441-0441  
Russell Henderson, Sec./Treas., District 3  
Ortona and Palmdale, (863) 946-0865  
Donnie Lundy, Trustee, District 1  
Moore Haven, (863) 946-0402  
Barney Goodman, Trustee, District 2  
Hendry County, (561) 414-8737  
Shannon Hall, Trustee, District 4  
Lakeport and Brighton, (863) 946-3242  
Ladd Bass, Trustee, District 5  
Venus and Hicoria, (863) 441-2227  
Lee Henderson, Trustee, District 6  
Highlands Park, (863) 633-9281  
Angela Hodges, Trustee, District 9  
Okeechobee, (863) 801-3140

The next meeting of the Board will be at 9 a.m. September 24 at the Moore Haven headquarters office. Any changes to this schedule will be posted in the lobby of all three district offices.

## EXECUTIVE STAFF

CEO Jeff Brewington  
CFO Jennifer Manning  
CTO Jesse Wallace  
Dir. of Business Development Paul McGehee  
Dir. of Employee Services Yvonne Bradley  
Dir. of Engineering Travis Turner  
Dir. of Member Services Margaret Ellerbee  
Dir. of Operations Tracy Vaughn

FL-153

## CEO's Message

# Look for New Rate Structure

With the advent of the smart grid and more energy-efficient appliances, building materials, construction practices, conservation efforts, self-generation and government regulations, the utility industry is experiencing a quantum change. Kilowatt-hour use—the primary and historic data bedrock used to determine monthly energy bills—is on a decline, causing a shortfall in the revenue utilities need to operate and maintain the costly electric grids they have built to serve their customers. Operation and maintenance of the grid is a utility's fixed cost of operations. It remains and continues to rise in cost regardless of energy consumption. Historically, utilities have recovered most of these fixed costs through the variable kWh component. That worked well during times of increasing energy use, but times have changed, and rate structures must follow suit.



Jeff Brewington

With this in mind, we recently engaged a professional rate consultant to complete a cost-of-service and retail rate study to quantify the cost to serve each rate class and determine an appropriate rate adjustment for each class. We asked the consultant to shift more of the cooperative's fixed costs out of the energy component, or kWh, and into the fixed monthly charge, and to reduce the number of energy billing tiers from three to two. We also merged two similar rate classes: general service demand and large power service.

Overall, the study indicated we required a 0.55 percent increase in revenue to maintain financial stability. The range of change among rate classes includes a high of 8.43 percent for time-of-use non-demand and a decline of 0.18 percent for large pump service. Although 8.43 percent may seem extraordinary, it represents a total annual increase of \$1,284 for the entire rate class. The time-of-use demand rate class declines by 0.14 percent, or \$1,507 annually, for the entire class.

Residential service will see a 0.62 percent increase, which equates to 72 cents more a month from current rates on 1,000 kWh—our average level of residential use. With the shift of fixed costs out of the energy charge and elimination of the third energy billing tier, residential rates will decline on all use exceeding 1,000 kWh. The general service class will increase by 1.10 percent overall, or an average of about \$19 a year per account. The combined general service demand and large power service class will see a 0.07 percent decrease, or \$5,801 annually. However, services previously designated GSD could see increases depending on kWh use. Accounts with higher kWh use could see reductions. The small pump service class will increase by 6.26 percent overall, or an average of about \$94 a year per account, although accounts with higher energy use could see reductions. The large pump service decline of 0.18 percent provides an average annual reduction of a little more than \$18 per account.

This rate restructure should take effect with November billings and will set the course for your cooperative's future success. We will continue to do all we can to keep your cost of service as low as possible while maintaining the cooperative's financial footing and its wherewithal to provide you quality service.



Gulf Coast  
Electric Cooperative  
A Touchstone Energy® Cooperative

#### OFFICES

722 West Highway 22  
P. O. Box 220  
Wewahitchka, FL 32465  
(850) 639-2216 or (800) 333-9392

9434 Highway 77  
P. O. Box 8370  
Southport, FL 32409  
(850) 265-3631 or (800) 568-3667

6243 East Highway 98  
Panama City, FL 32404  
Phone: (850) 481-1188

[www.gcec.com](http://www.gcec.com)

#### CEO/GENERAL MANAGER

Michael E. White

#### TRUSTEES

President Waylon Graham  
Vice President Jimmy Black  
Secretary Eddie Jones  
Treasurer Rupert Brown  
Doug Birmingham  
Robert Byrd  
Gary Cox  
Kinneth Daniels  
Betty Moore

*Trustees normally meet the third Tuesday of each month at 12:30 p.m. CST. The board meets at the Wewahitchka office in even-numbered months (February, April, June, August, October and December) and the Southport office in odd-numbered months (January, March, May, July, September and November).*

**The mission of GCEC:** Fulfilling the changing needs of our membership and communities by providing cost effective, reliable and safe utility services through a dedicated and responsive workforce.

FL-154

### GCEC President's Message

# Labor Safely When Working Outdoors

During late summer and early fall, many of us work outdoors before the weather turns cooler. Outdoor chores require caution, especially around electricity.

Faulty extension cords are a common cause of injury, as are metal ladders coming into contact with overhead power lines.

The U.S. Consumer Product Safety Commission suggests following these safety guidelines when working outside.



Waylon Graham

#### Extension Cords and Power Tools

- Check power tools and electrical cords to make sure they are in good repair. Only use power tools outside that are designed for outdoor use.
- Extension cords should be designed for outdoor use. They are thicker, more durable and have features for preventing moisture damage.
- Use three-wire extension cords with three-pronged plugs.
- Check the amperage rating of the extension cord to make sure it is large enough to meet the power demand of the tool.
- Do not plug one extension cord into another. Use the proper length for the job.
- Unplug extension cords when you are finished using them. Never leave an open extension cord plugged into an outlet.

#### Ladders

- Use fiberglass or wooden ladders when working around overhead wires or other electrical sources. Metal ladders conduct electricity and can kill anyone who is touching the ladder if it comes into contact with electricity.
- If you must use a metal ladder, carefully check the location of all overhead power lines to avoid contacting the wire or touching the ladder to something that touches the electrical source, such as a tree branch.
- Lower a ladder before carrying or moving it.
- Never work on a windy day, as a gust of wind could shift a ladder into an overhead power line.
- When placing a ladder on the ground, make sure the distance to the nearest overhead power line is at least twice the length of the ladder.
- Always place a ladder on solid level ground to prevent sliding. ■

**Gulf Coast Electric Cooperative offices will be closed Monday, September 7, in observance of Labor Day. From all of us at GCEC, have a safe and happy holiday weekend.**



## Peace River Electric Cooperative, Inc.

A Touchstone Energy® Cooperative 

**TO REPORT POWER OUTAGE CALL:**  
**1-877-282-3656**

**CORPORATE HEADQUARTERS**  
210 Metheny Road  
Wauchula, Florida 33873  
Hours 8 a.m. to 5 p.m., M-F  
Telephone: 1-800-282-3824  
FAX: 866-201-1814

**MANATEE SERVICE CENTER**  
14505 Arbor Green Trail  
Lakewood Ranch, FL 34202  
Hours 8 a.m. to 5 p.m., M-F  
Telephone: 1-800-282-3824  
Fax: 941-752-4928

**INDIAN LAKE ESTATES**  
17363 County Road 630  
Lake Wales, Florida 33898

For your convenience, a payment drop box is located at the front gate. Payments will be posted on the next business day.

### BOARD OF DIRECTORS

**John Martin**  
PRESIDENT

**Hollis Albritton**  
VICE PRESIDENT

**Sam Rawls**  
SECRETARY/TREASURER

**Maurice Henderson**  
ASST. SECRETARY/TREASURER

**Ellen Bachman**  
DIRECTOR

**Leonard Crawley**  
DIRECTOR

**Willie Dawes**  
DIRECTOR

**Chris Portale**  
DIRECTOR

**Bruce Vickers**  
DIRECTOR

### BOARD MEETING ATTENDANCE

Any PRECO member may attend a Board Meeting. Due to building security requirements and for us to facilitate attendance, members wishing to attend a Board Meeting should contact the Cooperative in a timely manner for logistical information regarding the meeting.

### UPCOMING BOARD MEETING DATES

September 22, 2015  
October 20, 2015  
November 17, 2015

FL 155

# Announcing SmartHub: Easy, Convenient Account Management



**I'm pleased to announce that Peace River Electric Cooperative will soon be launching a new account management system for the convenience of our members. It's an easy-to-use system named SmartHub.**



**Randy Shaw**  
General Manager & CEO  
PEACE RIVER ELECTRIC COOPERATIVE

Simply put, SmartHub is power at your fingertips. SmartHub gives you more control than ever before over your electric account, your electric use and bill payment management. This system will allow you to review and analyze your electric use and payment history data, thereby providing the information necessary to make informed decisions on how you use electricity.

SmartHub — accessible on the web and your smart phone or other mobile device — delivers accurate, timely account information and allows you to make payments in a secure environment, when and where you want. By directly entering payment information yourself into SmartHub, you keep all other eyes away from your credit card, debit card or banking information.

SmartHub is also a communication tool between you and your Co-op. The two-way communication included with SmartHub allows you to notify us of account and service issues while providing us a way to let you know about special offers, programs, events and more.

## AS WITH ANYTHING NEW OR DIFFERENT, YOU PROBABLY HAVE QUESTIONS. ALLOW ME TO ANSWER A FEW:

Can I pay my electric bill over the web or on my smart device? **YES.**

Can I pay by credit card, debit card or check? **YES.** And, also with a new feature called e-Check which works just like a real check.

Can I sign up for recurring auto-pay options? **YES.**

Can I sign up for paperless billing? **YES.**

I have more than one account. Can I pay them all using SmartHub? **YES.**

Is my personal information secure on SmartHub? **YES.**

Can I set up alerts to notify me when a payment is due or has been made? **YES.**

Can I receive alerts by email, text message or both? **YES.**

Can I review my past history of payments and electric use? **YES.**

Can I view my electric use by the month, day or even by the hour? **YES.**

Can I report a power outage through SmartHub? **YES.**

Can I edit my contact information via SmartHub? **YES.**

Can I contact Member Services through SmartHub? **YES.**

Can I request a service using SmartHub? **YES.**

When can I begin using SmartHub? **OCTOBER 5.**

And, this is only some of what SmartHub can do for you. After you've tried SmartHub, I believe you're going to love its ease and convenience. Don't forget: You have to wait until October 5 to begin using SmartHub.

**We want to serve you better. That's why at PRECO, we're always looking out for you.**

*Randy*