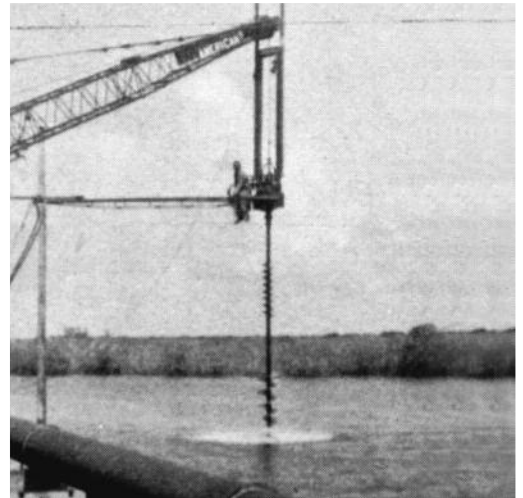
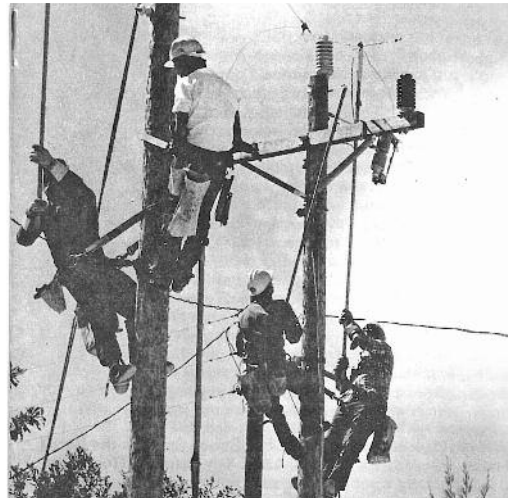
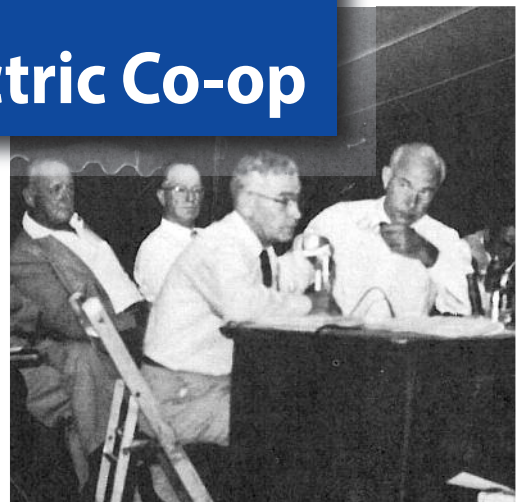
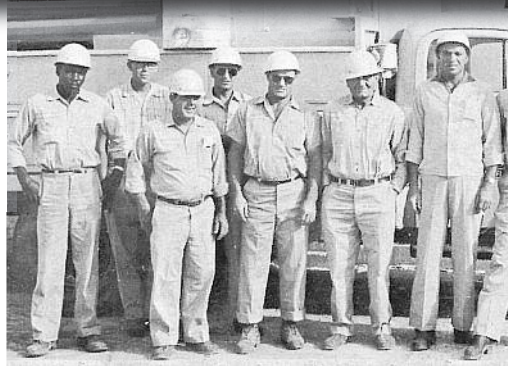


Our First 75 Years The History of Florida Keys Electric Co-op





Dedicated to

This book is dedicated to all the men and woman who played intricate roles in bringing electricity to the Upper and Middle Keys, and to those who continue to work to maintain the integrity of that service and this Cooperative. This includes FKEC employees, leaders, and of course you, our member-owners.

We celebrate our past and look forward to our future.



Established
1940

For more about FKEC's history and the genesis of electricity in the Keys visit www.fkec.com/Cooperative/history.cfm.

At the time of its incorporation, FKEC provided centralized electricity with only one small generating plant in Tavernier (pictured here) and two portable units in Marathon.

We've come a long way, Baby!

To Our Members,

In 1940, against great odds members of the Upper and Middle Keys communities came together to form the Florida Keys Electric Cooperative Association, Inc. Although, our area was considered a rural, quiet place, residents knew they needed centralized power to improve their quality of life and bring prosperity to the islands they loved. This is why our history is your history. And why our company legacy will always be entwined with the communities and members we serve.

As we look back on FKEC's 75 years in operation, it is clear that the cooperative principles of open membership, economic participation, democratic control, concern for community, and member education that we were founded on continue today. Our dedication to being an influential community partner and proud hometown electric provider also remains steadfast.

To celebrate the spirit of our community, our members, and employees past and present we created this history summary of the Florida Keys Electric Cooperative. We hope you enjoy reading about our shared history, as much as we have enjoyed compiling it.

Thank you,
John Stuart
FKEC Chief Operating Officer
and Resident Co-op Historian

This book is an account of the 75-year history of the Florida Keys Electric Cooperative Association, Inc. It was produced in March of 2016, based on findings in FKEC documents and other resources available at the time of publication. Sources include: FKEC files, Jerry Wilkinson, Monroe County Library and Keynoter Publishing Company. Research, writing & design by: **Nikki Dunn Cullen and John Stuart.**

Inside

CHAPTER I	4
Timeline and Inception	
CHAPTER II	10
Storm Hardening Hurricane Donna	
CHAPTER III	14
Member News, Then & Now Technology's Impact	
CHAPTER IV	18
Original Territory Community Partnership Employee Commitment	
CHAPTER V	22
FKEC Managers, CEO Board of Directors	
CHAPTER VI	26
75-Year Timeline & Photos	



FKEC Celebrates 75 Years

How FKEC Came to be and Milestones Accomplished



SCOTT NEWBERRY
Chief Executive Officer

Excerpt from Scott Newberry's January 2015 CEO Report:

I am very proud to be the CEO of Florida Keys Electric Cooperative as we celebrate 75 years in operation. Can you imagine life here in the Keys prior to reliable electricity? It is something a few of our longest standing members can envision, but for younger generations it is almost impossible to picture.

To give you an idea of how FKEC came to be, here is a brief summary of our last 75 years in operation.

1930s – The Need for Power Grows

In the early 1900s, many years after the rest of Florida had central electric service, the Upper and Middle Keys still had none. In the 1930s, a few privately-owned generating plants provided a limited number of homes and businesses with electricity for a few hours a day, but even those hours were unreliable.

1935 – Two Events Impact Future of Power

It was the combination of two major events in 1935, plus the determination of a handful of local residents, that ultimately advanced the delivery of electric service to our service territory.

The first was the creation of the Rural Electrification Administration (REA) by President Franklin Roosevelt, which offered federally financed loans for the construction of electric distribution systems in rural communities.

The second event was the 1935 hurricane, which wiped out the railroad. The loss of the railroad prompted the development of the Overseas Highway, which in turn created easier access to our islands as well as a greater demand for electricity.

1939 – Founders Round-up Members

Despite a growing demand for electricity many Keys residents were still skeptical of joining an organization that demanded a \$5 membership fee, paid in advance. In fact, it was difficult to obtain the 300 memberships required by the REA to start the Co-op. Luckily, the vision and determination of the founding leaders

could not be discouraged. In fact, enthusiasts like Allen Parrish of Marathon bought 20 memberships himself to meet the quota.

1940 – Inception!

On January 22, 1940, the Florida Keys Electric Cooperative Association, Inc. was certified by the Florida Secretary of State with an office address of the "Marathon Grocery, Marathon, Florida."

Four days later FKEC had its first board meeting and John A. Russell of Islamorada was elected chairperson.

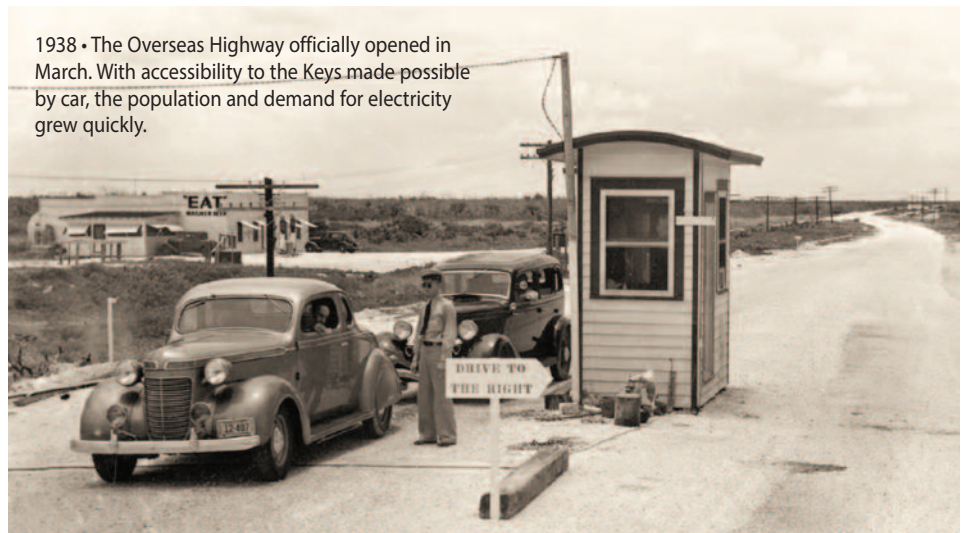
1943-1951 – Generating Plants Grow

By 1943, FKEC operated a small plant with three generators in Tavernier and had two portable units in Marathon.

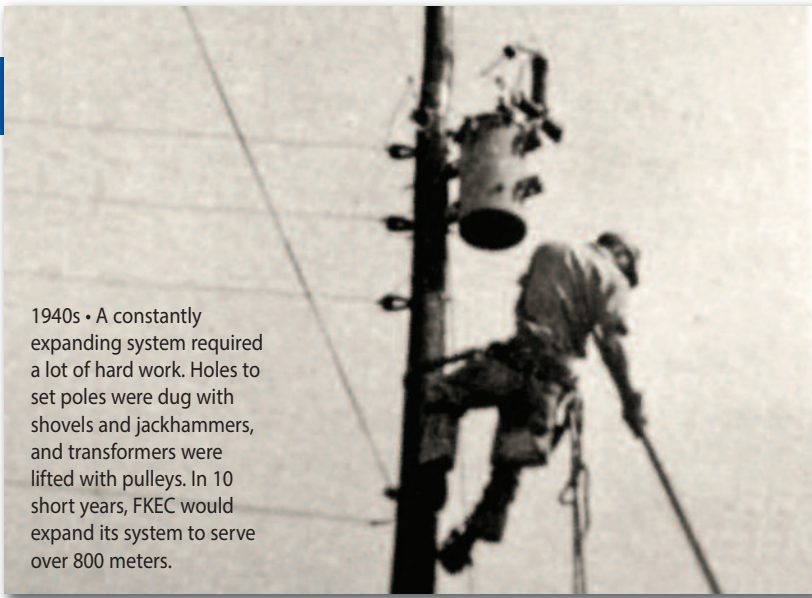
In 1947, FKEC extended electric service up North Key Largo to the Angler's Club and to houses in between. In 1951, Coral Shores School opened for grades K-12, and FKEC had to keep expanding to meet the greater demand for power.

1957 – FKEC Connects to Mainland

In 1957, FKEC constructed a 69,000-volt



1938 • The Overseas Highway officially opened in March. With accessibility to the Keys made possible by car, the population and demand for electricity grew quickly.



1940s • A constantly expanding system required a lot of hard work. Holes to set poles were dug with shovels and jackhammers, and transformers were lifted with pulleys. In 10 short years, FKEC would expand its system to serve over 800 meters.

transmission line to deliver power from the mainland. The following year FKEC began purchasing electricity wholesale from FP&L, as it does today. At this time the line did not extend to Marathon. There the generating plant was expanded.

1960 – Hurricane Donna

By 1960, the Marathon facility could provide 11,000 kW from its plant. It operated faithfully through Hurricane Donna which destroyed much of the outside facilities; however, the diesel generators kept running as each portion of our power system was restored.

1981 – Grid Expansion

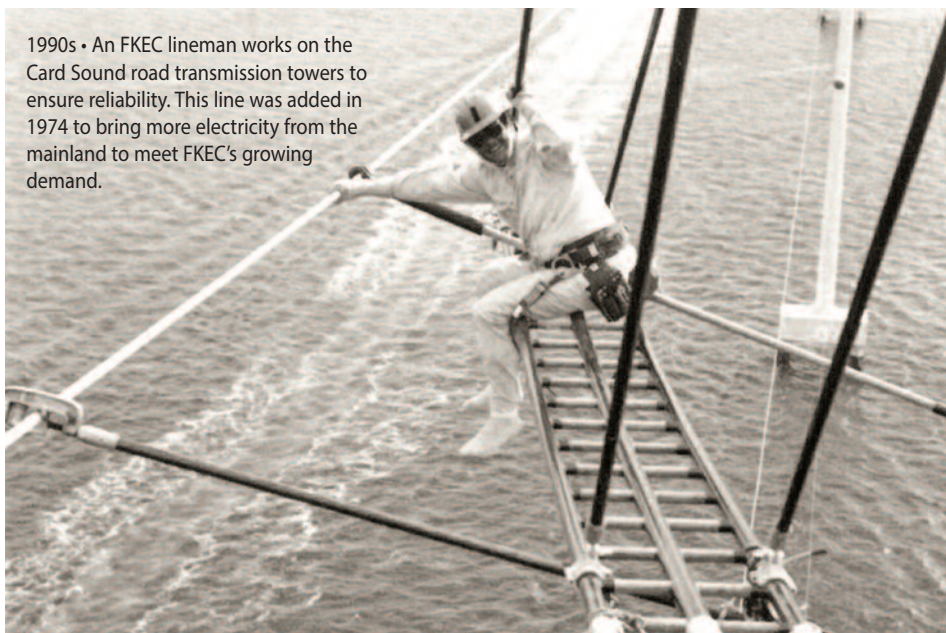
The next major grid expansion was in 1981 when transmission lines were installed

between Tavernier and Marathon. This combined the two separate facilities and Marathon could use the purchased power from FP&L. After nearly four decades of constant operation, the diesels at Marathon could shut down and be reserved for emergencies.

1992 – Hurricane Andrew

In 1992, Hurricane Andrew destroyed the 69,000-volt transmission line (a secondary line at that time) that was built in the 1950s. It was replaced with a larger 138,000-volt transmission line.

We have come a long way and look forward to serving you with the same determination and progressive vision as our founders.



1990s • An FKEC lineman works on the Card Sound road transmission towers to ensure reliability. This line was added in 1974 to bring more electricity from the mainland to meet FKEC's growing demand.

Capacity & Service

Accounts Served:

32,382 (2014) 4,649 (1960)

Average System Load:

134.2 MW (2014) 3.7 MW (1960)

System Capacity:

329 MW (2014) 13.9 MW (1960)

Average System Peak:

157.3 MW (2014) 8.1 MW (1960)

Average Monthly Use per Consumer:

2,250 kWh (2014) 659 kWh (1960)

Total Kilowatts Sold:

679,461,524 (2014) 32,000,000 (1960)

Average Retail Cost of Power:

12.65 cents (2014) 3.23 cents (1960)

Cost of a Loaf of Bread:

\$2.40 (2014) .20 cents (1960)

FKEC Power System

Total Miles of Line:

831.1 (2014) 325 (1960)

Miles of Main Transmission Line:

100 (2014) 36 (1960)

Miles of Distribution Line:

636.6 (2014) 299 (1960)

Substations:

Marathon (1954)
Tavernier (1957)
Jewfish Creek (1967)
Islamorada (1974)
Key Largo (1977)
Crawl Key (1999)



The Inception of Florida Keys Electric Co-op

Electricity in the Keys

Ten years after Thomas Edison produced an electric dynamo producing direct current in 1879, John J. Philbrick built the first power plant in Key West. This was great for Key West, but the luxury of centralized electricity was still absent in the Upper and Middle Keys.

Many years after the rest of Florida had central electric service available to homes and businesses, most of the Keys were still in the dark.

The first real attempt to provide

the small but growing population in the Upper Keys with access to electricity was made by H.S. "Mac" McKenzie. McKenzie came from Miami in 1928 and began constructing a small business center. Along with bulk oil storage tanks, he built a gas station, an icehouse, hardware store, lumberyard, auto repair garage, drug store and theater.

The theater he built, in anticipation of entertaining the WWI vets building the highway, was not successful and was later converted into a hotel. That hotel still exists as the Tavernier Inn located at Mile Marker 91.8.

Behind the Tavernier Inn (see photo right) is where McKenzie, in conjunction with Florida Power and Light (FP&L) first installed a 50-horsepower diesel generator and electric lines to those residents who wished for his service. Mac's daughter Joanne remembers the generator being named "Old Hessie."

In the beginning, power lines running along US 1 only carried power from "Old Hessie" to homes and business from MM 90.5 to MM 92. And

it was only offered for a few hours in the morning and in the evening. It wasn't even enough hours for food refrigeration, but it was something.

A few years later, Alonzo Cothron constructed a small electric system in Matecumbe. Like the Tavernier unit, he only provided electricity during essential hours. Eventually, "Mac's" Tavernier plant served about 37 customers and Matecumbe about 22 customers. Marathon had a similar small generator operation.

Another early private power plant was installed for the Caribbee Colony (see photo to left) on southern Upper Matecumbe Key in the early 1930s. It was known for its electrically lit outdoor dance floor and its extremely large thatched roof chickee hut built by the Seminole Indians. Excursion trains came in the morning and departed in the evenings from the Matecumbe siding. The 1935 hurricane destroyed the Caribbee Colony.

FKEC is Born

It was the combination of the creation of the Rural Electrification



FKEC FOUNDER H.S. "Mac" McKenzie

McKenzie was one of the first pioneers to try and bring electricity to the Upper Keys. After moving to Tavernier from Miami in 1928 he began constructing a shopping plaza and, in conjunction with FP&L, installed a 50-horsepower generator in the area behind what is still the Tavernier Inn.

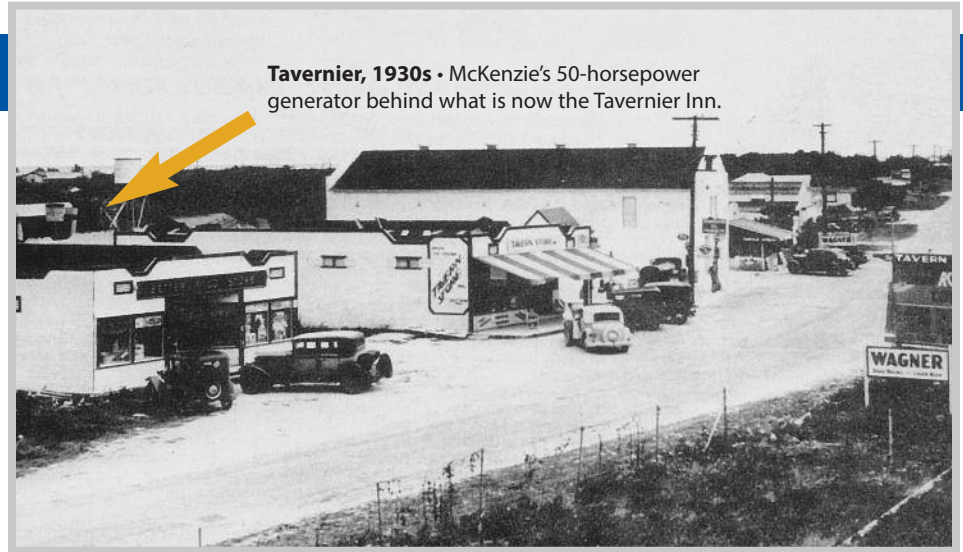


Upper Matecumbe, 1930s •
The private power plant installed for the Caribbee Colony.

Administration (REA) by President Franklin Roosevelt, the destruction of the 1935 hurricane, and the determination of a handful of local residents that ultimately lead to the creation of FKEC.

In 1938 the official opening of the Overseas Highway brought growth in population and electrical demand; however, many Keys residents were still skeptical of joining an organization that required a \$5 membership fee, paid in advance. In fact, it was difficult to obtain the 300 memberships required by the REA to start the Co-op. Luckily, the vision and determination of the founding leaders could not be discouraged. Finally, Allen Parrish of Marathon bought 20 memberships himself to meet the quota.

With the required membership, Florida Keys Electric Cooperative Association, Inc. was certified by the Florida Secretary of State on January 22, 1940, with an office address of the "Marathon Grocery, Marathon, Florida." Four days later the Cooperative held its first board meeting and elected John A. Russell (see photo) as chairperson.



Tavernier, 1930s • McKenzie's 50-horsepower generator behind what is now the Tavernier Inn.

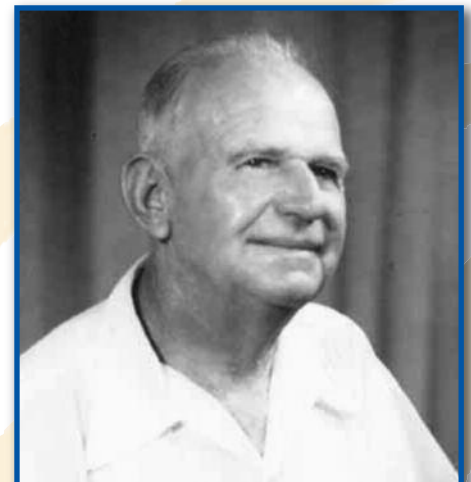
FKEC Goes Online

In April of 1941, Chairperson Russell obtained a partial loan of \$50,000 from the REA to start construction of lines. A few months later the company purchased the holdings of FP&L and McKenzie for \$6,230. We also purchased land and constructed a plant in Tavernier. With all the equipment in place, FKEC went online on December 1, 1942.

Captain Eugene Lowe, William "Spud" Albury and Austin Reese worked as the first generation plant equipment operators. Alonzo Cothron (who had built a small electric system in Matecumbe prior to 1935) installed the power lines and would later serve

as FKEC's second board president.

By 1943, FKEC operated a small plant in Tavernier with three generators and had two portable units in Marathon. With the end of the war the economy grew even more. Many tourists who visited the Keys decided to stay, and each new resident meant more work for the Cooperative. FKEC would grow rapidly over the next 20 years.



FKEC FOUNDER John A. Russell

Russell was elected as the first Chairperson of FKEC and served in that position for five years. Russell was a second generation Keys native "conch" as the son of John Henry Russell who was the son of Richard H. Russell, who moved to Key West in 1838. The family then moved to Key Vaca and on to Upper Matecumbe Key in roughly 1854.





First Plant Manager & 20-Year Board Member

Capt. Eugene Lowe, FKEC Pioneer

Life-long Tavernier resident and professional fisherman Captain Eugene Lowe was influential in FKEC's earliest years. His first major impact on the utility would come in 1942 when a fishing charter he captained resulted in FKEC acquiring the transformers needed in the construction of the power system.

Wilson Lands a Fish, Lowe Lands a Deal

In the time between becoming a certified utility and going online in 1942, FKEC was busy constructing the power system, but due to the war, supplies were scarce. The company was in need of essential equipment such as transformers before it could deliver power.

Luckily for FKEC, in 1942 a man by the name of Charles E. Wilson booked a day of fishing with the community-minded Captain Eugene Lowe.

Wilson was the president of General Electric, a builder of electric transformers, and was serving as a dollar-a-year civilian advisor on President Roosevelt's War Production Board. That board happened to control the use of war-critical materials.

Wilson landed a big tarpon and decided his great day of fishing should be celebrated. Sometime during the celebration Capt. Lowe mentioned how badly the community needed electrical transformers. When Wilson asked how many, Lowe modestly replied, "We could use at least six."

Only a couple of weeks later the transformers arrived. Imagine the need for merely six transformers. Now the average neighborhood power system consists of dozens of transformers.

This deal was the first of many that Lowe contributed toward the advancement of FKEC's power system.

Plant Operator and Elected Trustee

Lowe had worked at the McKenzie generator facility prior to FKEC purchasing the holding, so it was natural that he would become one of the first Tavernier generation plant operators in 1941. Later, he would be the first plant manager, a job he often did without pay.

In 1946, Lowe was elected to the Board of Trustees (an organization we now call the Board of Directors). He served on the board for 20 years and as president for 17. He was also on the Safety Committee. When he stepped down from the board in May of 1966 he had been associated with Florida Keys Electric Cooperative longer than any other person.

While many people played large rolls in FKEC's inception, Lowe's is the longest of the founders and one of the most influential.



It was the sheer determination of a few local people that kept the generating plants humming and the Co-op from folding in the 40s.



Seated L-R: Lynn Griffin, Islamorada; Ralph Cunningham, Jr., Marathon; Charles Robel, Islamorada; Eugene Lowe, Tavernier; George Miller, Marathon; S. J. Bond, Key Largo; Standing: Joseph Lance, Key Largo; John Puto, Marathon; William King, Marathon; Everette Albury, Tavernier - ca. 1960

FKEC Founder Finds Pig in Storm Wreckage

KEY PIG ESCAPES AAA AND SURVIVES STORM

Hurricane Whips House From Over Old Drake and His Family
and Smashes Crate Pen of Hardy Porker At Islamorada But
All Live To Grunt and Quack About It.

Among the survivors of last week's hurricane in the Florida keys, list the following:

Item: One pig, overlooked by Henry A. Wallace, secretary of agriculture, in his campaign for reduction of American porkers.

Item: One moss-backed old drake and 11 ducks of a former flock of 20.

The above items are owned by Alonzo Cothron, Islamorada resident who was one of the few to go through the hurricane on Upper Matecumbe key and live to tell about it.

Mr. Cothron, his face bronzed to leathery tan by the sun, smiled yesterday as he recounted the findings of his pig, drake and ducks on a visit Sunday to the hurricane scene.

"I had nalled the pig up in a crate the afternoon before the hurricane," Mr. Cothron said, "thinking that would be about the safest place I could put it with the storm coming on.

"I left the ducks free, thinking they would go under the house and be safe there. I never thought about the wind blowing the house away."

Surviving the disastrous sweep of wind and rain, Mr. Cothron came to Miami among the refugees from the Islamorada disaster. He went back down Sunday to see what might have been left of his former possessions.

There was nothing, he said; nothing except—

"As I was approaching the site of the house I had last been in I heard the sound of grunting from the wreckage of roots and palm trees. And then my pig pushed his nose out of a hole he had dug himself into, and came running up to me just like a dog."

The old drake was encountered by Mr. Cothron swimming leisurely along in Upper Matecumbe key in the general direction of Miami.

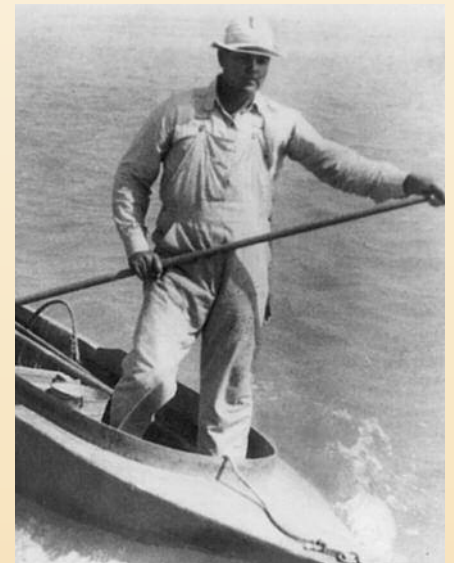
"He didn't stop to greet us," the Islamorada resident said, "but just kept swimming along."

The ducks had appeared from out the jungle debris, Mr. Cothron added, when national guardsmen had established a post at what remained of Islamorada. The guardsmen had fed the ducks but there was little fresh water for them and they appeared immensely thirsty.



**FKEC FOUNDER
Alonzo Cothron**

Alonzo Cothron, a Conch and FKEC founder, brought limited power to his hometown of Matecumbe prior to FKEC's inception in the early 1930s. He also installed some of FKEC's first power lines and would later serve as FKEC's second board president.





Strength to Withstand

Building a Storm Hardened System

Excerpt from 2015 Annual Report:

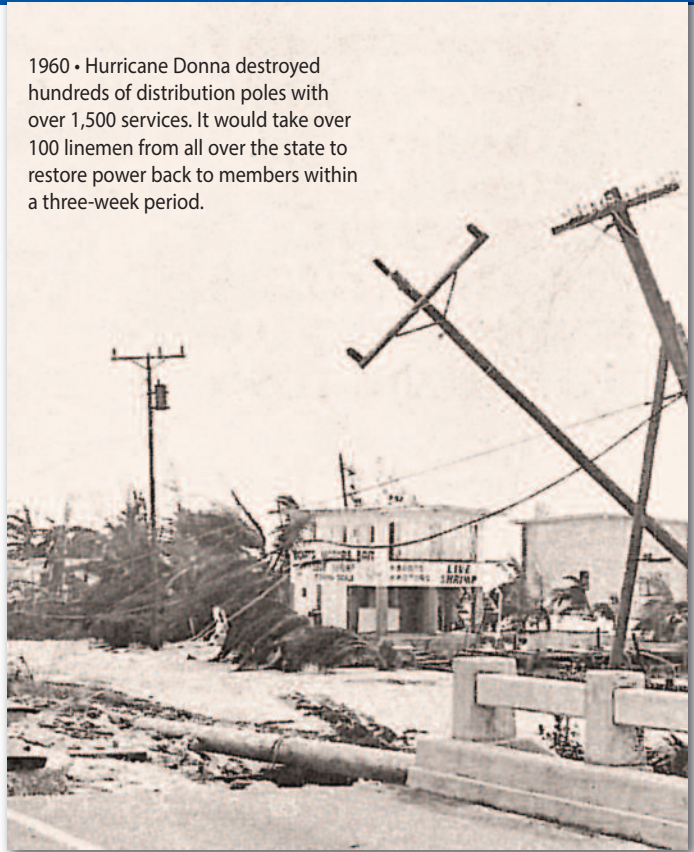
Hurricanes are usually remembered for the damage they do to power systems, and rightfully so. However, their destruction can sometimes lead to a better, stronger, more efficient power system. In the case of the 1935 Hurricane, its destruction ultimately led to the development of the Overseas Highway and a boom in Keys population, which resulted in a push for electricity that could not be ignored.

Since FKEC's inception, our area has been affected by several hurricanes and tropical storms (the timeline below lists the most prominent). After each storm FKEC has rebuilt an even stronger, more storm resistant system and further improved our restoration plan. But, even more important than improving our system after a storm, is our goal of building a storm-hardened system that lessens or can withstand a storm's impact.

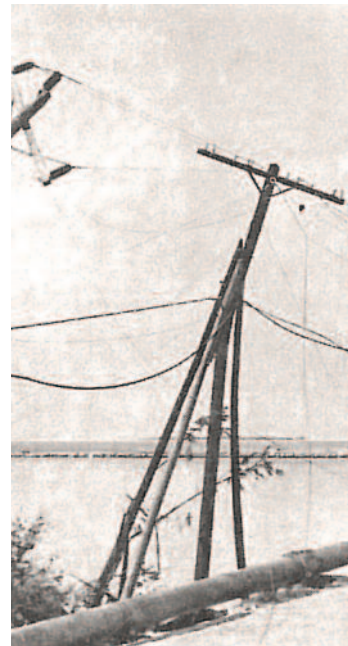
Our system's strength and ability to stand strong against a storm is considered with every project we conduct. FKEC implements storm strong equipment such as ductile iron poles rated to withstand 150 m.p.h. winds, reclosers to minimize outages, and an outage management system to increase response efficiency.

In 2009, the Cooperative increased its strength by completing construction of the storm-hardened Tavernier Operations center. The center can operate independently without outside assistance for 72 hours, and includes a warehouse that can protect vital equipment and bucket trucks inside during a storm.

In addition to planning and completing special projects to improve the strength of our power system, FKEC performs year-round maintenance and inspections to maintain reliability. This includes the Co-op's vegetation management program, which maintains line clearance to decrease outages caused during storms.



1960 • Hurricane Donna destroyed hundreds of distribution poles with over 1,500 services. It would take over 100 linemen from all over the state to restore power back to members within a three-week period.



Hurricane Donna destroyed over 100 utility poles in 1960. Since then poles have improved and FKEC now implements ductile iron poles rated to withstand 150 m.p.h. winds.

The 1935 Hurricane – destroys the railroad and leads to easier access to the Keys via the Overseas Highway

Hurricane Donna – Destroys water crossings and hundreds of poles. Damages exceed \$1 million

Hurricane Betsy – Causes over \$140,000 in damages

Hurricane Andrew – Destruction to the 69-kV line along the Stretch leads FKEC to replace it with a 138-kV line

Storms Dennis, Katrina, Rita and Wilma impact the Keys

FKEC completes \$8.8 million in Storm Hardening projects

FKEC opens storm hardened Tavernier Operations Center

1935

1960

1965

1992

2005

2005-2008

2009

A well-known boat rental establishment in downtown Marathon is pictured here after the wrath of Hurricane Donna.



Reprinted by permission of the Keynoter Publishing Company Inc.

1960: Hurricane Donna Sweeps Florida Keys

On Thursday, September 8, 1960, the dreaded double hurricane flags – each one red with a central black square – were hoisted at various points in the Greater Marathon area to warn residents of Donna’s threat. The hurricane, which headlines deemed the worst storm in U.S. history at that time, was passing through “hurricane alley” between Cuba and Florida heading straight for the Keys.

Forewarned, Keys residents braced for the storm. According to a report produced by The Florida Keys Keynoter in 1960, 50 percent of locals between Marathon and Tavernier “packed hurriedly and drove to havens

in Homestead and Miami.”

In the days before the storm, the then twenty-year-old Florida Keys Electric Cooperative was also preparing to stand strong against Donna. An excerpt from FKEC 1961 Annual Report reads, “Before the hurricane struck, your cooperative employees secured Cooperative property as thoroughly as possible. The stacks of the Marathon Generating Plant were guyed, for example. The large fuel tanks previously had been filled with oil to anchor them firmly. Doors and windows were boarded and shuttered. Vehicles were moved indoors where possible. Food and other supplies were

obtained for both Marathon and Tavernier personnel.”

While no employees were asked to stay in the face of the oncoming hurricane, most did and fought through the storm to save what equipment they could.

In the early morning of Saturday, September 10, the eye of the storm passed over the Middle Keys. According to FKEC documents, it crossed near the Long Key area. The Weather Bureau estimated winds between 175 and 180 miles per hour, but FKEC officials believed wind gusts exceeded 200 miles per hour from Marathon north to Islamorada.



Evaluating the Aftermath

Immediately after Donna passed, FKEC began attempts to assess the situation. However, this was nearly impossible as the Tavernier office and Marathon office had no means of communicating. Both telephone and radio communications were down, and U.S. 1 was washed out in five places between the Upper and Middle Keys. The last time the two offices had been in contact was at midnight on Friday, September 9.

Stuck in Tavernier unable to find out about the extent of damage further south, FKEC General Manager J.H. Phillips enlisted the help of ham radio operators to contact the Co-op's system engineer Mr. E.P. McLean in Georgia. Phillips requested McLean obtain emergency construction crews and locate a helicopter to aid in accessing the southern territory. While waiting for McLean to send reinforcements, on September 11, Phillips "hitchhiked" a ride to Marathon via Navy helicopter and for the first time

learned something of the destruction to the Middle Keys.

In a report sent to the Rural Electric Administration to inform them of the damage and progress of restoration, Phillips wrote, "Although our system suffered great destruction, we consider ourselves extremely fortunate in that our power supply at the Marathon Generating Plant was not lost and our transmission line to our Tavernier substation was re-energized 20.5 hours after power was interrupted during the height of the hurricane." The precautions taken to secure the Marathon Generating Plant were credited with saving the facility.

With both power sources available, FKEC focused on repairing the obliterated poles and lines that distributed power to consumers.



Prior to Donna impacting the Keys, FKEC had just completed a \$1.25 million line improvement project, which included the construction of five and a half miles of 69-kV transmission line involving 115 structures. Of those 115 new structures, Phillips reported 45 were "wrecked" and he described the 75-foot poles as being "broken like match sticks." He found the destruction south of Tavernier to be indescribable, writing, "It must be seen to be believed."

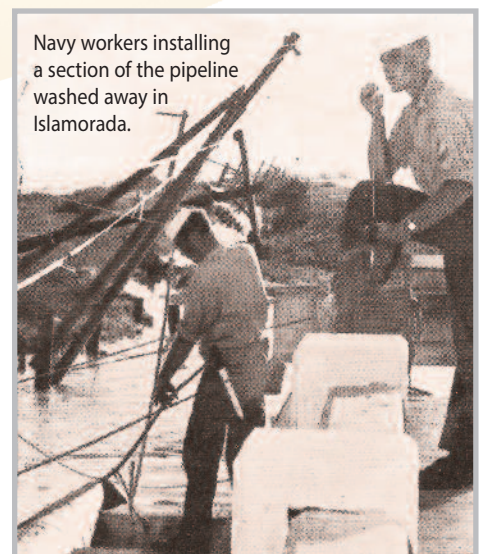
Restoring and Rebuilding After Donna

Hurricane Donna left a wake of destruction behind her when she crossed the Florida Keys on September 9, 1960. She knocked out the power, washed out the water pipeline and took out several bridges connecting our chain of islands. People from Tavernier to Marathon were without power, water and in many cases without transportation. However, despite the destruction, in true Keys fashion no one sat around licking their wounds. The entire Keys community immediately came together to start the rebuilding process.

At FKEC, the outside assistance requested from McLean Engineering began arriving only days later. Approximately 50 line construction personnel

were deployed to the area from Georgia and Mississippi. Crews were also sent from fellow Florida Cooperative Sumter Electric and Musgrove Construction in Live Oak. In total, 100 linepersons would arrive to work beside our local crews to restore power over the three weeks following Donna.

While our crews worked to restore electricity, Navy crews from Key West were also arriving to help. They immediately set up an emergency canteen to feed locals and also began the urgent repair of the pipeline and highway. This involved installing emergency bridges. A particularly devastated water crossing was Tea Table Bridge where the bridge and 1,000 feet of



Reprinted by permission of the Keynote Publishing Company Inc.



This aerial photo of the north approach to Tea Table Bridge near Islamorada shows the gap in the water crossing.

Reprinted by permission of the Keynoter Publishing Company Inc.

pipeline were lost.

In the Upper Keys where the destruction was slightly less than that experienced in the Middle Keys, FKEC was able to re-energize the Tavernier substation less than 21 hours after Donna passed. While this enabled the Co-op to serve populations north of the substation, it would be eight days before the Co-op could make the repairs necessary to get power down to Islamorada and 15 days until the feeder line was re-energized down to Lower Matecumbe.

Further south, crews were working to restore power in the Middle Keys, which had taken the brunt of the storm.

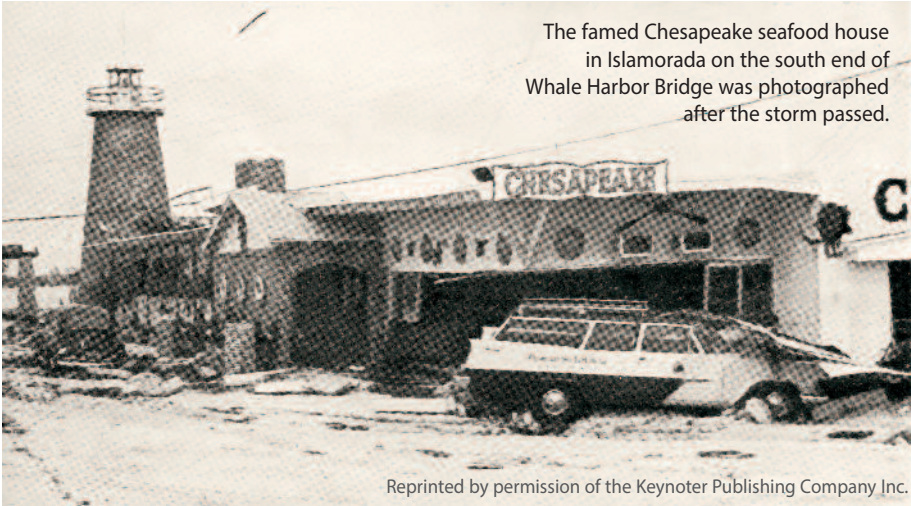
Although the Marathon Generation Plant had withstood Donna and was up and running, the hundreds of distribution poles carrying power to approximately 1,500 members would need to be repaired.

By the end of September, only three weeks after Donna, most of Marathon was restored and receiving power produced by the plant. In the case of Long Key, which was still completely isolated because of destruction to bridges at both ends of the island, a temporary 100 kW generator was installed as a stopgap. FKEC used emergency generators in various areas to fill in the gaps while power poles and lines were repaired.

This solution allowed FKEC to provide power to nearly all who wanted it less than a month after Donna devastated our service territory.

Damages caused by Donna would exceed a million dollars and require just about as many man-hours to repair.

In the 1961 FKEC Annual Report, President Eugene Lowe wrote, "The long hours of overtime required for weeks and months afterward were provided without complaint and without question. The men and women who work for us proved a greater motivation than their personal interests. They served the Keys well, and we give them our heartfelt public thanks."



The famed Chesapeake seafood house in Islamorada on the south end of Whale Harbor Bridge was photographed after the storm passed.


Reprinted by permission of the Keynoter Publishing Company Inc.





FKEC Member News Then and Now

Over FKEC’s 75 years in operation many aspects of providing electricity have changed, but staying in touch with our members and sharing timely information has not. Take a walk down memory lane with us as we compare news from FKEC newsletters then and now.



**ONE
for the
MONEY-**

Want to get more out of *your* dollar? We wouldn't recommend wringing it out . . . people are hard enough on bills these days.

But there is one good way to get more out of that shrinking violet—the good old dollar.

**USE ELECTRICITY
USE MORE ELECTRICITY
USE ELECTRICITY MORE WISELY**

Electricity is your cheapest commodity. The dollar today will buy less than one-third what it did in 1900. But that same dollar buys more than twice as much electricity now as it did in 1913. You gain both ways.

Today the average cost per kilowatt of electricity is the same as it was in 1939 and yet cotton was selling for 9c per pound then, hogs 6c per pound and beef 5c per pound. Those prices have gone a long way since then . . . but electricity has stayed the same.

Your locally owned-locally controlled co-op is doing its part, not only to hold the line on electric power cost but to maintain a high standard of service. Your co-op has helped you to squeeze that dollar . . . And another way to save for yourself and your country is to invest in Defense Bonds. To coin a phrase . . . a penny saved is a penny saved.



**Your
Co-Op
News**

AUGUST, 1958 - Vol. 8 No. 8

There's more time for family fun with an electric dishwasher. This portable model rolls on wheels -- needs no installation. New models, both portable and undercounter, are smartly styled and engineered to take over the complete dishwashing job.

Energy Use Past and Present

In 1958, FKEC’s August newsletter advertised a modern convenience available to Keys residents thanks to the power of electricity – the dishwasher. Now in 2015, we continue to share valuable appliance news by publishing information about purchasing cost efficient appliances or ways to operate appliances more efficiently.

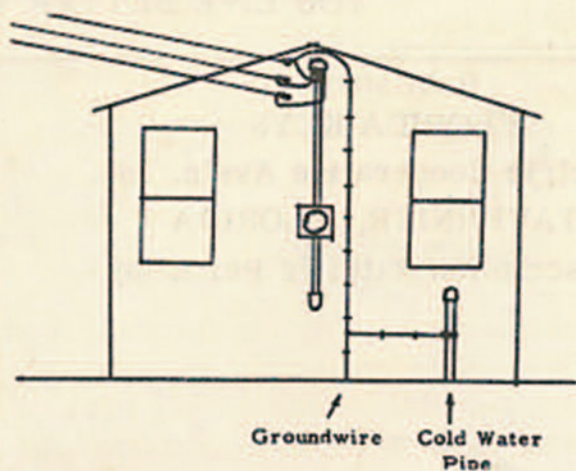
When this article “One for the Money” (see left) was printed, power service had only been available in the Upper and Middle Keys for a little over a decade and the benefits of using electricity were still new to many FKEC members. Then, the Co-op found it important to share news about the cost benefits of power use to encourage members to use electricity. Now, we share information about ways to conserve and reduce energy consumption to help our members keep their costs low and help the environment.

DO YOU HAVE LIGHTNING PROTECTION ?

Unfortunately, a house is very attractive to lightning. Its attraction increases as you add things such as electricity, telephone, and television antenna if they are not installed properly.

You can make your home reasonably safe from lightning if you follow these recommended practices:

1. Bond your water system.



This drawing shows a typical 3-wire service with the ground wire bonded to the closest cold



YOU LIVE BETTER
WHEN YOU LIVE
ELECTRICALLY

Safety Then and Now

Safety has always been a primary concern at FKEC. Since inception in 1940, the Cooperative has strived to bring reliable, affordable and safe power service to its member-consumers.

In the 1950s, common safety tips included teaching residents about properly grounding antennas to protect against lightning. Now to safeguard homes against lightning and power surges FKEC offers meter-mounted surge protection.

Sixty years ago, a safety issue facing Co-op members was home wiring that was insufficient to power the rapidly increasing use of electrical appliances. To keep members safe, FKEC printed warnings like the one below.

THESE TROUBLES INDICATE YOUR HOME NEEDS MORE HOUSEPOWER! YOU MUST HAVE ADEQUATE WIRING IF YOU WANT TO LIVE BETTER...ELECTRICALLY!

WHEN FUSES BLOW...OR TOASTER'S SLOW

YOUR IRON WON'T HEAT...THE LIGHTS SEEM LOW

THE "VAC" WON'T VAC...THE PICTURES SHRINK AND ALL APPLIANCES SEEM ON THE BLINK-

WHEN OUTLETS ARE FEW—WHERE THERE'S ONE, SHOULD BE TWO SO EACH DOES MORE WORK THAN IT'S SAFE TO DO

THE WAFFLE IRON'S NEW—...BUT THE WAFFLE'S AREN'T NICE...

THE WIRING'S AT FAULT—NEED THIS TIMELY ADVICE...

CALL YOUR ELECTRICAL CONTRACTOR... GIVE HIM A RING...

YOUR HOUSE IS IN NEED OF MORE WIRING!

PREPARED AS A PUBLIC SERVICE BY ALLIS-CHALMERS COMMITTEE ON ADEQUATE WIRING

HAVE YOU THOUGHT OF AN AIR-CONDITIONER OR A DEHUMIDIFIER AS MEANS OF BEATING THE HEAT? IT'S A GOOD IDEA AND COSTS SO LITTLE.



Technology's Impact on How We Operate

Excerpt from Scott Newberry's May 2015 CEO Report:

In 2015, FKEC's 75th year in operation, I was asked about the biggest change I had personally witnessed at FKEC. While I could think of many, I have to say the most significant advancement in our business is in technology, specifically in the changes in automation.

During FKEC's first 50 years in business almost everything was done manually, but over the last 25 years all that has changed. Now, computer automation plays a role in nearly every aspect of the way we do business.

When I started at the Co-op 24 years ago, I think there were less than five computers used company-wide. Now there are computers on every desk and

even in every bucket truck.

As we noted in the 2015 Annual Report, one of the greatest impacts technology has had on our industry is in the way we manage power outages. It wasn't that long ago that we didn't know an outage had occurred until a member called. Linemen were then dispatched to assess the situation and "ride the line" to locate the problem, determine the cause and decide how to fix it. As you can imagine, that took time. Now, our computerized Outage Management System (OMS) does all of this automatically, drastically minimizing the length of any outage.

To further utilize technology, we are introducing an Outage Texting program. Members who registered for the program

will get outage updates automatically generated by our OMS. This will allow us to share outage information with you before you even have to ask for it. Instead of you calling to report the outage, we will text you so you know we are aware and that restoration is in progress. If our system fails to recognize your outage, the text program also allows you to report an outage by texting "outage" to FKEC at 45183.

While we always work to prevent and limit outages, we know we can never prevent them 100%. We see this new tool as a beneficial addition to our live online power outage viewer, our local media outreach and the other ways we share details about outages with our members.

Advances in Technology Changing the Way We Operate

Excerpt from 2015 Annual Report:

During the first 50 years of FKEC's history, work was mostly manual or mechanical. Now, nearly everything is computerized or automated. Members can track power outages online, our meter crews can check meters with "drive-by" technology, and relays that had to be switched manually by linemen in the field are now controlled remotely by FKEC's System Operation Center. While the basic function of delivering electricity is the same, the way we go about it has changed greatly.

Perhaps one of the greatest advancements is how technology has changed the way we manage outages. For most of our history linemen dispatched to repair an outage had no idea of the cause or exact location of the fault. Now, our Outage Management System (OMS) pinpoints the precise location of the fault and predicts the cause so linemen arrive better prepared to resolve the situation quickly.

Technology has also allowed us to incorporate more environmentally friendly practices into the way we do things. In 2004, new technology allowed us to begin offering interconnectivity to members generating their own solar or alternative power. In 2008, FKEC installed the first grid-connected solar arrays in the Florida Keys. Since "green" initiatives first appeared in our industry, FKEC has been dedicated to implementing environmentally-friendly practices whenever possible.



1974 • FKEC increased meter reading efficiency by using right-hand jeeps to position the reader at the curb closer to the meter. Now meter readers use "drive-by" technology to efficiently and accurately read meters without leaving the vehicle.

Technology: Now and Then

Over the last 75 years advances in technology have revolutionized the way FKEC does business. While some advances have come with a learning curve and at times struggle, FKEC has always prided itself on staying current and at the forefront of our industry. It remains our continued goal to provide reliable, safe electricity and quality customer service. We strive to do this by embracing technology while also staying true to our standard of personalized, home-town consumer care.



FKEC's second truck purchased in 1946

“ It is amazing how much our fleet has changed in 75 years. From two trucks to over 130 different vehicles. But it's not just in the size, it's also in the change in technology. I'm sure the crews using our first trucks could not have imagined trucks with 80-foot booms or hybrids running off electricity.”

- Joe Sheriff, Fleet & Building Maintenance Supervisor



“ During my early days at FKEC, working as a lineman, I remember getting dispatched to outages and knowing very little about the problem. Now, as a System Operator when I dispatch crews the degree of information and accuracy of location provided by the technology we use is impressive.”

- Kevin Setchell, Manager of System Operations



Circa 1990

“ I remember when FKEC got its first credit card machine. We only had one for the whole office, so we often had to wait in line to use it to process a member's payment. Now, less than 20 years later members can pay with their credit card in many ways, including using their smart phone mobile app.”

- Shawn Mulholland,
Member Service Supervisor



FKEC's Dennis Minton and Tim Planner
in FKEC's first System Operation Center



Kevin Setchell (right) with
Charles Hughes in FKEC's
System Operations Center.



A Little Known a Piece of Co-op History

FKEC's Original Territory was to Serve all of the Keys

Florida Keys Electric Cooperative currently serves from Key Largo to the beginning of the Seven Mile Bridge, but that territory is very different from the one originally intended. When the Cooperative was first being conceptualized the plan was for FKEC to provide electricity to all residents living outside of Key West. Remember, in the 1930s Key West was a bustling, energized metropolis but the rest of the Florida Keys was still without any centralized power service.

In the late 1930s, with the combination of the Overseas Highway increasing population throughout the Keys, Rural Electric Administration (REA) funding being available, and the vision of young, ambitious engineer E.P. McLean entering the scene the idea of an electric co-op would finally catch steam.

After learning of an inquiry to the REA to bring power to the Florida Keys, McLean made a trip south to Key West to see if his new engineering company could be the business to bring power to areas outside of Key West. McLean's first stop was to meet with Key West Conch, prominent businessman and president of the Key West National Bank William Porter. Porter agreed to meet with the engineer but for only 10 minutes following a dinner party.

McLean's pitch to Porter went well, very well, and at 11pm Porter and his guests were still up planning the Florida Keys Electric Cooperative.

When FKEC was incorporated in 1940, the intent was to serve members from Key Largo to Stock Island. In fact, 75 of the 300 memberships required to obtain incorporation were purchased by residents living south of Marathon.

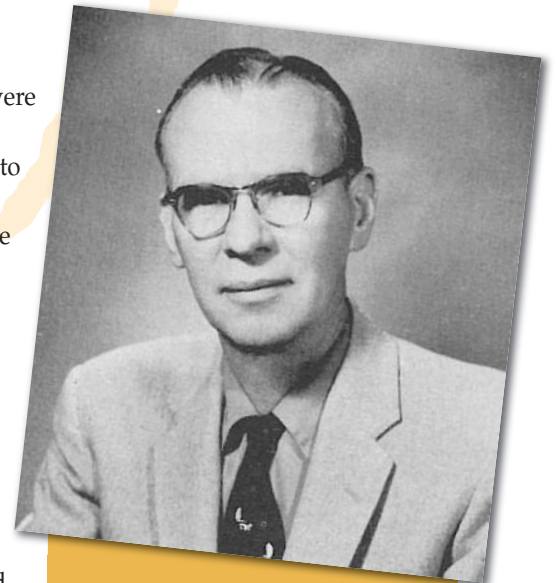
To follow this intent, in 1942 FKEC began operating a 100kW generator to serve portions of Stock Island and Boca Chica Army Air Station. Electric lines were also constructed, but due to the lack of adequate generation FKEC was unable to energize those lines.

In search for generation to serve the Lower Keys, FKEC attempted to purchase the Key West Electric Company, but that effort failed and, instead, the City of Key West created City Electric. When efforts to purchase energy from City Electric (now Keys Energy Services) also failed, FKEC was forced to give up efforts to serve the lower Keys.

In 1945, FKEC sold the Stock Island generator and distribution lines to City Electric, and removed the un-energized line in Stock Island to provide materials to complete the transmission line

between Tavernier and Marathon.

After petitioning the county to begin serving the Lower Keys area, City Electric began providing power to that area in 1953. At that time the co-op refunded the \$5 membership fee to the 75 members south of Marathon and FKEC's service territory officially became from the Monroe-Dade county line down to the Seven Mile Bridge.



Engineer E.P. McLean

In 1939, electric engineer E.P. McLean traveled to Key West to seek support to build a rural electric cooperative to serve residents from Key Largo to Stock Island.

FKEC History "Out Take"

William Porter Refuses Hemmingway

In 1930 Ernest Hemmingway returned to Key West flush with royalty checks from "A Farewell to Arms." In need of cash the writer visited the First National Bank where a Mr. William Porter was president. Unfortunately for Hemmingway, the bank did not cater to just anyone – especially a scruffy stranger – and Porter refused to cash Hemmingway's \$1,000 check. Luckily for residents in the Keys without electricity at that time, Porter took more kindly to E.P. McLean when he pitched the businessman his idea for a rural electric cooperative.

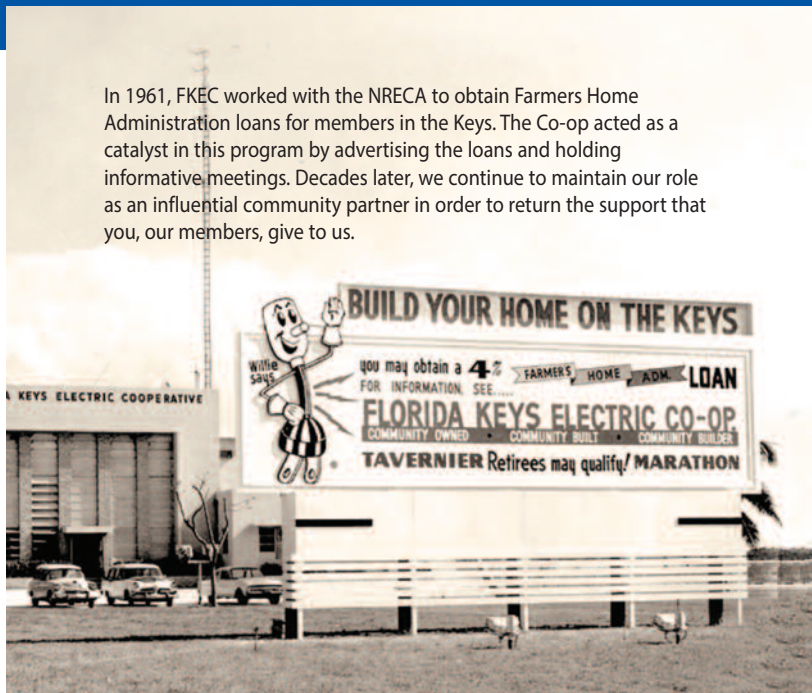
Not to worry, after Porter turned him down Hemmingway made his way to a speakeasy on Front Street called Sloppy Joe's. There owner Joseph Russell happily cashed the check and won a lifelong friend and customer in Ernest Hemmingway.

Proud Community Partner for 75 Years

At FKEC we have made it our top priority to be invested community partners, both as individuals and as a company. That means we are focused on staying connected, giving back, and sharing our knowledge and resources with our community whenever possible.

As outlined in our Vision Statement, we are committed to being an “influential community partner.” We do this through our annual community programs, services, employee fundraising, volunteering, mentoring, coaching and sponsorships – And when we are giving back we are never alone. Our sponsorship logo is displayed next to countless other community business partners, and our employees are always working shoulder to shoulder with you, our generous members who are also dedicated to sustaining the giving spirit of this community.

We are proud to have cultivated and maintained a strong community relationship since our inception 75 years ago and are certain we will continue that tradition for another 75 and more.



In 1961, FKEC worked with the NRECA to obtain Farmers Home Administration loans for members in the Keys. The Co-op acted as a catalyst in this program by advertising the loans and holding informative meetings. Decades later, we continue to maintain our role as an influential community partner in order to return the support that you, our members, give to us.



Circa 1990, FKEC crews donate time to setup tents for a local fundraiser.



1996, FKEC employees are recognized for coaching youth sports teams.



Circa 2009, FKEC crews explain electric safety and demonstrate equipment at Stanley Switlik School career day.



Photos by David Vanden Bosch

2015, FKEC helped “stuff the bus” with United Way of the Florida Keys staff and volunteers at the Marathon warehouse.



2010, Take Stock in Children Program Coordinator and two Coral Shores graduating seniors who received scholarships from the program visited FKEC to thank the board of directors for their generous annual donations.



Moe Leslie



Mark Weeks



Bill Lee



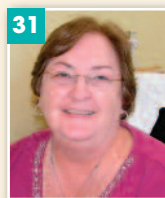
Craig Rabito



Blane Parker



Dennis Minton



Charlene May



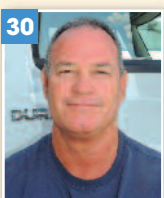
Hermes Garcia



Shawn Mulholland



Andy Baxter



Darrell Davis



Kevin Setchell



Mike Valles



Kim Jones



Dan Raber

20+ Years in 2015



Gene Ehrenkauffer



Ivan Mixon



Ray Rhash



Mike Roberts



Thomas Sawyer



Eddie Dudley



Andy Burdick



Joe Joyce



Robert Lovell



Scott Newberry



Vickie Jorgensen



Jason Richards



Cheryl Massey



Jason Heller



Adam Pierce



Luis Chavala

Strength Built on Employee Commitment

In 2015, 31 of FKEC's 117 employees celebrated 20 plus years at the Cooperative.

While each FKEC employee is a valued member of the team, it is important to recognize the company's longest-standing employees because it is their depth of knowledge – accumulated by decades of training and experience – that has carried the trust of our local members since 1940.

In addition to our long-standing employees, we also appreciate the newer employees who have recently joined the team.

In all, it is FKEC's unmatched foundation of long-standing employees combined with new faces that keep FKEC at the forefront of our industry.

The Co-op was founded by the people of this community who work every day to continue our proud history of being an involved, supportive, community-owned cooperative.

FKEC's Longest Standing Employees to Date

Willie West • 54 Years



In 2011, FKEC's longest standing employee, Willie West, retired a few months shy of his 54-year employment anniversary.

On September 2, 1957, at the age of 22, West worked his first day at FKEC. The company itself was only 17 years old and served a mere tenth of the members it does now.

On one of the company's first eight trucks, West and his fellow line crewmen carried an air compressor to run a jack hammer. They used the jack hammer, picks and shovels to chip holes in the coral rock to set the area's first wooden power poles that carried electricity to homes in growing neighborhoods.

"Willie's years of service and dedication will go in the history books," predicted CEO Scott Newberry at West's retirement. "His strong work ethic, loyalty and first-hand perspective are irreplaceable."



Willie West and his fellow line crew circa 1960.

Carl Paul • 46 Years



In May 1961, Carl Paul joined FKEC as a Groundman on the Line Crew. He retired, 46 years later, as the FKEC Marathon Operations Director.

From Groundman, Paul entered the Apprentice Lineman program earning the designation of Journeyman Lineman in just three years. He was later promoted to Assistant Foreman, Line Foreman, Marathon Area Supervisor, Superintendent of Distribution, Special Projects Manager and finally to Marathon Operations Director. He also served on FKEC's Safety Committee.

Paul is a Marathon native and a Marathon High School alumni. His father, Irvin C. Paul, also worked for FKEC in Marathon for 33 years.

At Paul's retirement CEO Scott Newberry said "Carl's personal experience and hands-on knowledge of our power system are irreplaceable. We appreciate his loyalty and dedication, and will miss him as a member of our staff and co-op family."



Carl Paul (right) and Charles Russell (left) accepting a company beautification award from the Marathon community.

Charles Russell • 41 Years

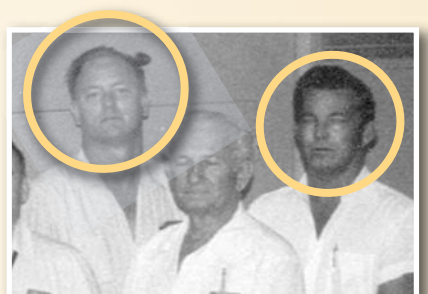


Charles Russell started his career at FKEC in 1961 right after he graduated from Marathon High School. His first position was as an "oil wiper" working in the Marathon Generation Plant. That same plant would later be named the Charles A. Russell Generation Facility following his sudden death in 2002.

In 1968, Russell was drafted into the Army and served for two years before returning to FKEC.

Once back at the Cooperative, he went on to work in a variety of positions, learning all aspects of FKEC before earning the position of General Manager and CEO in 1988. Russell held that position for over a decade before his untimely death.

Read more about Russell on the following page.



Charles Russell (left) and childhood friend and co-worker Carl Paul with the Marathon Generation crew in the 1981 FKEC Annual Report.



Past and Present

FKEC Managers: Lighting the Way for 75 Years



SCOTT NEWBERRY
Chief Executive Officer, 2005 - present

“Serving as FKEC’s ninth CEO/Manager has always made me proud, but as we’ve reflected on our history this year in honor of our 75-year anniversary, I’ve found even more pride in our legacy. Thanks to our leaders, staff, employees and members both past and present, FKEC now has a past, present and future we can all be extremely proud of.”

Scott Newberry joined FKEC in 1990 as the Planning, Rate and Budget Analyst. He went on to serve as Chief Financial Officer and Assistant General Manager before earning a promotion to Chief Executive Officer in 2005.

Under Newberry’s leadership, FKEC has completed over \$15 million in storm-hardening projects, built the new Tavernier Operations Center, installed the first grid-connected solar array in the Florida Keys, implemented a geographical information and outage management system, negotiated a new 20-year purchase agreement with FP&L, increased the system’s import capacity from 166 MW to 192 MW, and achieved 1.7 million hours of work without a lost-time injury.

Tim Planer began at FKEC in 1988 as superindependent of transmission and two years later was promoted to Assistant General Manager by long-time Manager Charles Russell. Planer began his career as an electric utility worker in 1963 with Sumter Electric Cooperative in Central Florida and held many positions from tree crew worker to System Superintendent of Operations.

While Planer served as CEO and Manager, FKEC installed a remote meter reading system, increased the capacity of the Tavernier Substation to serve future demand, and FKEC employees achieved 1 million hours of work without a lost-time injury. Under his leadership the Co-op also replaced miles of aging underground cables and modernized and upgraded overhead lines in the large Islamorada neighborhoods of Port Antigua and Venetian Shores. During his last years as CEO, the company worked through and recovered from Hurricanes Dennis, Katrina, Rita, Wilma and Ivan.



TIM E. PLANER
FKEC CEO/Manager, 2002-2005

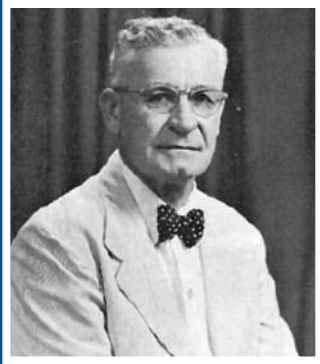


CHARLES A. RUSSELL
FKEC CEO/Manager, 1988-2002

Charles Russell began his long, successful career at FKEC in 1961 right after he graduated from high school. His first position was as an “oil wiper” working on generators in Marathon. In 1968, Russell was drafted and served two years in the Army before returning to FKEC. When he returned, Russell worked in a variety of positions, learning every aspect of the electric cooperative’s operations. In 1988, his dedication earned him the position of General Manager.

During his time as FKEC CEO and Manager, a long-term purchase agreement with FP&L was signed to bring reliable power from the mainland to the Keys. As a result, the Marathon Generation Plant where he began his career ceased its daily operations but remained in service for emergency use. Also during his tenure, the 69-kV line along the stretch was rebuilt and upgraded to 138-kV after its destruction by Hurricane Andrew. Other accomplishments include the Crawl Key Substation completion and the repayment of the company’s entire indebtedness to the Rural Utility Service as FKEC grew from about 20,000 to more than 30,000 meters.

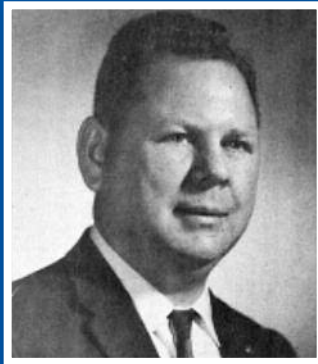
In 2002, Russell passed away suddenly from a heart attack. In honor of his service and leadership, FKEC dedicated the Marathon Generation Plant to him, naming it the Charles A. Russell Generation Facility.



H.L. MARTIN

First FKEC Manager, 1942-1959

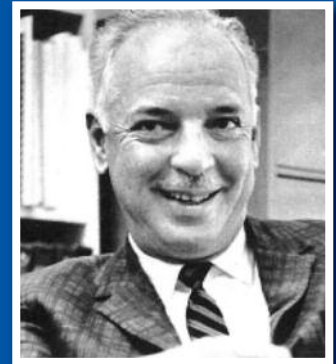
Serving 17 years, H.L. Martin was FKEC's first and longest-standing manager to date. Under Martin's leadership, FKEC completed the first system-wide distribution system, the Marathon Generating Plant came online and its capacity was increased over the years, a 14.7-kV tie-line to the mainland was completed and later upgraded to 69 kV, the Tavernier Substation and Headquarters were built, and FKEC grew from a few hundred meters to over 4,000.



JAMES H. PHILIPS

FKEC Manager, 1959-1964

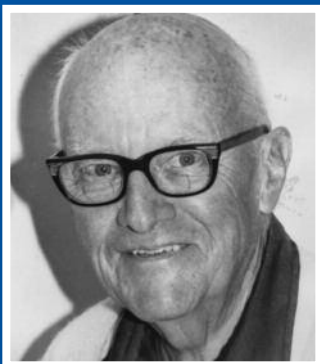
While serving as this Cooperative's second manager, James Philips worked with board president and founding father Eugene Lowe. During his five years of leadership, Philips faced the destruction and repair of our power system after Hurricane Donna devastated parts of the service territory. Rates were also reduced, the Member Service Department was created, and power sales doubled.



MOODY H. MULKEY

FKEC Manager, 1964-1965

Moody H. Mulkey's brief time as manager was marked by several hotly contested board elections and a complete change in direction by the new board majority. Although his time a manager was short, during his one year of service to the cooperative Mulkey served under two different board presidents, both George Miller and Leo F. Lipps.



JAMES T. ELLIS

FKEC Manager, 1965-1972

As FKEC's fourth manager, James Ellis lead the Cooperative through the impact and aftermath of Hurricane Betsy which heavily damaged parts of the service territory. He also persevered through a major equipment failure in the Marathon Generation Facility. Ellis also oversaw the completion of the Marathon office, the expansion of the Tavernier office, the building of Jewfish Substation, and an upgrade of the distribution lines from Tavernier to Marathon. In recognition of his leadership as manager and later as board president, FKEC named its Islamorada substation after Ellis.



FRED KRAY

FKEC Manager, 1972-1981

While serving as manager for nine years, Fred Kray saw FKEC grow from 10,000 meters to nearly 20,000. This growth meant the Co-op had to complete several projects to increase capacity to meet the growing demand. Under Kray's leadership the Marathon Generating Plant added 5 MW of capacity, the Card Sound 138-kV transmission line from Key Largo to Florida City was completed along with the Key Largo Substation, the 69-kV transmission line from Tavernier to Marathon was constructed and the first energy conservation programs began to appear.



EDWARD M. GRANT

FKEC Manager, 1981-1988

Edward Grant first served FKEC as an elected director on FKEC's Board, but resigned to become the Co-op's manager. During Grant's time as manager the 69-kV transmission line from the Jewfish Substation to Marathon was increased to 138 kV, work was completed to allow power to be delivered from Florida City to Key West through our service territory, the first Extreme High Voltage (EHV) Barehand Crew was formed to work on the 138-kV transmission lines, and a hand-held meter reading system was installed to more accurately and efficiently read meter data.



Representing Your Interests for 75 Years

Florida Keys Electric Co-op Board of Directors

It is the Board of Directors, past and present, who have guided the course of the Florida Keys Electric Cooperative over the last 75 years.

During the first decade of FKEC's existence, directors were elected at large with no distinction. Beginning in 1950, FKEC Directors were elected by districts. Initially there were two directors from Key Largo, two from Tavernier, two from Islamorada, and three from Marathon. In 1973, to coincide with a

shift in population, District 1, Key Largo gained a third director and District 4, Marathon lost one.

It is the job of the directors elected by the members to represent the interest of the members in that district and protect the overall interest of the Cooperative. It is your directors who have set the policies and standards that promote a progressive, financially sound, community-minded utility and require FKEC staff to meet or exceed the expectations of the membership.

Director	Year Served	District Served
John A. Russell	1940-1945	At Large
	1940-1945	Board President
Ellie Lowe	1940-1941	At Large
W.A. Parrish	1940-1942	At Large
Samuel R. Lund	1940-1943	At Large
Alton Park	1940-1944	At Large
T. Jenkins Curry	1940-1945	At Large
A.E. Woodburn	1940-1948	At Large
John A. McRae, Jr.	1942	At Large
Thomas Felton	1942-1943	At Large
Alice L. Lowe	1942-1943	At Large
Charles Clark	1943-1945	At Large
Frances Tracy	1943-1945	At Large
Bertram Pinder	1944-1945	At Large
Russell White	1944-1945	At Large
Francis Calhoun	1945-1946	At Large
Harry Harris	1945-1946	At Large
Alonzo Colthron	1946	At Large
	1946	Board President
Kenneth Kyle	1946	At Large
Walter Starck	1946	At Large
Hal Kaelin	1946-1947	At Large
Roland Miller	1946-1947	At Large
J. Clifton Russell	1947	At Large
R.J. Williams	1947	At Large
G. Donaldson	1947-1948	At Large
William Turner	1947-1949	At Large
C.R. White	1947-1949	At Large
Eugene Lowe	1947-1965	At Large & Tavernier
	1947-1963	Board President

Founder, **Eugene Lowe** is the longest serving president to date with 17 years in office. See page 8 for more on Lowe.

Cecil Toy	1948	At Large
C.O. Gordon	1948, 1950-1952	At Large & Key Largo
Vic Barothy	1948-1951	At Large & Islamorada
Warren Russell	1948-1952	At Large & Islamorada

Stanley Bailey	1949	At Large
J.C. Donaldson	1949	At Large
J.J. Hall	1949	At Large
Chester Tingler	1949-1957	At Large & Marathon
Deane Brigham	1950	Marathon
Phillip Saunders	1951-1954	Marathon
G.P. Hollenback	1953	Islamorada
A.M. Cunningham	1953-1954	Key Largo
Olin Perdue	1953-1954	Islamorada
Archie Rackley	1953-1954	Marathon
Paul Bridgham	1953-1955	Key Largo
Charles Robel	1954-1961	Islamorada
Frank Greenman	1955	Key Largo
George Grayson	1955-1956	Islamorada
W.F. Van Swearingen	1955-1956	Marathon
Everett Albury	1955-1958	Tavernier
Charles Childs	1955-1959	Marathon
John Leib	1956-1958	Key Largo
George Murray	1957-1959	Key Largo
Lynn Griffin	1957-1962	Islamorada
William King	1957-1962	Marathon
Joseph Lance	1959-1960	Key Largo
George Miller	1959-1964	Marathon
	1964	Board President
S.J. Bond	1960, 1962-1963	Key Largo
John C. Puto	1960-1966	Marathon
Robert T. Lance	1961	Key Largo
Walter W. Florida	1962	Islamorada
Richard Wood	1963-1964	Islamorada
John D. Day	1963-1965	Marathon
Ann Golenkow	1963-1968	Islamorada
Dwight Smith	1964	Key Largo
Leo F. Lipps	1964-1972	Tavernier
	1965-1966	Board President
E. Stan Brink	1965-1966	Islamorada
Joan Mowery	1965-1968	Key Largo
Gary Edelsen	1965-1970	Marathon
Frank F. Taylor	1965-1970	Key Largo
	1967-1969	Board President

Although 1962 was a very successful year, we are not satisfied, nor do we expect ever to be, that the best job of serving you is being done. We have a full realization of the responsibilities which go with the honor of serving on your Board of Trustees. We always will try to better fulfill the obligations of providing highest quality electric service at the lowest possible cost. We will strive to promote the growth of the system and increase efficiency of our operations at or better than the 1962 levels.

1962 • Board President Eugene Lowe sums up the high expectations set by the board that still ring true today.

Thorwald Christensen 1966
 Richard L. Barnes 1966-1968
 Dean Elver 1967-1969
 Mildred Lee 1967-1969
 Carroll Kennedy 1967-1970
G. Carlton Walters 1967-1973
 1970-1972
 Walter E. Kramer 1969-1970
 William A. Lane 1969-1976
 John Walters 1970
 August Woide 1970-1972
 James Arnold 1971-1972
 Richard F. Jones 1971-1972
Arthur J. Reiser 1971-1975
Tavernier

William Blackman 1971-1979
 1976
 Robert Girard 1971-1985
 Denver C. Booth 1973
 George McManus 1973-1974
Theodore P. Miscella 1973-1978
 1975
James T. Ellis 1973-1988
 1974

Two directors, **James T. Ellis** and **Edmund M. Grant** served on the board and as General Managers. Ellis was elected to the board in 1973 after resigning from the GM position and Grant resigned from the board to become GM in 1981.

Lucy P. Bennett 1974
Charles H. Anderson 1974-1991
 1980-1987
 Moncia A. Druckman 1975
 Jack C. Harrison 1975-1976
Joy L. Fegrous 1976-1979
 1977-1979
 Rev. Charles Truax 1976-1979
 George Charuhas 1977-1980
John R. Edwards 1977-1994
 1988
 Edmund M. Grant 1979-1980
 C. Osment Moody 1980-1966
 John H. Colby 1980-1981
 Charles E. Goss 1980-1994
 R.L. Barnes 1981-1992
B.L. Schwartz 1981-1998
 1989-1995
 L.A. Loumos 1982-1985
 Christian Fleisher 1986-1990
 Paul Mansell 1986-1992

Marathon
 Tavernier
 Marathon
 Key Largo
 Islamorada
Marathon
 Board President
 Islamorada
 Tavernier
 Marathon
 Key Largo
 Key Largo
 At Large
Islamorada &
 Board President
Islamorada
 Board President
 Marathon
 Key Largo
 Key Largo
Key Largo
 Board President
Islamorada
 Board President

H. Jay Miller 1986-2001 Islamorada
Samuel E. Wampler 1992-2001 **Islamorada**
 1996-2001 Board President
 Alice J. Skinger 1992-2002 Marathon
Greg Goebel 1993-2004 **Tavernier**
 2002-2004 Board President
 Michael H. Puto 1993-Present (as of 2016) Marathon

Current director **Mike Puto** is the longest serving director with 22 years and he is also the son of **John Puto** who served on the board from 1960 to 1967.

Frank Hawkins 1997-Present (as of 2016) Tavernier
 Craig Belcher 1999-2003 & Key Largo & Tavernier
 2005-Present (as of 2016)
 Gretchen Holland 1999-Present (as of 2016) Key Largo
David C. Ritz 1999-Present (as of 2016) **Key Largo**
 2005-2012 Board President
 James V. Mooney 2002-2003 Islamorada
 H.B.Barrett 2002-2013 Islamorada
 Sandra Wilson 2003 Marathon
James Boilini 2004-Present (as of 2016) **Key Largo**
 2012-Present (as of 2016) Board President
 George Hertel 2004-Present (as of 2016) Islamorada
 Karl Wagner 2004-Present (as of 2016) Marathon
 Cale Smith 2014-Present (as of 2016) Islamorada

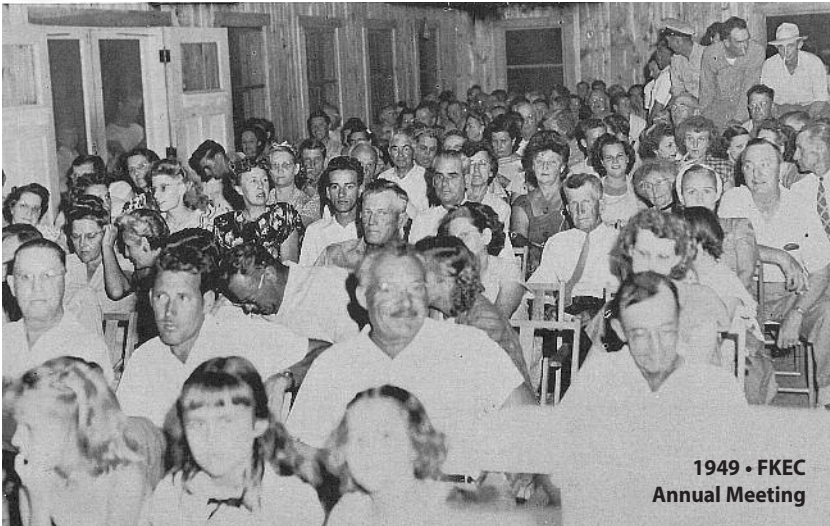
Key Largo
Marathon
 Board President
 Key Largo
 Key Largo
Key Largo
 Board President
 Tavernier
 Tavernier
Key Largo
 Board President
 Key Largo
 Tavernier
 Islamorada
 Key Largo
 Tavernier
Key Largo
 Board President
 Islamorada
 Islamorada
 Marathon

In 1976, FKEC Board President **Joy Fegrous** was recognized by the National Rural Electric Cooperative Association (NRECA) for being the only female president of more than 17,000 co-ops in the nation. Complimenting her grasp of the subject of electric co-op work and her ability to think on her feet, the NRECA also invited her to join their management and training programs that year to represent women members in electric cooperatives.

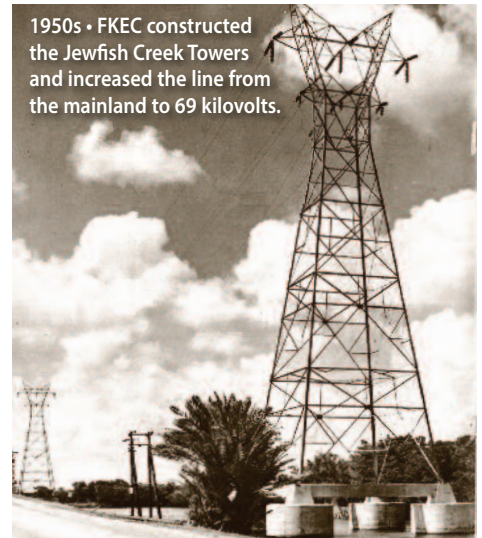




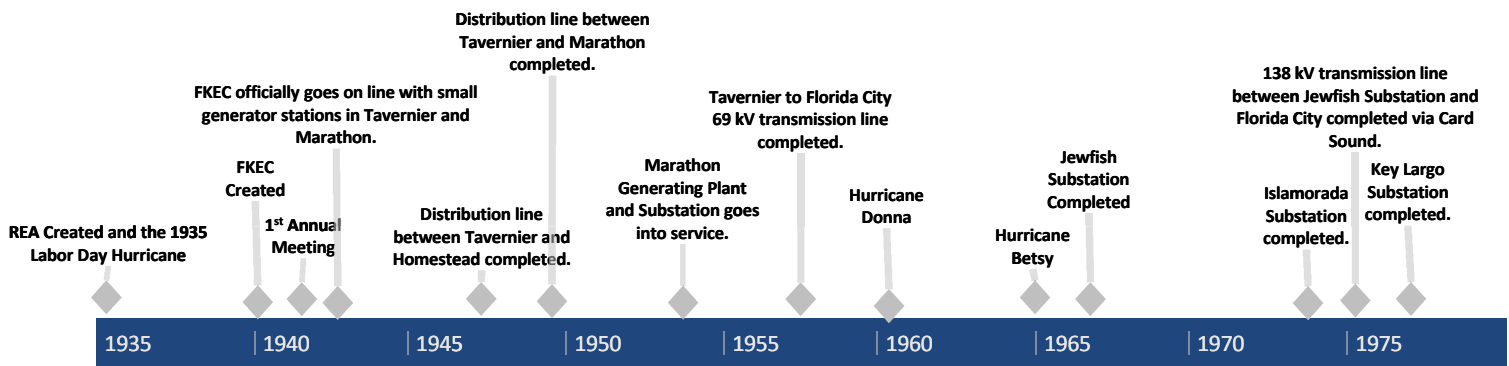
CHAPTER VI



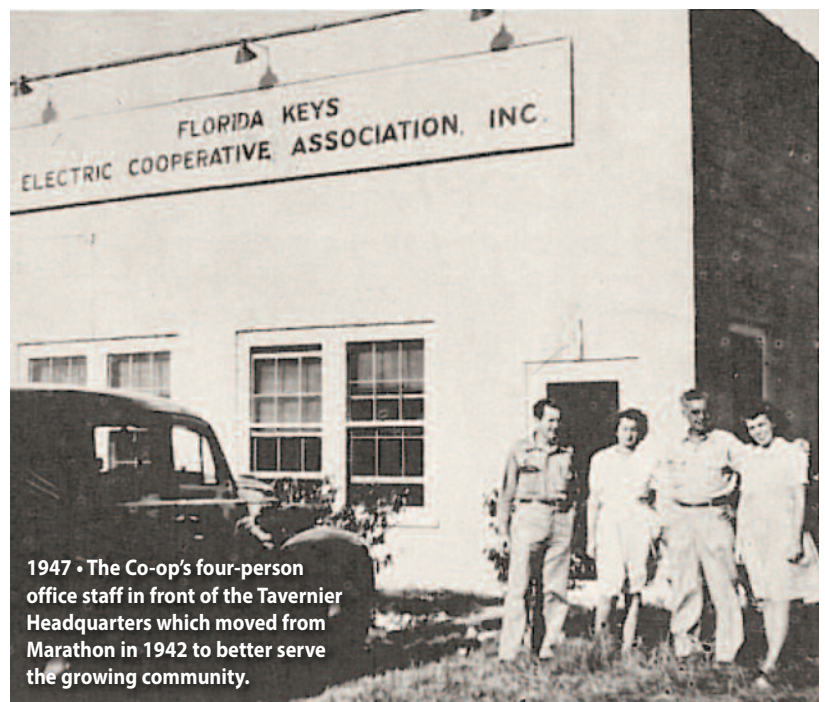
1949 • FKEC Annual Meeting



1950s • FKEC constructed the Jewfish Creek Towers and increased the line from the mainland to 69 kilovolts.

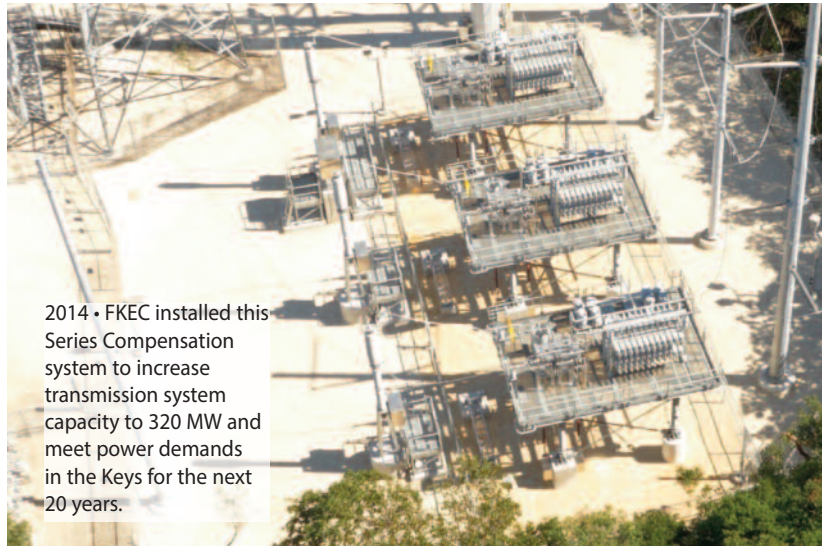
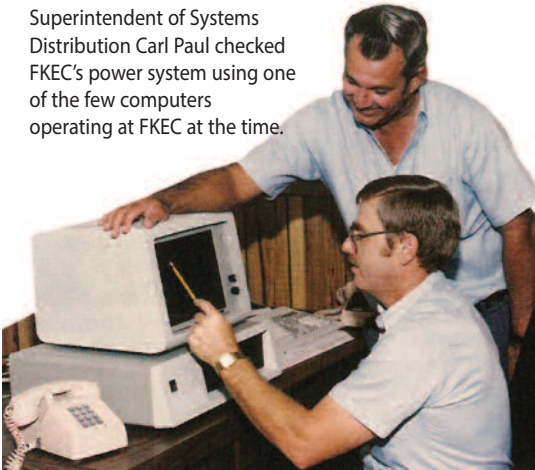


1957 • FKEC drilled holes underwater to place the first transmission poles to deliver power from the mainland.

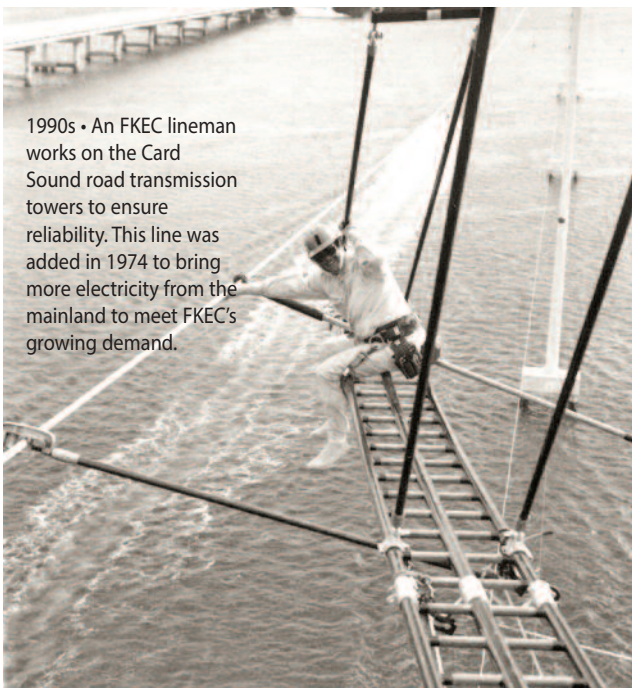
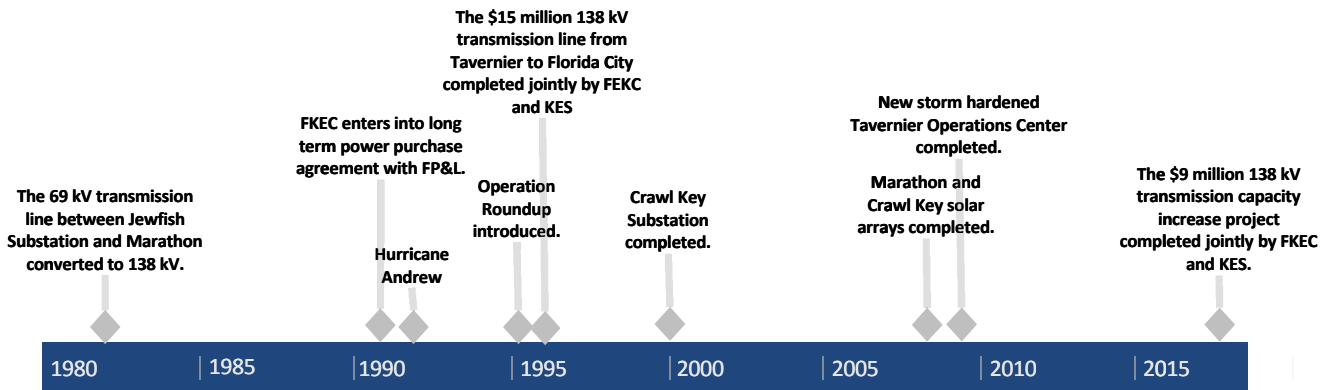


1947 • The Co-op's four-person office staff in front of the Tavernier Headquarters which moved from Marathon in 1942 to better serve the growing community.

1989 • Then Superintendent of Transmission Tim Planer and Superintendent of Systems Distribution Carl Paul checked FKEC's power system using one of the few computers operating at FKEC at the time.



2014 • FKEC installed this Series Compensation system to increase transmission system capacity to 320 MW and meet power demands in the Keys for the next 20 years.



1990s • An FKEC lineman works on the Card Sound road transmission towers to ensure reliability. This line was added in 1974 to bring more electricity from the mainland to meet FKEC's growing demand.



2008 • FKEC installed the first grid-connected solar array in the Florida Keys. The Marathon array, located next to the Marathon office building, consists of 552 separate 175-watt solar modules with a capacity of 96.6 kilowatts. The smaller array inside FKEC's Crawl Key Substation adds another 21 kilowatts.

